

Product Datasheet

S1P1/EDG-1 Antibody (JM10-66)

NBP2-67129

Unit Size: 100 ul

Store at 4C short term. Aliquot and store at -20C long term. Avoid freeze-thaw cycles.

www.novusbio.com



technical@novusbio.com

Protocols, Publications, Related Products, Reviews, Research Tools and Images at:
www.novusbio.com/NBP2-67129

Updated 9/9/2025 v.20.1

Earn rewards for product
reviews and publications.

Submit a publication at www.novusbio.com/publications

Submit a review at www.novusbio.com/reviews/destination/NBP2-67129



NBP2-67129

S1P1/EDG-1 Antibody (JM10-66)

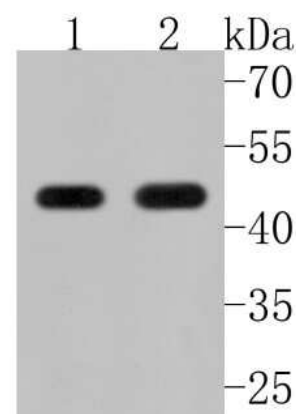
Product Information	
Unit Size	100 ul
Concentration	1 mg/ml
Storage	Store at 4C short term. Aliquot and store at -20C long term. Avoid freeze-thaw cycles.
Clonality	Monoclonal
Clone	JM10-66
Preservative	0.05% Sodium Azide
Isotype	IgG
Purity	Protein A purified
Buffer	TBS (pH7.4), 0.05% BSA, 40% Glycerol

Product Description	
Description	Novus Biologicals Rabbit S1P1/EDG-1 Antibody (JM10-66) (NBP2-67129) is a recombinant monoclonal antibody validated for use in IHC, WB, Flow and ICC/IF. All Novus Biologicals antibodies are covered by our 100% guarantee.
Host	Rabbit
Gene ID	1901
Gene Symbol	S1PR1
Species	Human, Mouse, Rat
Immunogen	Synthetic peptide within Human S1P1/EDG-1 aa 2-51 / 382. (SwissProt: P21453 Human; SwissProt: O08530 Mouse; SwissProt: P48303 Rat)

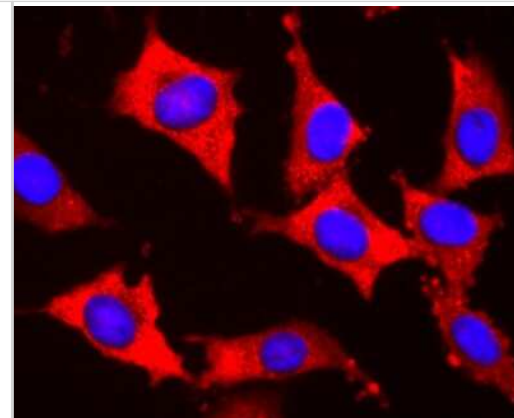
Product Application Details	
Applications	Western Blot, Immunohistochemistry-Paraffin, Flow Cytometry, Immunocytochemistry/ Immunofluorescence, Immunohistochemistry
Recommended Dilutions	Western Blot 1:500-1:2000, Flow Cytometry 1:50-1:100, Immunohistochemistry, Immunocytochemistry/ Immunofluorescence 1:100-1:500, Immunohistochemistry-Paraffin 1:50-1:200

Images

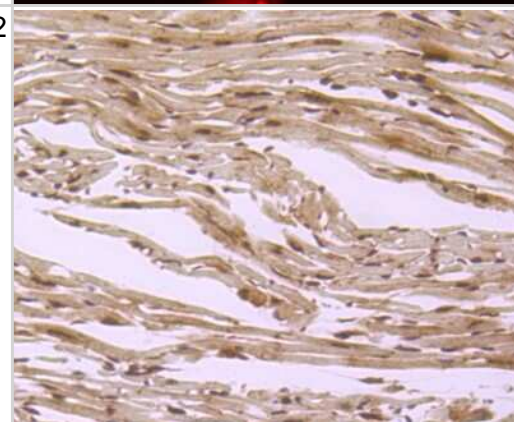
Western Blot: S1P1/EDG-1 Antibody (JM10-66) [NBP2-67129] - Western blot analysis of S1P1/EDG-1 on different lysates. Proteins were transferred to a PVDF membrane and blocked with 5% BSA in PBS for 1 hour at room temperature. The primary antibody (1/500) was used in 5% BSA at room temperature for 2 hours. Goat Anti-Rabbit IgG - HRP Secondary Antibody (HA1001) at 1:5,000 dilution was used for 1 hour at room temperature. Positive control: Lane 1: SH-SY5Y cell lysate Lane 2: HepG2 cell lysate



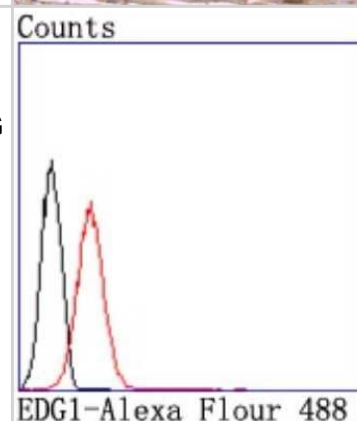
Immunocytochemistry/Immunofluorescence: S1P1/EDG-1 Antibody (JM10-66) [NBP2-67129] - Staining EDG1 in SH-SY5Y cells (red). The nuclear counter stain is DAPI (blue). Cells were fixed in paraformaldehyde, permeabilised with 0.25% Triton X100/PBS.



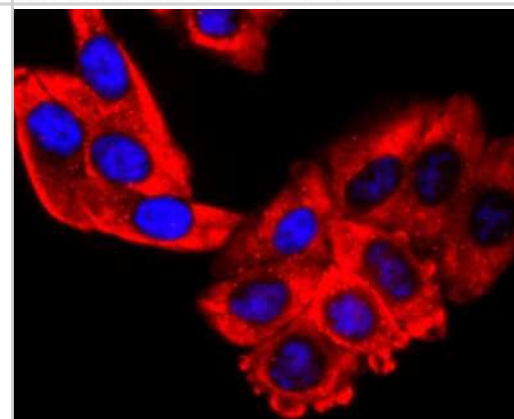
Immunohistochemistry-Paraffin: S1P1/EDG-1 Antibody (JM10-66) [NBP2-67129] - Analysis of paraffin-embedded mouse heart tissue using anti-EDG1 antibody. Counter stained with hematoxylin.



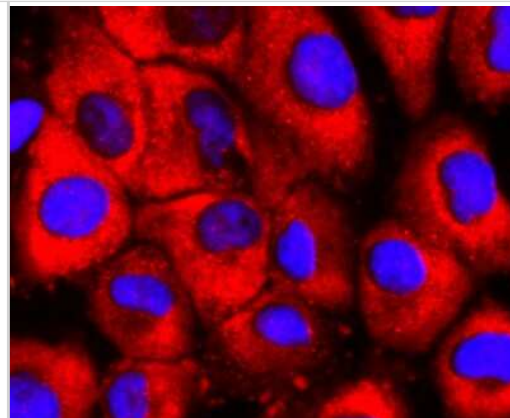
Flow Cytometry: S1P1/EDG-1 Antibody (JM10-66) [NBP2-67129] - Analysis of Jurkat cells with EDG1 antibody at 1/50 dilution (red) compared with an unlabelled control (cells without incubation with primary antibody; black). Alexa Fluor 488-conjugated goat anti rabbit IgG was used as the secondary antibody.



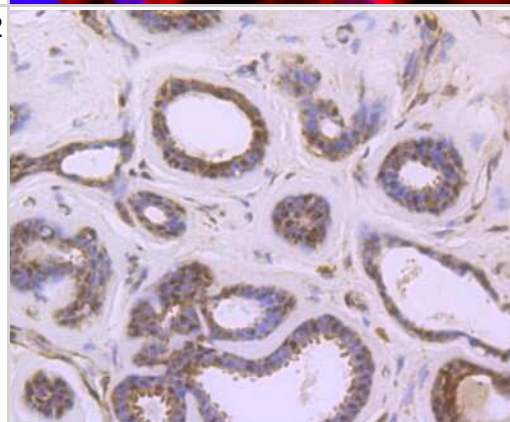
Immunocytochemistry/Immunofluorescence: S1P1/EDG-1 Antibody (JM10-66) [NBP2-67129] - Staining EDG1 in HepG2 cells (red). The nuclear counter stain is DAPI (blue). Cells were fixed in paraformaldehyde, permeabilised with 0.25% Triton X100/PBS.



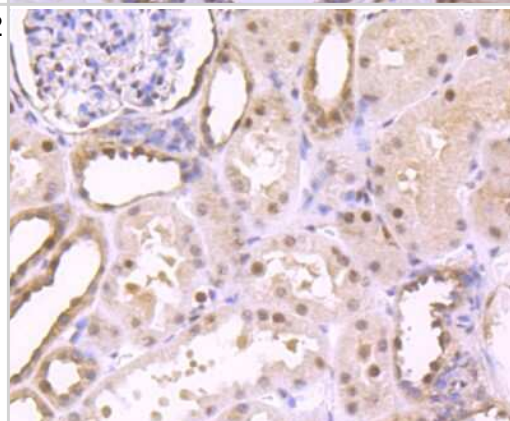
Immunocytochemistry/Immunofluorescence: S1P1/EDG-1 Antibody (JM10-66) [NBP2-67129] - Staining EDG1 in HUVEC cells (red). The nuclear counter stain is DAPI (blue). Cells were fixed in paraformaldehyde, permeabilised with 0.25% Triton X100/PBS.



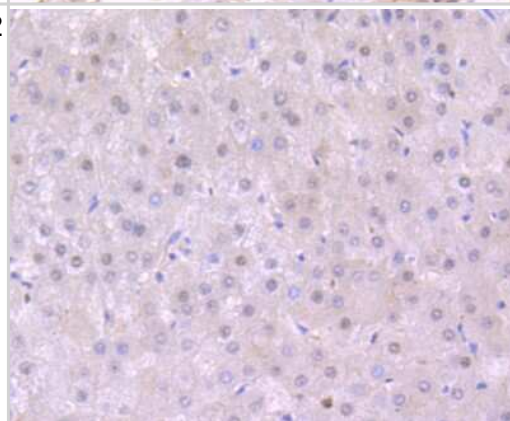
Immunohistochemistry-Paraffin: S1P1/EDG-1 Antibody (JM10-66) [NBP2-67129] - Analysis of paraffin-embedded human breast carcinoma tissue using anti-EDG1 antibody. Counter stained with hematoxylin.



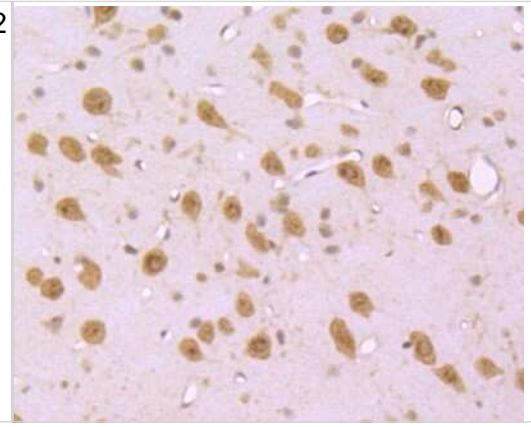
Immunohistochemistry-Paraffin: S1P1/EDG-1 Antibody (JM10-66) [NBP2-67129] - Analysis of paraffin-embedded human kidney tissue using anti-EDG1 antibody. Counter stained with hematoxylin.



Immunohistochemistry-Paraffin: S1P1/EDG-1 Antibody (JM10-66) [NBP2-67129] - Analysis of paraffin-embedded human liver tissue using anti-EDG1 antibody. Counter stained with hematoxylin.



Immunohistochemistry-Paraffin: S1P1/EDG-1 Antibody (JM10-66) [NBP2-67129] - Analysis of paraffin-embedded mouse brain tissue using anti-EDG1 antibody. Counter stained with hematoxylin.





Novus Biologicals USA

10730 E. Briarwood Avenue
Centennial, CO 80112
USA
Phone: 303.730.1950
Toll Free: 1.888.506.6887
Fax: 303.730.1966
nb-customerservice@bio-techne.com

Bio-Techne Canada

21 Canmotor Ave
Toronto, ON M8Z 4E6
Canada
Phone: 905.827.6400
Toll Free: 855.668.8722
Fax: 905.827.6402
canada.inquires@bio-techne.com

Bio-Techne Ltd

19 Barton Lane
Abingdon Science Park
Abingdon, OX14 3NB, United Kingdom
Phone: (44) (0) 1235 529449
Free Phone: 0800 37 34 15
Fax: (44) (0) 1235 533420
info.EMEA@bio-techne.com

General Contact Information

www.novusbio.com
Technical Support: nb-technical@bio-techne.com
Orders: nb-customerservice@bio-techne.com
General: novus@novusbio.com

Products Related to NBP2-67129

HAF008	Goat anti-Rabbit IgG Secondary Antibody [HRP]
NB7160	Goat anti-Rabbit IgG (H+L) Secondary Antibody [HRP]
NBP2-24891	Rabbit IgG Isotype Control
H00001901-Q01-10ug	Recombinant Human S1P1/EDG-1 GST (N-Term) Protein

Limitations

This product is for research use only and is not approved for use in humans or in clinical diagnosis. Primary Antibodies are guaranteed for 1 year from date of receipt.

For more information on our 100% guarantee, please visit www.novusbio.com/guarantee

Earn gift cards/discounts by submitting a review: www.novusbio.com/reviews/submit/NBP2-67129

Earn gift cards/discounts by submitting a publication using this product:
www.novusbio.com/publications

