

Product Datasheet

PLGF Antibody (JA63-15) NBP2-67067

Unit Size: 100 ul

Store at 4C short term. Aliquot and store at -20C long term. Avoid freeze-thaw cycles.

www.novusbio.com



technical@novusbio.com

Publications: 3

Protocols, Publications, Related Products, Reviews, Research Tools and Images at:
www.novusbio.com/NBP2-67067

Updated 9/9/2025 v.20.1

Earn rewards for product
reviews and publications.

Submit a publication at www.novusbio.com/publications

Submit a review at www.novusbio.com/reviews/destination/NBP2-67067



NBP2-67067

PLGF Antibody (JA63-15)

Product Information

Unit Size	100 ul
Concentration	1 mg/ml
Storage	Store at 4C short term. Aliquot and store at -20C long term. Avoid freeze-thaw cycles.
Clonality	Monoclonal
Clone	JA63-15
Preservative	0.05% Sodium Azide
Isotype	IgG
Purity	Protein A purified
Buffer	TBS (pH7.4), 0.05% BSA, 40% Glycerol

Product Description

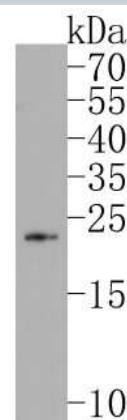
Description	Novus Biologicals Rabbit PLGF Antibody (JA63-15) (NBP2-67067) is a recombinant monoclonal antibody validated for use in IHC, WB and ICC/IF. Anti-PLGF Antibody: Cited in 3 publications. All Novus Biologicals antibodies are covered by our 100% guarantee.
Host	Rabbit
Gene ID	5228
Gene Symbol	PGF
Species	Human, Mouse, Rat
Immunogen	Synthetic peptide within Human PLGF aa 48-97 / 221. (SwissProt: P49763 Human; SwissProt: P49764 Mouse; SwissProt: Q63434 Rat)

Product Application Details

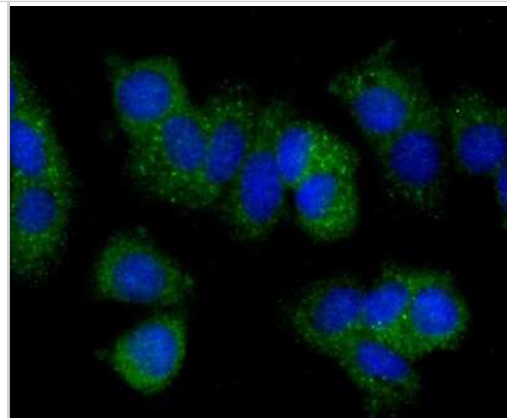
Applications	Western Blot, Immunohistochemistry-Paraffin, Immunocytochemistry/Immunofluorescence, Immunohistochemistry
Recommended Dilutions	Western Blot 1:500-1:1000, Immunohistochemistry, Immunocytochemistry/Immunofluorescence 1:50-1:200, Immunohistochemistry-Paraffin 1:50-1:200

Images

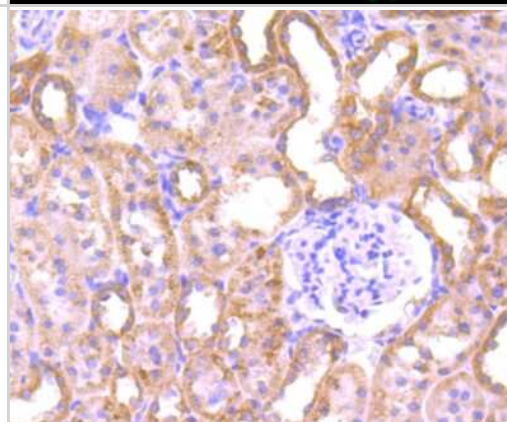
Western Blot: PLGF Antibody (JA63-15) [NBP2-67067] - Western blot analysis of PLGF on JAR cell lysates. Proteins were transferred to a PVDF membrane and blocked with 5% BSA in PBS for 1 hour at room temperature. The primary antibody (1/500) was used in 5% BSA at room temperature for 2 hours. Goat Anti-Rabbit IgG - HRP Secondary Antibody (HA1001) at 1:200,000 dilution was used for 1 hour at room temperature.



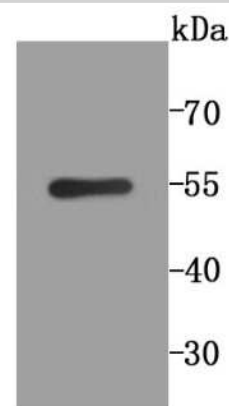
Immunocytochemistry/Immunofluorescence: PLGF Antibody (JA63-15) [NBP2-67067] - Staining PLGF in MCF-7 cells (green). The nuclear counter stain is DAPI (blue). Cells were fixed in paraformaldehyde, permeabilised with 0.25% Triton X100/PBS.



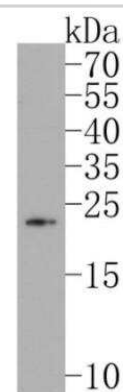
Immunohistochemistry-Paraffin: PLGF Antibody (JA63-15) [NBP2-67067] - Analysis of paraffin-embedded rat kidney tissue using anti-PLGF antibody. Counter stained with hematoxylin.



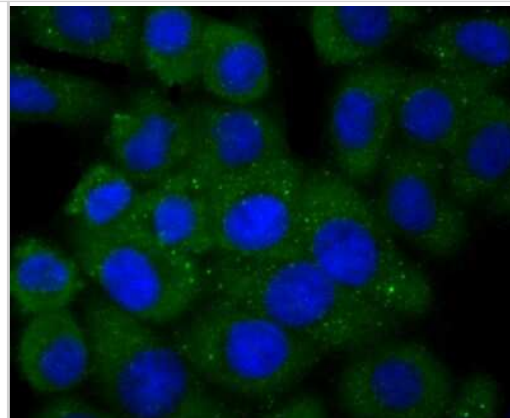
Western Blot: PLGF Antibody (JA63-15) [NBP2-67067] - Analysis of PLGF on SH-SY5Y cell lysate using anti-PLGF antibody at 1/1,000 dilution.



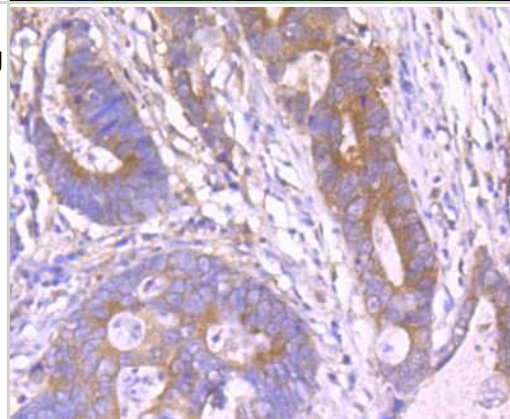
Western Blot: PLGF Antibody (JA63-15) [NBP2-67067] - Analysis of PLGF on JAR cell lysates. Proteins were transferred to a PVDF membrane and blocked with 5% BSA in PBS for 1 hour at room temperature. The primary antibody (1/500) was used in 5% BSA at room temperature for 2 hours. Goat Anti-Rabbit IgG - HRP Secondary Antibody at 1:200,000 dilution was used for 1 hour at room temperature.



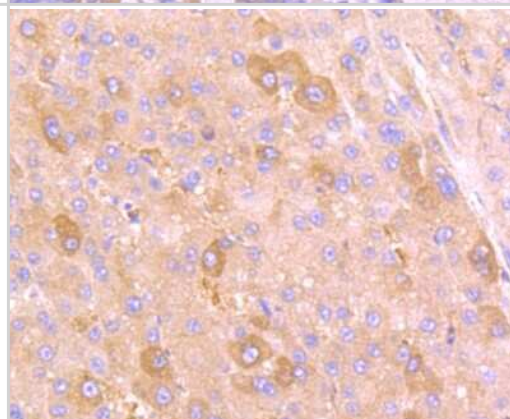
Immunocytochemistry/Immunofluorescence: PLGF Antibody (JA63-15) [NBP2-67067] - Staining PLGF in HepG2 cells (green). The nuclear counter stain is DAPI (blue). Cells were fixed in paraformaldehyde, permeabilised with 0.25% Triton X100/PBS.



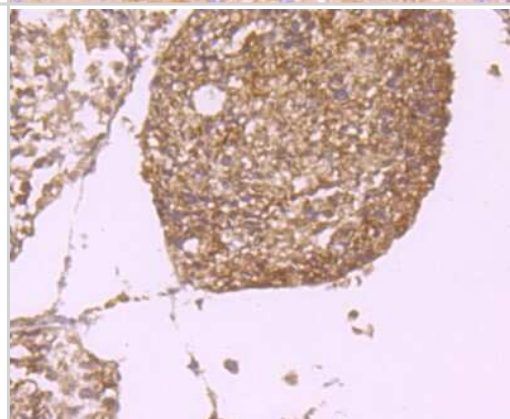
Immunohistochemistry-Paraffin: PLGF Antibody (JA63-15) [NBP2-67067] - Analysis of paraffin-embedded human colon cancer tissue using anti-PLGF antibody. Counter stained with hematoxylin.



Immunohistochemistry-Paraffin: PLGF Antibody (JA63-15) [NBP2-67067] - Analysis of paraffin-embedded human liver cancer tissue using anti-PLGF antibody. Counter stained with hematoxylin.



Immunohistochemistry-Paraffin: PLGF Antibody (JA63-15) [NBP2-67067] - Analysis of paraffin-embedded mouse orchis tissue using anti-PLGF antibody. Counter stained with hematoxylin.



Publications

Tatar M, Uslu S, Öner J Expression of placental growth factor and a disintegrin and metalloprotease with a thrombospondin type motifs 1-4-8 during the three trimesters of rat pregnancy at the maternal-fetal interface *Anatomia, histologia, embryologia* 2023-07-09 [PMID: 37424113]

Tatar M, Tufekci KK, Uslu S, Oner J Expression of ADAMTS 1-4-8 and placental growth factor in ovary and oviduct during pregnancy in the first trimester *Anatomia, histologia, embryologia* 2023-04-04 [PMID: 37014320]

Lennikov A, Mukwaya A, Fan L et al. Synergistic interactions of PIGF and VEGF contribute to blood-retinal barrier breakdown through canonical NF kappa B activation *Experimental Cell Research* 2020-10-01 [PMID: 33130176]





Novus Biologicals USA

10730 E. Briarwood Avenue
Centennial, CO 80112
USA
Phone: 303.730.1950
Toll Free: 1.888.506.6887
Fax: 303.730.1966
nb-customerservice@bio-techne.com

Bio-Techne Canada

21 Canmotor Ave
Toronto, ON M8Z 4E6
Canada
Phone: 905.827.6400
Toll Free: 855.668.8722
Fax: 905.827.6402
canada.inquires@bio-techne.com

Bio-Techne Ltd

19 Barton Lane
Abingdon Science Park
Abingdon, OX14 3NB, United Kingdom
Phone: (44) (0) 1235 529449
Free Phone: 0800 37 34 15
Fax: (44) (0) 1235 533420
info.EMEA@bio-techne.com

General Contact Information

www.novusbio.com
Technical Support: nb-technical@bio-techne.com
Orders: nb-customerservice@bio-techne.com
General: novus@novusbio.com

Products Related to NBP2-67067

HAF008	Goat anti-Rabbit IgG Secondary Antibody [HRP]
NB7160	Goat anti-Rabbit IgG (H+L) Secondary Antibody [HRP]
NBP2-24891	Rabbit IgG Isotype Control
NBP2-61317-5ug	Recombinant Human PLGF Protein

Limitations

This product is for research use only and is not approved for use in humans or in clinical diagnosis. Primary Antibodies are guaranteed for 1 year from date of receipt.

For more information on our 100% guarantee, please visit www.novusbio.com/guarantee

Earn gift cards/discounts by submitting a review: www.novusbio.com/reviews/submit/NBP2-67067

Earn gift cards/discounts by submitting a publication using this product:
www.novusbio.com/publications

