

# Product Datasheet

## Myosin heavy chain 11 Antibody (JA03-35) NBP2-66967

Unit Size: 100 ul

Store at 4C short term. Aliquot and store at -20C long term. Avoid freeze-thaw cycles.

[www.novusbio.com](http://www.novusbio.com)



[technical@novusbio.com](mailto:technical@novusbio.com)

### Publications: 2

Protocols, Publications, Related Products, Reviews, Research Tools and Images at:  
[www.novusbio.com/NBP2-66967](http://www.novusbio.com/NBP2-66967)

Updated 10/23/2024 v.20.1

Earn rewards for product  
reviews and publications.

Submit a publication at [www.novusbio.com/publications](http://www.novusbio.com/publications)

Submit a review at [www.novusbio.com/reviews/destination/NBP2-66967](http://www.novusbio.com/reviews/destination/NBP2-66967)



**NBP2-66967**

Myosin heavy chain 11 Antibody (JA03-35)

**Product Information**

<b>Unit Size</b>	100 ul
<b>Concentration</b>	1 mg/ml
<b>Storage</b>	Store at 4C short term. Aliquot and store at -20C long term. Avoid freeze-thaw cycles.
<b>Clonality</b>	Monoclonal
<b>Clone</b>	JA03-35
<b>Preservative</b>	0.05% Sodium Azide
<b>Isotype</b>	IgG
<b>Purity</b>	Protein A purified
<b>Buffer</b>	TBS (pH7.4), 0.05% BSA, 40% Glycerol

**Product Description**

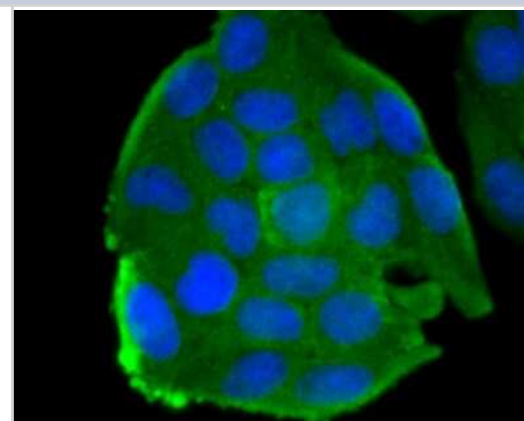
<b>Host</b>	Rabbit
<b>Gene ID</b>	4629
<b>Gene Symbol</b>	MYH11
<b>Species</b>	Human, Mouse, Rat
<b>Reactivity Notes</b>	Use in Mouse reported in scientific literature (PMID:34411694).
<b>Immunogen</b>	Synthetic peptide within human smooth muscle Myosin heavy chain 11 aa 1935-1972/1972. (SwissProt: P35749 Human; SwissProt: Q63862 Rat)

**Product Application Details**

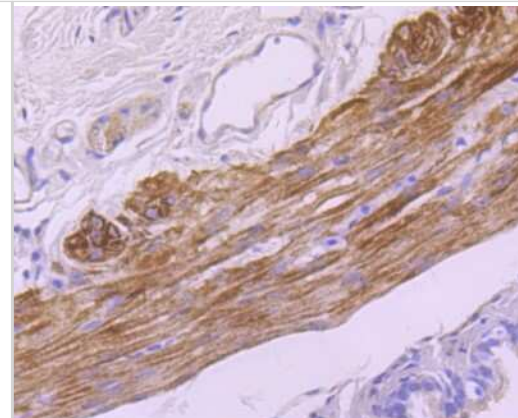
<b>Applications</b>	Western Blot, Immunocytochemistry/ Immunofluorescence, Immunohistochemistry, Immunohistochemistry-Paraffin
<b>Recommended Dilutions</b>	Western Blot 1:500, Immunohistochemistry, Immunocytochemistry/ Immunofluorescence 1:50-1:200, Immunohistochemistry-Paraffin 1:50-1:200

**Images**

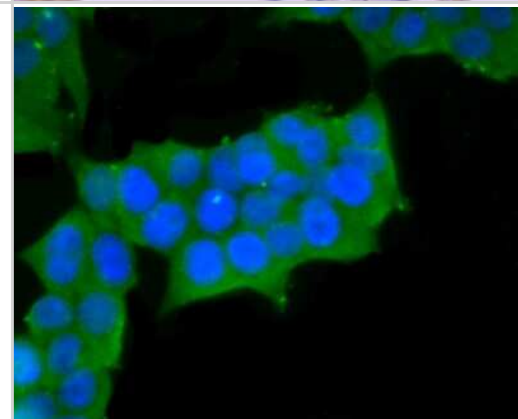
Immunocytochemistry/Immunofluorescence: Myosin heavy chain 11 Antibody (JA03-35) [NBP2-66967] - Staining smooth muscle Myosin heavy chain 11 in Hela cells (green). The nuclear counter stain is DAPI (blue). Cells were fixed in paraformaldehyde, permeabilised with 0.25% Triton X100/PBS.



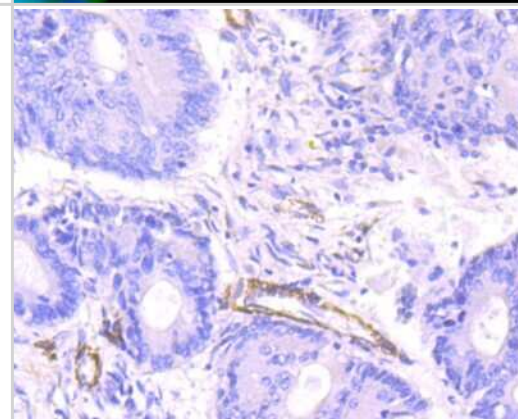
Immunohistochemistry-Paraffin: Myosin heavy chain 11 Antibody (JA03-35) [NBP2-66967] - Analysis of paraffin-embedded rat trachea tissue using anti-smooth muscle Myosin heavy chain 11 antibody. Counter stained with hematoxylin.



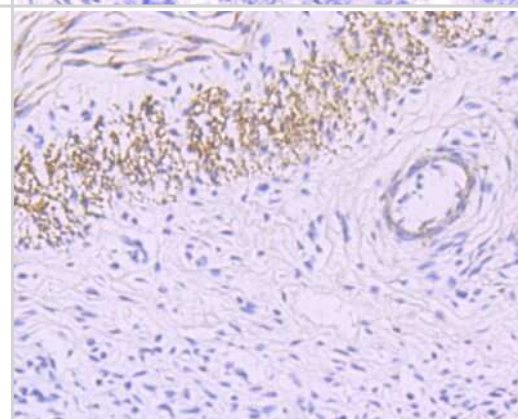
Immunocytochemistry/Immunofluorescence: Myosin heavy chain 11 Antibody (JA03-35) [NBP2-66967] - Staining smooth muscle Myosin heavy chain 11 in 293T cells (green). The nuclear counter stain is DAPI (blue). Cells were fixed in paraformaldehyde, permeabilised with 0.25% Triton X100/PBS.



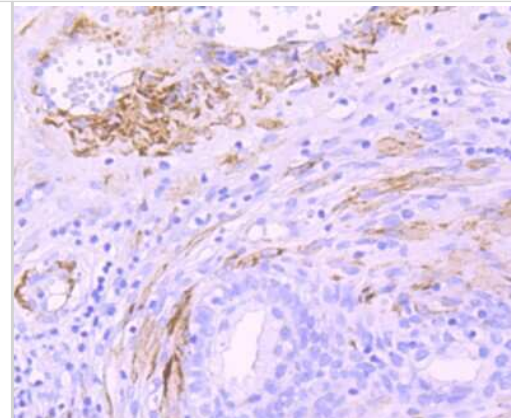
Immunohistochemistry-Paraffin: Myosin heavy chain 11 Antibody (JA03-35) [NBP2-66967] - Analysis of paraffin-embedded human colon tissue using anti-smooth muscle Myosin heavy chain 11 antibody. Counter stained with hematoxylin.



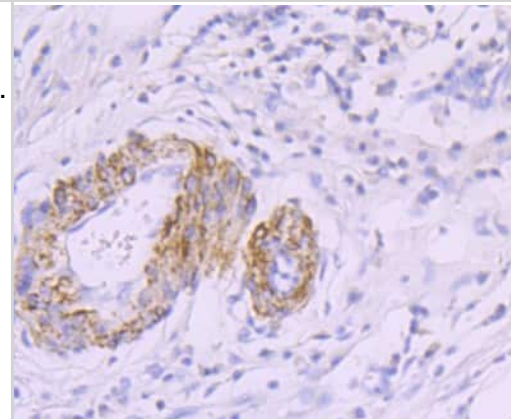
Immunohistochemistry-Paraffin: Myosin heavy chain 11 Antibody (JA03-35) [NBP2-66967] - Analysis of paraffin-embedded human jejunum tissue using anti-smooth muscle Myosin heavy chain 11 antibody. Counter stained with hematoxylin.



Immunohistochemistry-Paraffin: Myosin heavy chain 11 Antibody (JA03-35) [NBP2-66967] - Analysis of paraffin-embedded human prostate tissue using anti-smooth muscle Myosin heavy chain 11 antibody. Counter stained with hematoxylin.



Immunohistochemistry-Paraffin: Myosin heavy chain 11 Antibody (JA03-35) [NBP2-66967] - Analysis of paraffin-embedded human stomach cancer tissue using anti-smooth muscle Myosin heavy chain 11 antibody. Counter stained with hematoxylin.



## Publications

Lin CJ, Mecham RP Tissue-specific smooth muscle cell subtypes identified by transcriptional profiling The international journal of biochemistry & cell biology 2021-08-16 [PMID: 34411694] (ICC/IF, Mouse)

Lin CJ, Staiculescu MC, Hawes JZ et al. Heterogeneous Cellular Contributions to Elastic Laminae Formation in Arterial Wall Development Circ. Res. 2019-10-08 [PMID: 31590613]



### **Novus Biologicals USA**

10730 E. Briarwood Avenue  
Centennial, CO 80112  
USA  
Phone: 303.730.1950  
Toll Free: 1.888.506.6887  
Fax: 303.730.1966  
nb-customerservice@bio-techne.com

### **Bio-Techne Canada**

21 Canmotor Ave  
Toronto, ON M8Z 4E6  
Canada  
Phone: 905.827.6400  
Toll Free: 855.668.8722  
Fax: 905.827.6402  
canada.inquires@bio-techne.com

### **Bio-Techne Ltd**

19 Barton Lane  
Abingdon Science Park  
Abingdon, OX14 3NB, United Kingdom  
Phone: (44) (0) 1235 529449  
Free Phone: 0800 37 34 15  
Fax: (44) (0) 1235 533420  
info.EMEA@bio-techne.com

### **General Contact Information**

www.novusbio.com  
Technical Support: nb-technical@bio-techne.com  
Orders: nb-customerservice@bio-techne.com  
General: novus@novusbio.com

### **Products Related to NBP2-66967**

---

HAF008	Goat anti-Rabbit IgG Secondary Antibody [HRP]
NB7160	Goat anti-Rabbit IgG (H+L) Secondary Antibody [HRP]
NBP2-24891	Rabbit IgG Isotype Control
NBP1-87025PEP	Myosin heavy chain 11 Recombinant Protein Antigen

---

### **Limitations**

This product is for research use only and is not approved for use in humans or in clinical diagnosis. Primary Antibodies are guaranteed for 1 year from date of receipt.

For more information on our 100% guarantee, please visit [www.novusbio.com/guarantee](http://www.novusbio.com/guarantee)

Earn gift cards/discounts by submitting a review: [www.novusbio.com/reviews/submit/NBP2-66967](http://www.novusbio.com/reviews/submit/NBP2-66967)

Earn gift cards/discounts by submitting a publication using this product:  
[www.novusbio.com/publications](http://www.novusbio.com/publications)

