

Product Datasheet

Mitofusin 1 Antibody (JF0954)

NBP2-66952

Unit Size: 100 ul

Store at 4C short term. Aliquot and store at -20C long term. Avoid freeze-thaw cycles.

www.novusbio.com



technical@novusbio.com

Protocols, Publications, Related Products, Reviews, Research Tools and Images at:
www.novusbio.com/NBP2-66952

Updated 1/3/2023 v.20.1

Earn rewards for product
reviews and publications.

Submit a publication at www.novusbio.com/publications

Submit a review at www.novusbio.com/reviews/destination/NBP2-66952



NBP2-66952

Mitofusin 1 Antibody (JF0954)

Product Information

| | |
|----------------------|--|
| Unit Size | 100 ul |
| Concentration | 1 mg/ml |
| Storage | Store at 4C short term. Aliquot and store at -20C long term. Avoid freeze-thaw cycles. |
| Clonality | Monoclonal |
| Clone | JF0954 |
| Preservative | 0.05% Sodium Azide |
| Isotype | IgG |
| Purity | Protein A purified |
| Buffer | TBS (pH7.4), 0.05% BSA, 40% Glycerol |

Product Description

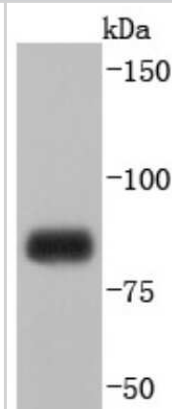
| | |
|--------------------|--|
| Host | Rabbit |
| Gene Symbol | MFN1 |
| Species | Human |
| Immunogen | Recombinant protein within Human Mitofusin 1 aa 491-620 / 741. (SwissProt: Q8IWA4 Human) |

Product Application Details

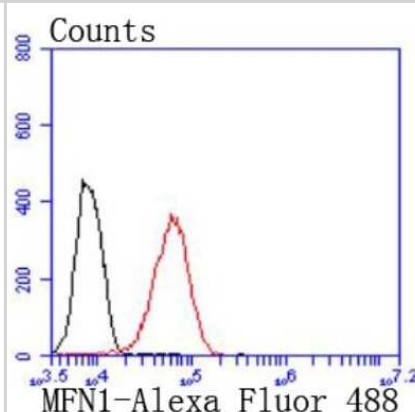
| | |
|------------------------------|--|
| Applications | Western Blot, Flow Cytometry, Immunoprecipitation |
| Recommended Dilutions | Western Blot 1:1000-1:2000, Flow Cytometry 1:50-1:100, Immunoprecipitation |

Images

Western Blot: Mitofusin 1 Antibody (JF0954) [NBP2-66952] - Analysis of Mitofusin 1 on K562 cells lysates using anti-Mitofusin 1 antibody at 1/1,000 dilution.



Flow Cytometry: Mitofusin 1 Antibody (JF0954) [NBP2-66952] - Analysis of 293 cells with Mitofusin 1 antibody at 1/50 dilution (red) compared with an unlabelled control (cells without incubation with primary antibody; black). Alexa Fluor 488-conjugated goat anti rabbit IgG was used as the secondary antibody





Novus Biologicals USA

10730 E. Briarwood Avenue
Centennial, CO 80112
USA

Phone: 303.730.1950

Toll Free: 1.888.506.6887

Fax: 303.730.1966

nb-customerservice@bio-techne.com

Bio-Techne Canada

21 Canmotor Ave
Toronto, ON M8Z 4E6
Canada

Phone: 905.827.6400

Toll Free: 855.668.8722

Fax: 905.827.6402

canada.inquires@bio-techne.com

Bio-Techne Ltd

19 Barton Lane
Abingdon Science Park
Abingdon, OX14 3NB, United Kingdom

Phone: (44) (0) 1235 529449

Free Phone: 0800 37 34 15

Fax: (44) (0) 1235 533420

info.EMEA@bio-techne.com

General Contact Information

www.novusbio.com

Technical Support: nb-technical@bio-techne.com

Orders: nb-customerservice@bio-techne.com

General: novus@novusbio.com

Limitations

This product is for research use only and is not approved for use in humans or in clinical diagnosis. Primary Antibodies are guaranteed for 1 year from date of receipt.

For more information on our 100% guarantee, please visit www.novusbio.com/guarantee

Earn gift cards/discounts by submitting a review: www.novusbio.com/reviews/submit/NBP2-66952

Earn gift cards/discounts by submitting a publication using this product:

www.novusbio.com/publications

