

# Product Datasheet

## Leptin R Antibody (JA73-01)

### NBP2-66931

Unit Size: 100 ul

Store at 4C short term. Aliquot and store at -20C long term. Avoid freeze-thaw cycles.

[www.novusbio.com](http://www.novusbio.com)



[technical@novusbio.com](mailto:technical@novusbio.com)

Protocols, Publications, Related Products, Reviews, Research Tools and Images at:  
[www.novusbio.com/NBP2-66931](http://www.novusbio.com/NBP2-66931)

Updated 10/23/2024 v.20.1

Earn rewards for product  
reviews and publications.

Submit a publication at [www.novusbio.com/publications](http://www.novusbio.com/publications)

Submit a review at [www.novusbio.com/reviews/destination/NBP2-66931](http://www.novusbio.com/reviews/destination/NBP2-66931)



**NBP2-66931**

Leptin R Antibody (JA73-01)

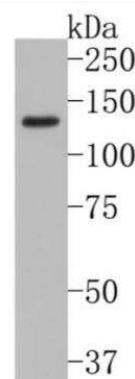
| Product Information |                                                                                        |
|---------------------|----------------------------------------------------------------------------------------|
| Unit Size           | 100 ul                                                                                 |
| Concentration       | 1 mg/ml                                                                                |
| Storage             | Store at 4C short term. Aliquot and store at -20C long term. Avoid freeze-thaw cycles. |
| Clonality           | Monoclonal                                                                             |
| Clone               | JA73-01                                                                                |
| Preservative        | 0.05% Sodium Azide                                                                     |
| Isotype             | IgG                                                                                    |
| Purity              | Protein A purified                                                                     |
| Buffer              | TBS (pH7.4), 0.05% BSA, 40% Glycerol                                                   |

| Product Description |                                                                                                                                        |
|---------------------|----------------------------------------------------------------------------------------------------------------------------------------|
| Host                | Rabbit                                                                                                                                 |
| Gene ID             | 3953                                                                                                                                   |
| Gene Symbol         | LEPR                                                                                                                                   |
| Species             | Human, Mouse, Rat                                                                                                                      |
| Immunogen           | Synthetic peptide within Human Leptin R aa 1041-1090 / 1165. (SwissProt: P48357 Human; SwissProt: P48356 Mouse; SwissProt: Q62959 Rat) |

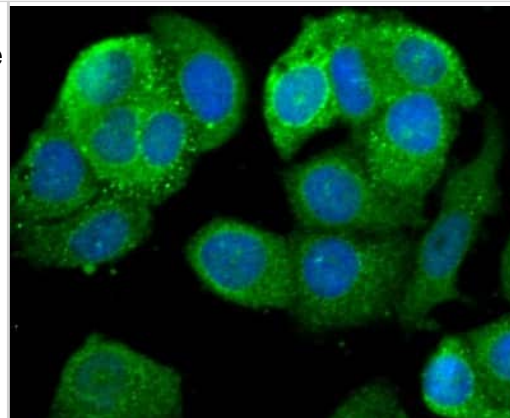
| Product Application Details |                                                                                                                                                                                         |
|-----------------------------|-----------------------------------------------------------------------------------------------------------------------------------------------------------------------------------------|
| Applications                | Western Blot, Flow Cytometry, Immunocytochemistry/ Immunofluorescence, Immunohistochemistry, Immunohistochemistry-Paraffin                                                              |
| Recommended Dilutions       | Western Blot 1:500-1:2000, Flow Cytometry 1:50-1:100, Immunohistochemistry 1:50-1:1,000, Immunocytochemistry/ Immunofluorescence 1:50-1:100, Immunohistochemistry-Paraffin 1:50-1:1,000 |

**Images**

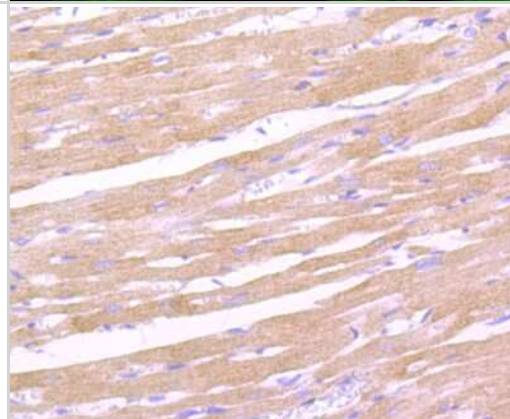
Western Blot: Leptin R Antibody (JA73-01) [NBP2-66931] - Analysis of Leptin Receptor on HepG2 cell lysates. Proteins were transferred to a PVDF membrane and blocked with 5% BSA in PBS for 1 hour at room temperature. The primary antibody ( 1/500) was used in 5% BSA at room temperature for 2 hours. Goat Anti-Rabbit IgG - HRP Secondary Antibody at 1:200,000 dilution was used for 1 hour at room temperature.



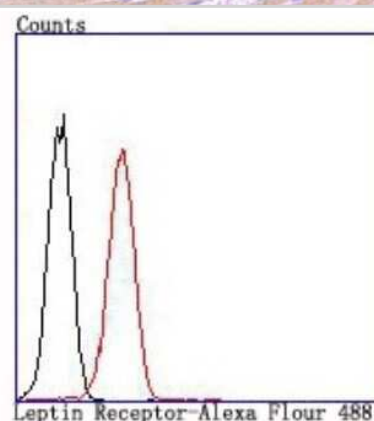
**Immunocytochemistry/Immunofluorescence:** Leptin R Antibody (JA73-01) [NBP2-66931] - Staining Leptin Receptor in MCF-7 cells (green). The nuclear counter stain is DAPI (blue). Cells were fixed in paraformaldehyde, permeabilised with 0.25% Triton X100/PBS.



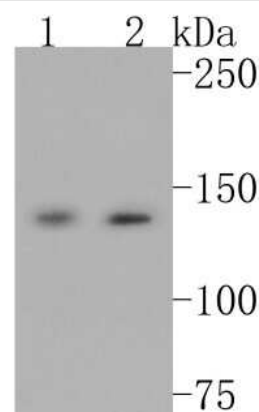
**Immunohistochemistry-Paraffin:** Leptin R Antibody (JA73-01) [NBP2-66931] - Analysis of paraffin-embedded rat heart tissue using anti-Leptin Receptor antibody. Counter stained with hematoxylin.



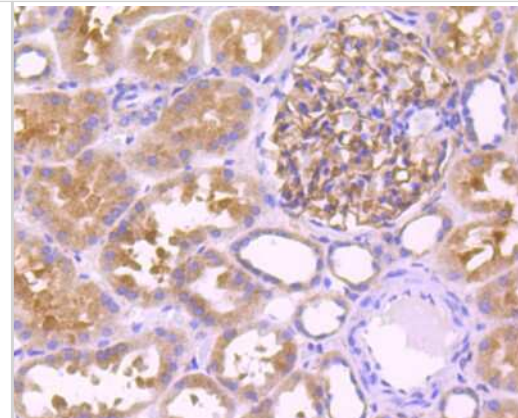
**Flow Cytometry:** Leptin R Antibody (JA73-01) [NBP2-66931] - Analysis of K562 cells with Leptin Receptor antibody at 1/100 dilution (red) compared with an unlabelled control (cells without incubation with primary antibody; black).



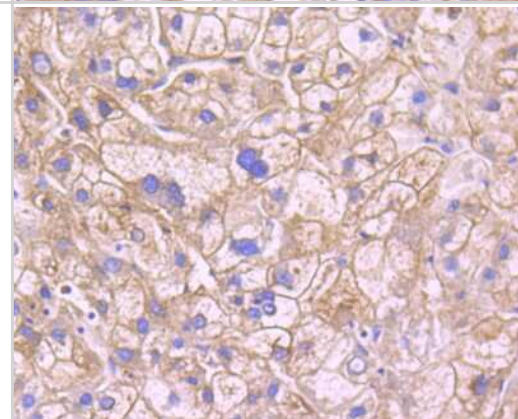
**Western Blot:** Leptin R Antibody (JA73-01) [NBP2-66931] - Western blot analysis of Leptin R on different lysates. Proteins were transferred to a PVDF membrane and blocked with 5% BSA in PBS for 1 hour at room temperature. The primary antibody (1/500) was used in 5% BSA at room temperature for 2 hours. Goat Anti-Rabbit IgG - HRP Secondary Antibody (HA1001) at 1:5,000 dilution was used for 1 hour at room temperature. Positive control: Lane 1: mouse lung tissue lysate Lane 2: mouse liver tissue lysate



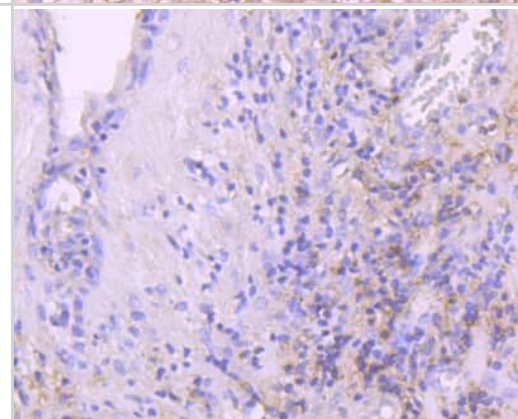
Immunohistochemistry-Paraffin: Leptin R Antibody (JA73-01) [NBP2-66931] - Analysis of paraffin-embedded human kidney tissue using anti-Leptin Receptor antibody. Counter stained with hematoxylin.



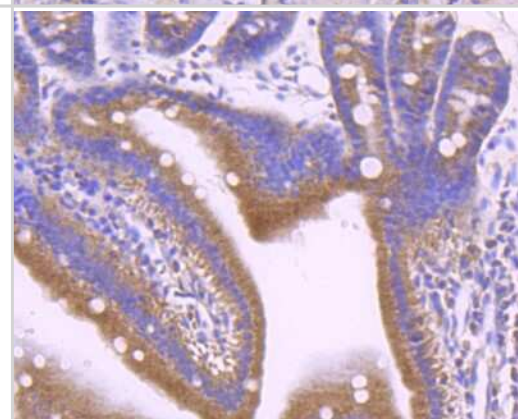
Immunohistochemistry-Paraffin: Leptin R Antibody (JA73-01) [NBP2-66931] - Analysis of paraffin-embedded human liver cancer tissue using anti-Leptin Receptor antibody. Counter stained with hematoxylin.



Immunohistochemistry-Paraffin: Leptin R Antibody (JA73-01) [NBP2-66931] - Analysis of paraffin-embedded human prostate tissue using anti-Leptin Receptor antibody. Counter stained with hematoxylin.



Immunohistochemistry-Paraffin: Leptin R Antibody (JA73-01) [NBP2-66931] - Analysis of paraffin-embedded mouse small intestine tissue using anti-Leptin Receptor antibody. Counter stained with hematoxylin.





### **Novus Biologicals USA**

10730 E. Briarwood Avenue  
Centennial, CO 80112  
USA  
Phone: 303.730.1950  
Toll Free: 1.888.506.6887  
Fax: 303.730.1966  
nb-customerservice@bio-techne.com

### **Bio-Techne Canada**

21 Canmotor Ave  
Toronto, ON M8Z 4E6  
Canada  
Phone: 905.827.6400  
Toll Free: 855.668.8722  
Fax: 905.827.6402  
canada.inquires@bio-techne.com

### **Bio-Techne Ltd**

19 Barton Lane  
Abingdon Science Park  
Abingdon, OX14 3NB, United Kingdom  
Phone: (44) (0) 1235 529449  
Free Phone: 0800 37 34 15  
Fax: (44) (0) 1235 533420  
info.EMEA@bio-techne.com

### **General Contact Information**

[www.novusbio.com](http://www.novusbio.com)  
Technical Support: nb-technical@bio-techne.com  
Orders: nb-customerservice@bio-techne.com  
General: novus@novusbio.com

### **Products Related to NBP2-66931**

---

|               |                                                     |
|---------------|-----------------------------------------------------|
| HAF008        | Goat anti-Rabbit IgG Secondary Antibody [HRP]       |
| NB7160        | Goat anti-Rabbit IgG (H+L) Secondary Antibody [HRP] |
| NBP2-24891    | Rabbit IgG Isotype Control                          |
| NBP1-85765PEP | Leptin R Recombinant Protein Antigen                |

---

### **Limitations**

This product is for research use only and is not approved for use in humans or in clinical diagnosis. Primary Antibodies are guaranteed for 1 year from date of receipt.

For more information on our 100% guarantee, please visit [www.novusbio.com/guarantee](http://www.novusbio.com/guarantee)

Earn gift cards/discounts by submitting a review: [www.novusbio.com/reviews/submit/NBP2-66931](http://www.novusbio.com/reviews/submit/NBP2-66931)

Earn gift cards/discounts by submitting a publication using this product:  
[www.novusbio.com/publications](http://www.novusbio.com/publications)

