

Product Datasheet

gamma Tubulin Antibody (JF0972) NBP2-66860

Unit Size: 100 ul

Store at 4C short term. Aliquot and store at -20C long term. Avoid freeze-thaw cycles.

www.novusbio.com



technical@novusbio.com

Protocols, Publications, Related Products, Reviews, Research Tools and Images at:
www.novusbio.com/NBP2-66860

Updated 1/3/2023 v.20.1

**Earn rewards for product
reviews and publications.**

Submit a publication at www.novusbio.com/publications

Submit a review at www.novusbio.com/reviews/destination/NBP2-66860



NBP2-66860

gamma Tubulin Antibody (JF0972)

Product Information

Unit Size	100 ul
Concentration	1 mg/ml
Storage	Store at 4C short term. Aliquot and store at -20C long term. Avoid freeze-thaw cycles.
Clonality	Monoclonal
Clone	JF0972
Preservative	0.05% Sodium Azide
Isotype	IgG
Purity	Protein A purified
Buffer	TBS (pH7.4), 0.05% BSA, 40% Glycerol

Product Description

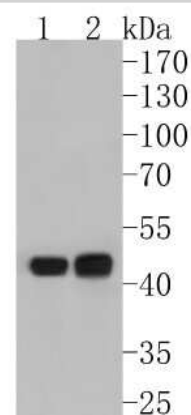
Host	Rabbit
Gene Symbol	TUBG1
Species	Human, Mouse, Rat, Amphibian, Bovine, Canine, Chicken, Fish, Hamster, Monkey, Xenopus
Immunogen	Recombinant protein within Human gamma Tubulin aa 227-407 / 451. (SwissProt: P23258 Human; SwissProt: Q9NRH3 Human; SwissProt: P83887 Mouse; SwissProt: Q8VCK3 Mouse; SwissProt: P83888 Rat; SwissProt: P23330 XenopusLaevis)

Product Application Details

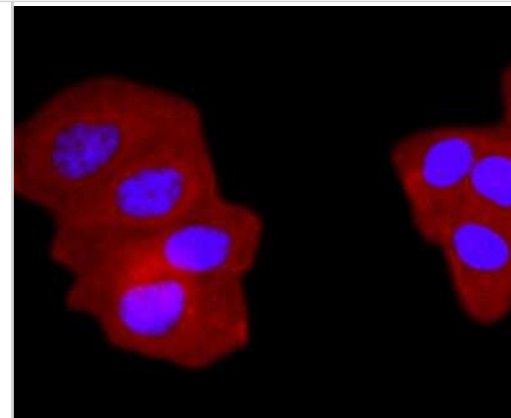
Applications	Western Blot, Flow Cytometry, Immunocytochemistry/ Immunofluorescence, Immunohistochemistry, Immunohistochemistry-Paraffin, Immunoprecipitation
Recommended Dilutions	Western Blot 1:500-1:2000, Flow Cytometry 1:50-1:100, Immunohistochemistry, Immunocytochemistry/ Immunofluorescence 1:50-1:200, Immunoprecipitation, Immunohistochemistry-Paraffin 1:50-1:200

Images

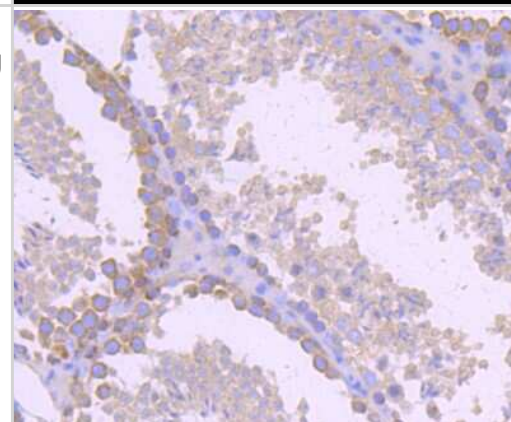
Western Blot: gamma Tubulin Antibody (JF0972) [NBP2-66860] - Western blot analysis of gamma Tubulin on different lysates. Proteins were transferred to a PVDF membrane and blocked with 5% BSA in PBS for 1 hour at room temperature. The primary antibody (1/500) was used in 5% BSA at room temperature for 2 hours. Goat Anti-Rabbit IgG - HRP Secondary Antibody (HA1001) at 1:5,000 dilution was used for 1 hour at room temperature. Positive control: Lane 1: Jurkat cell lysate Lane 2: A431 cell lysate



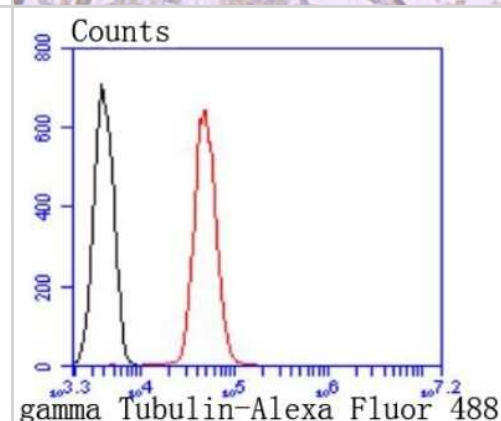
Immunocytochemistry/Immunofluorescence: gamma Tubulin Antibody (JF0972) [NBP2-66860] - Staining gamma Tubulin in MCF-7 cells (red). The nuclear counter stain is DAPI (blue). Cells were fixed in paraformaldehyde, permeabilised with 0.25% Triton X100/PBS.



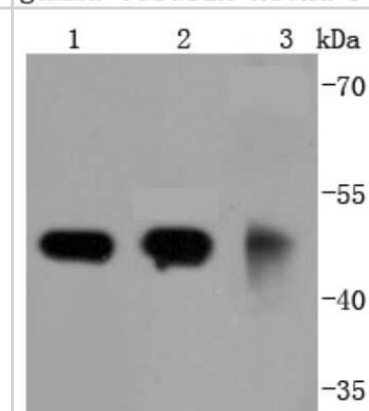
Immunohistochemistry-Paraffin: gamma Tubulin Antibody (JF0972) [NBP2-66860] - Analysis of paraffin-embedded mouse testis tissue using anti-gamma Tubulin antibody. Counter stained with hematoxylin.



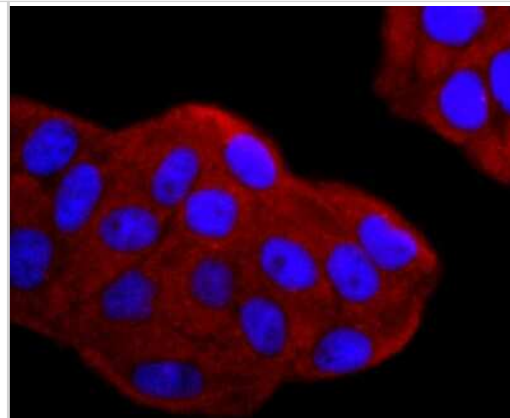
Flow Cytometry: gamma Tubulin Antibody (JF0972) [NBP2-66860] - Flow cytometric analysis of gamma Tubulin was done on Jurkat cells. The cells were fixed, permeabilized and stained with the primary antibody (1/50) (red). After incubation of the primary antibody at room temperature for an hour, the cells were stained with a Alexa Fluor 488-conjugated Goat anti-Rabbit IgG Secondary antibody at 1/1000 dilution for 30 minutes. Unlabeled sample was used as a control (cells without incubation with primary antibody; black).



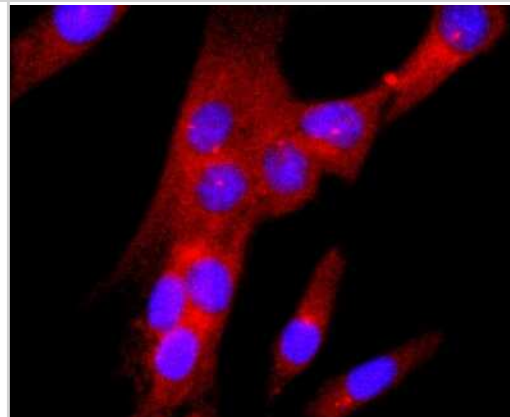
Western Blot: gamma Tubulin Antibody (JF0972) [NBP2-66860] - Analysis of gamma Tubulin on different lysates using anti-gamma Tubulin antibody at 1/1,000 dilution. Positive control: Lane 1: A431 Lane 2: Jurkat Lane 3: Mouse brain



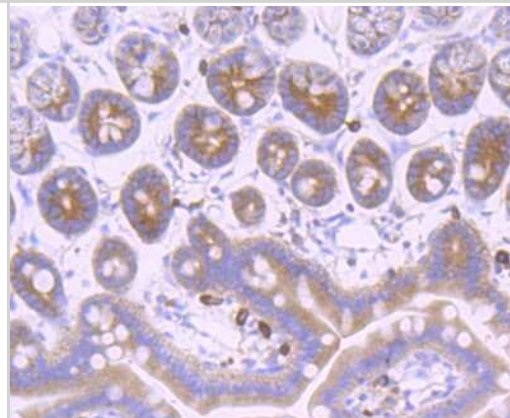
Immunocytochemistry/Immunofluorescence: gamma Tubulin Antibody (JF0972) [NBP2-66860] - Staining gamma Tubulin in Hela cells (red). The nuclear counter stain is DAPI (blue). Cells were fixed in paraformaldehyde, permeabilised with 0.25% Triton X100/PBS.



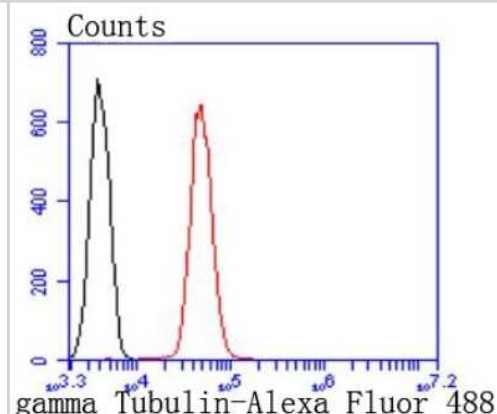
Immunocytochemistry/Immunofluorescence: gamma Tubulin Antibody (JF0972) [NBP2-66860] - Staining gamma Tubulin in SHG-44 cells (red). The nuclear counter stain is DAPI (blue). Cells were fixed in paraformaldehyde, permeabilised with 0.25% Triton X100/PBS.



Immunohistochemistry-Paraffin: gamma Tubulin Antibody (JF0972) [NBP2-66860] - Analysis of paraffin-embedded mouse colon tissue using anti-gamma Tubulin antibody. Counter stained with hematoxylin.



Flow Cytometry: gamma Tubulin Antibody (JF0972) [NBP2-66860] - Analysis of Jurkat cells with gamma Tubulin antibody at 1/50 dilution (red) compared with an unlabelled control (cells without incubation with primary antibody; black). Alexa Fluor 488-conjugated goat anti rabbit IgG was used as the secondary antibody.





Novus Biologicals USA

10730 E. Briarwood Avenue
Centennial, CO 80112
USA
Phone: 303.730.1950
Toll Free: 1.888.506.6887
Fax: 303.730.1966
nb-customerservice@bio-techne.com

Bio-Techne Canada

21 Canmotor Ave
Toronto, ON M8Z 4E6
Canada
Phone: 905.827.6400
Toll Free: 855.668.8722
Fax: 905.827.6402
canada.inquires@bio-techne.com

Bio-Techne Ltd

19 Barton Lane
Abingdon Science Park
Abingdon, OX14 3NB, United Kingdom
Phone: (44) (0) 1235 529449
Free Phone: 0800 37 34 15
Fax: (44) (0) 1235 533420
info.EMEA@bio-techne.com

General Contact Information

www.novusbio.com
Technical Support: nb-technical@bio-techne.com
Orders: nb-customerservice@bio-techne.com
General: novus@novusbio.com

Limitations

This product is for research use only and is not approved for use in humans or in clinical diagnosis. Primary Antibodies are guaranteed for 1 year from date of receipt.

For more information on our 100% guarantee, please visit www.novusbio.com/guarantee

Earn gift cards/discounts by submitting a review: www.novusbio.com/reviews/submit/NBP2-66860

Earn gift cards/discounts by submitting a publication using this product:
www.novusbio.com/publications

