

Product Datasheet

Ferritin Heavy Chain Antibody (JM22-36) NBP2-66835

Unit Size: 100 ul

Store at 4C short term. Aliquot and store at -20C long term. Avoid freeze-thaw cycles.

www.novusbio.com



technical@novusbio.com

Protocols, Publications, Related Products, Reviews, Research Tools and Images at:
www.novusbio.com/NBP2-66835

Updated 5/28/2024 v.20.1

Earn rewards for product
reviews and publications.

Submit a publication at www.novusbio.com/publications

Submit a review at www.novusbio.com/reviews/destination/NBP2-66835



NBP2-66835**Ferritin Heavy Chain Antibody (JM22-36)**

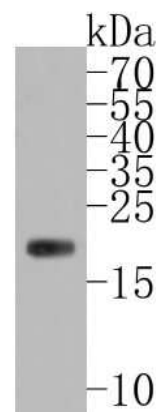
Product Information	
Unit Size	100 ul
Concentration	1 mg/ml
Storage	Store at 4C short term. Aliquot and store at -20C long term. Avoid freeze-thaw cycles.
Clonality	Monoclonal
Clone	JM22-36
Preservative	0.05% Sodium Azide
Isotype	IgG
Purity	Protein A purified
Buffer	TBS (pH7.4), 0.05% BSA, 40% Glycerol

Product Description	
Host	Rabbit
Gene ID	2495
Gene Symbol	FTH1
Species	Human, Mouse, Rat
Immunogen	Synthetic peptide within C-terminal human Ferritin Heavy Chain. (SwissProt: P02794 Human)

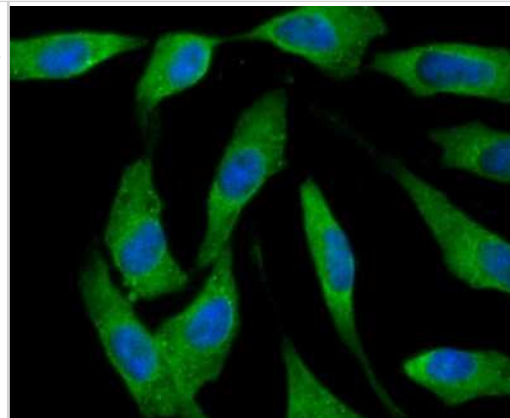
Product Application Details	
Applications	Western Blot, Immunocytochemistry/ Immunofluorescence, Immunohistochemistry, Immunohistochemistry-Paraffin
Recommended Dilutions	Western Blot 1:500-1:1000, Immunohistochemistry, Immunocytochemistry/ Immunofluorescence 1:50-1:200, Immunohistochemistry-Paraffin 1:50-1:200

Images

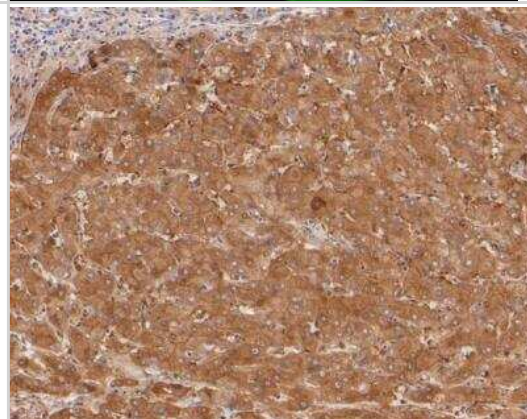
Western Blot: Ferritin Heavy Chain Antibody (JM22-36) [NBP2-66835] - Western blot analysis of Ferritin Heavy Chain on human liver tissue lysates. Proteins were transferred to a PVDF membrane and blocked with 5% BSA in PBS for 1 hour at room temperature. The primary antibody (1/500) was used in 5% BSA at room temperature for 2 hours. Goat Anti-Rabbit IgG - HRP Secondary Antibody (HA1001) at 1:5,000 dilution was used for 1 hour at room temperature.



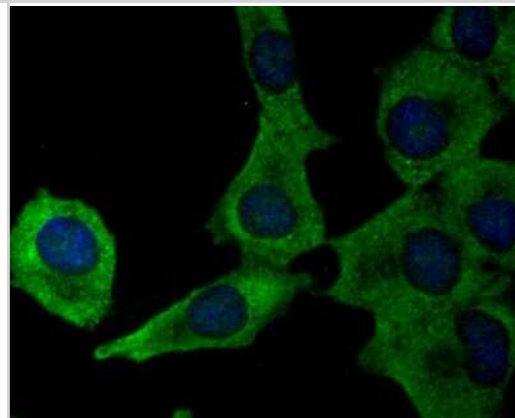
Immunocytochemistry/Immunofluorescence: Ferritin Heavy Chain Antibody (JM22-36) [NBP2-66835] - Staining Ferritin Heavy Chain in PC-3M cells (green). The nuclear counter stain is DAPI (blue). Cells were fixed in paraformaldehyde, permeabilised with 0.25% Triton X100/PBS.



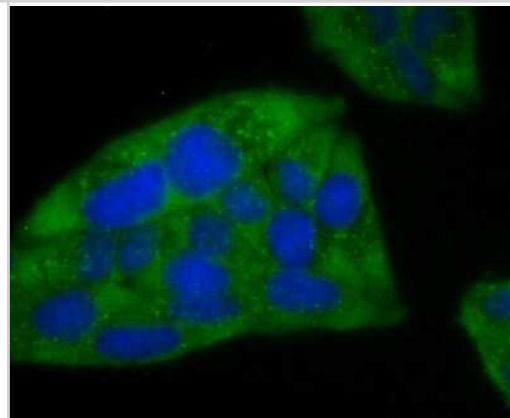
Immunohistochemistry-Paraffin: Ferritin Heavy Chain Antibody (JM22-36) [NBP2-66835] - Human liver tissue using anti-Ferritin Heavy Chain antibody. The section was pre-treated using heat mediated antigen retrieval with Tris-EDTA buffer (pH 8.0-8.4) for 20 minutes. The tissues were blocked in 5% BSA for 30 minutes at room temperature, washed with ddH₂O and PBS, and then probed with the primary antibody (1/50) for 30 minutes at room temperature. The detection was performed using an HRP conjugated compact polymer system. DAB was used as the chromogen. Tissues were counterstained with hematoxylin and mounted with DPX.



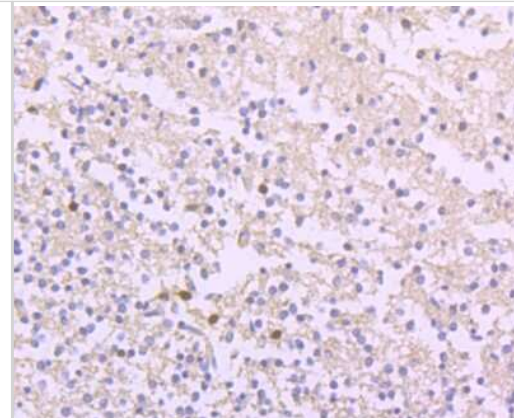
Immunocytochemistry/Immunofluorescence: Ferritin Heavy Chain Antibody (JM22-36) [NBP2-66835] - Staining Ferritin Heavy Chain in A549 cells (green). The nuclear counter stain is DAPI (blue). Cells were fixed in paraformaldehyde, permeabilised with 0.25% Triton X100/PBS.



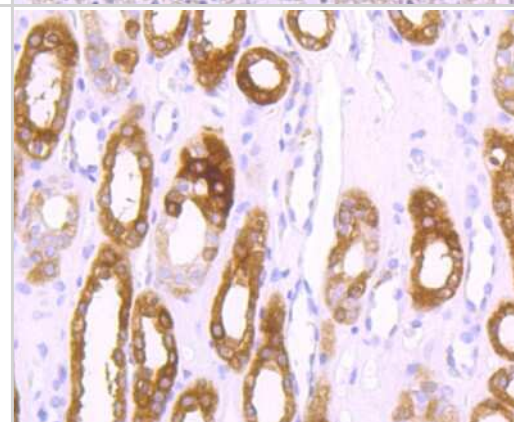
Immunocytochemistry/Immunofluorescence: Ferritin Heavy Chain Antibody (JM22-36) [NBP2-66835] - Staining Ferritin Heavy Chain in Hela cells (green). The nuclear counter stain is DAPI (blue). Cells were fixed in paraformaldehyde, permeabilised with 0.25% Triton



Immunohistochemistry-Paraffin: Ferritin Heavy Chain Antibody (JM22-36) [NBP2-66835] - Analysis of paraffin-embedded human brain tissue using anti-Ferritin Heavy Chain antibody. Counter stained with hematoxylin.



Immunohistochemistry-Paraffin: Ferritin Heavy Chain Antibody (JM22-36) [NBP2-66835] - Analysis of paraffin-embedded human kidney tissue using anti-Ferritin Heavy Chain antibody. Counter stained with hematoxylin.



Immunohistochemistry-Paraffin: Ferritin Heavy Chain Antibody (JM22-36) [NBP2-66835] - Analysis of paraffin-embedded human placenta tissue using anti-Ferritin Heavy Chain antibody. Counter stained with hematoxylin.





Novus Biologicals USA

10730 E. Briarwood Avenue
Centennial, CO 80112
USA
Phone: 303.730.1950
Toll Free: 1.888.506.6887
Fax: 303.730.1966
nb-customerservice@bio-techne.com

Bio-Techne Canada

21 Canmotor Ave
Toronto, ON M8Z 4E6
Canada
Phone: 905.827.6400
Toll Free: 855.668.8722
Fax: 905.827.6402
canada.inquires@bio-techne.com

Bio-Techne Ltd

19 Barton Lane
Abingdon Science Park
Abingdon, OX14 3NB, United Kingdom
Phone: (44) (0) 1235 529449
Free Phone: 0800 37 34 15
Fax: (44) (0) 1235 533420
info.EMEA@bio-techne.com

General Contact Information

www.novusbio.com
Technical Support: nb-technical@bio-techne.com
Orders: nb-customerservice@bio-techne.com
General: novus@novusbio.com

Limitations

This product is for research use only and is not approved for use in humans or in clinical diagnosis. Primary Antibodies are guaranteed for 1 year from date of receipt.

For more information on our 100% guarantee, please visit www.novusbio.com/guarantee

Earn gift cards/discounts by submitting a review: www.novusbio.com/reviews/submit/NBP2-66835

Earn gift cards/discounts by submitting a publication using this product:
www.novusbio.com/publications

