

Product Datasheet

eIF4E [p Ser209] Antibody (SU0396) NBP2-66802

Unit Size: 100 ul

Store at 4C short term. Aliquot and store at -20C long term. Avoid freeze-thaw cycles.

www.novusbio.com



technical@novusbio.com

Publications: 1

Protocols, Publications, Related Products, Reviews, Research Tools and Images at:
www.novusbio.com/NBP2-66802

Updated 1/3/2023 v.20.1

Earn rewards for product
reviews and publications.

Submit a publication at www.novusbio.com/publications

Submit a review at www.novusbio.com/reviews/destination/NBP2-66802



NBP2-66802

eIF4E [p Ser209] Antibody (SU0396)

Product Information

Unit Size	100 ul
Concentration	1 mg/ml
Storage	Store at 4C short term. Aliquot and store at -20C long term. Avoid freeze-thaw cycles.
Clonality	Monoclonal
Clone	SU0396
Preservative	0.05% Sodium Azide
Isotype	IgG
Purity	Protein A purified
Buffer	TBS (pH7.4), 0.05% BSA, 40% Glycerol

Product Description

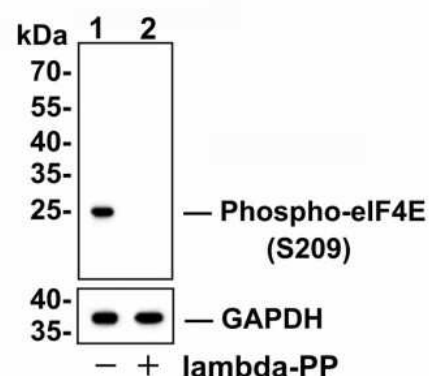
Host	Rabbit
Gene Symbol	EIF4E
Species	Human, Mouse, Rat
Immunogen	Synthetic phospho-peptide corresponding to residues surrounding Ser209 of human eIF4E. (SwissProt: P06730 Human; SwissProt: P63073 Mouse; SwissProt: P63074 Rat)

Product Application Details

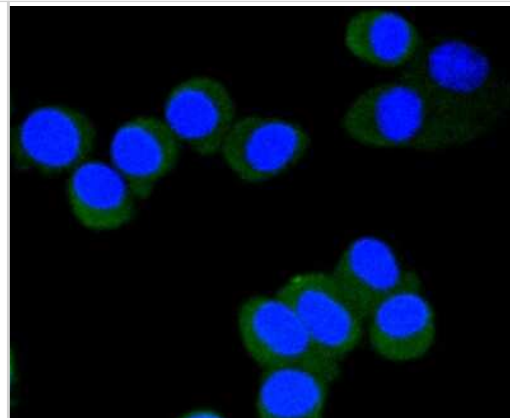
Applications	Western Blot, Immunocytochemistry/ Immunofluorescence, Immunohistochemistry, Immunohistochemistry-Paraffin, Immunoprecipitation
Recommended Dilutions	Western Blot 1:500-1:2000, Immunohistochemistry, Immunocytochemistry/ Immunofluorescence 1:50-1:200, Immunoprecipitation, Immunohistochemistry-Paraffin 1:50-1:200

Images

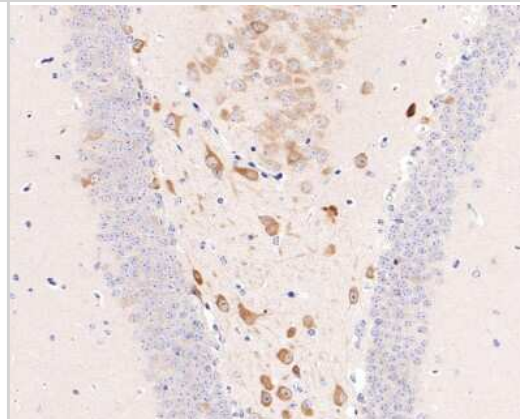
Western Blot: eIF4E [p Ser209] Antibody (SU0396) [NBP2-66802] - Analysis of eIF4E [p Ser209] on NIH-3T3 cell lysates. Lane 1: NIH-3T3 cells, whole cell lysate, 10 ug /lane. Lane 2: NIH-3T3 cells were treated with 2.8ug/ul lambda-PP for 30 minutes, whole cell lysates, 10 ug/lane. Proteins were transferred to a PVDF membrane and blocked with 5% BSA in PBS for 1 hour at room temperature. The primary antibody Anti-eIF4E [p Ser209] (1/500) and Anti-GAPDH antibody (1/10,000) was used in 5% BSA at room temperature for 2 hours. Goat Anti-Rabbit IgG H&L (HRP) Secondary Antibody at 1:200,000 dilution was used for 1 hour at room temperature. Predicted band size: 25 kDa Observed band size: 25 kDa Exposure time: 2 minutes 29 seconds



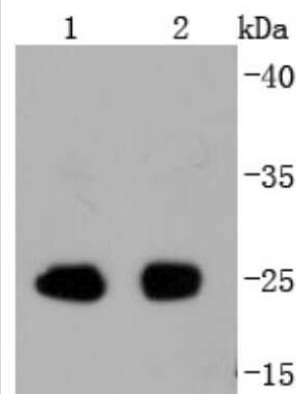
Immunocytochemistry/Immunofluorescence: eIF4E [p Ser209] Antibody (SU0396) [NBP2-66802] - Staining Phospho-eIF4E(S209) in N2A cells (green). The nuclear counter stain is DAPI (blue). Cells were fixed in paraformaldehyde, permeabilised with 0.25% Triton X100/PBS.



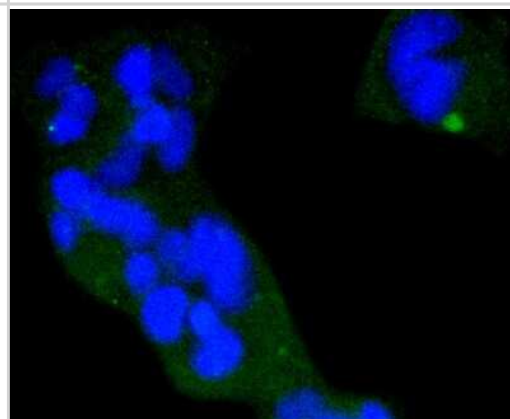
Immunohistochemistry-Paraffin: eIF4E [p Ser209] Antibody (SU0396) [NBP2-66802] - Analysis of paraffin-embedded mouse hippocampus tissue with Rabbit anti-Phospho-eIF4E (S209) antibody washed with ddH₂O and PBS, and then probed with the primary antibody at 1/200 dilution for 1 hour at room temperature. The detection was performed using an HRP conjugated compact polymer system. DAB was used as the chromogen. Tissues were counterstained with hematoxylin and mounted with DPX.



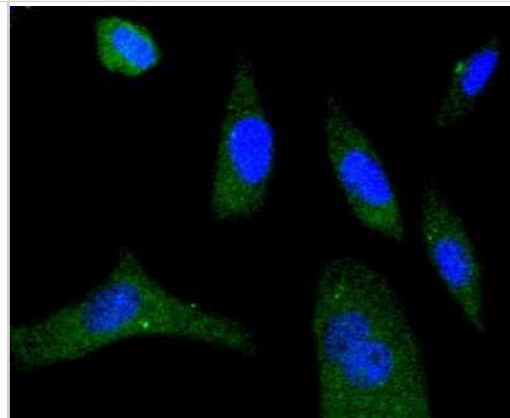
Western Blot: eIF4E [p Ser209] Antibody (SU0396) [NBP2-66802] - Analysis of Phospho-eIF4E(S209) on different lysates using anti-Phospho-eIF4E(S209) antibody at 1/1,000 dilution. Positive control: Lane 1: Mouse spleen Lane 2: Rat spleen



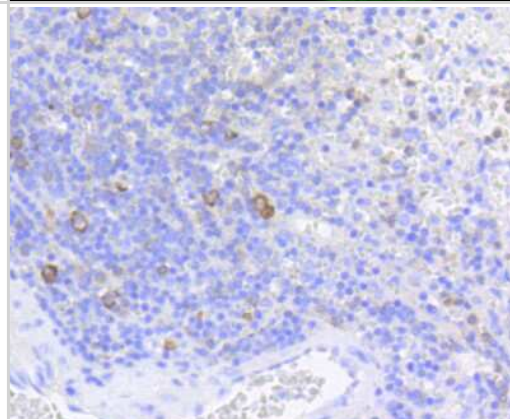
Immunocytochemistry/Immunofluorescence: eIF4E [p Ser209] Antibody (SU0396) [NBP2-66802] - Staining Phospho-eIF4E(S209) in 293 cells (green). The nuclear counter stain is DAPI (blue). Cells were fixed in paraformaldehyde, permeabilised with 0.25% Triton X100/PBS.



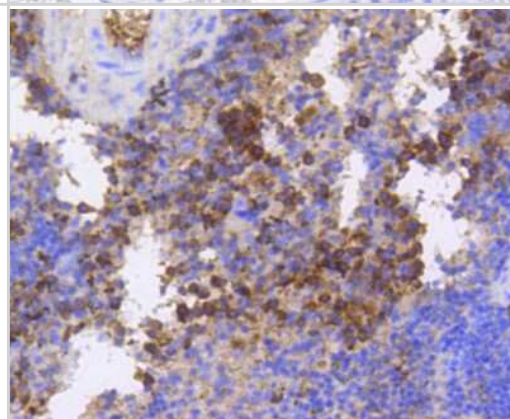
Immunocytochemistry/Immunofluorescence: eIF4E [p Ser209] Antibody (SU0396) [NBP2-66802] - Staining Phospho-eIF4E(S209) in SH-SY-5Y cells (green). The nuclear counter stain is DAPI (blue). Cells were fixed in paraformaldehyde, permeabilised with 0.25% Triton X100/PBS.



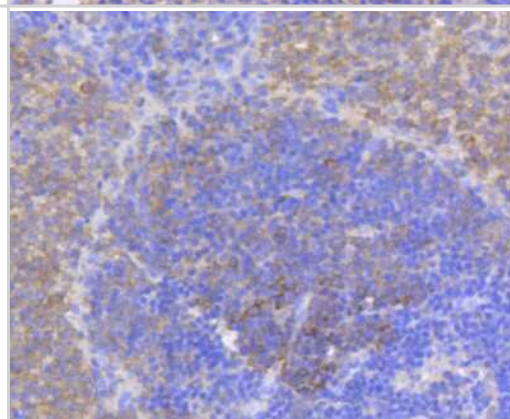
Immunohistochemistry-Paraffin: eIF4E [p Ser209] Antibody (SU0396) [NBP2-66802] - Analysis of paraffin-embedded human spleen tissue using anti-Phospho-eIF4E(S209) antibody. Counter stained with hematoxylin.



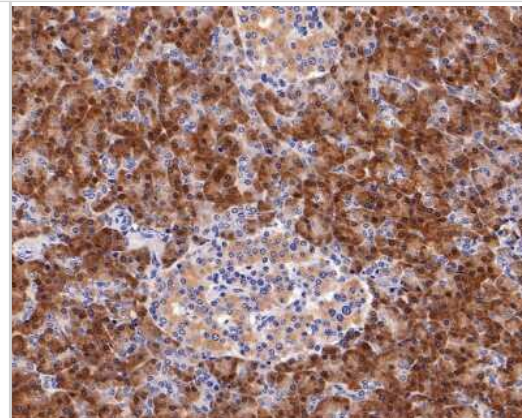
Immunohistochemistry-Paraffin: eIF4E [p Ser209] Antibody (SU0396) [NBP2-66802] - Analysis of paraffin-embedded mouse spleen tissue using anti-Phospho-eIF4E(S209) antibody. Counter stained with hematoxylin.



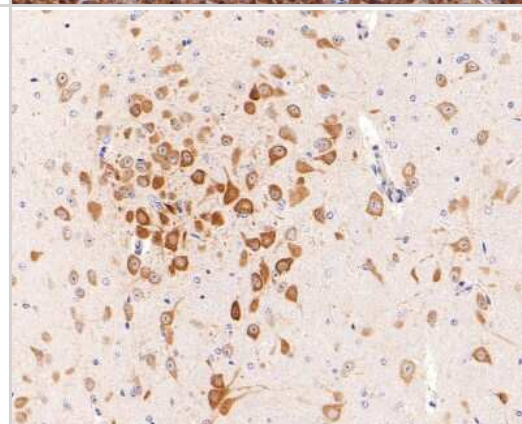
Immunohistochemistry-Paraffin: eIF4E [p Ser209] Antibody (SU0396) [NBP2-66802] - Analysis of paraffin-embedded rat spleen tissue using anti-Phospho-eIF4E(S209) antibody. Counter stained with hematoxylin.



Immunohistochemistry-Paraffin: eIF4E [p Ser209] Antibody (SU0396) [NBP2-66802] - Analysis of paraffin-embedded human pancreas tissue with Rabbit anti-Phospho-eIF4E (S209) antibody washed with ddH₂O and PBS, and then probed with the primary antibody at 1/200 dilution for 1 hour at room temperature. The detection was performed using an HRP conjugated compact polymer system. DAB was used as the chromogen. Tissues were counterstained with hematoxylin and mounted with DPX.



Immunohistochemistry-Paraffin: eIF4E [p Ser209] Antibody (SU0396) [NBP2-66802] - Analysis of paraffin-embedded mouse brain tissue with Rabbit anti-Phospho-eIF4E (S209) antibody washed with ddH₂O and PBS, and then probed with the primary antibody at 1/200 dilution for 1 hour at room temperature. The detection was performed using an HRP conjugated compact polymer system. DAB was used as the chromogen. Tissues were counterstained with hematoxylin and mounted with DPX.



Publications

Bou-Petit E, HUMmer S, Alarcon H et al. Overcoming Paradoxical Kinase Priming by a Novel MNK1 Inhibitor Journal of medicinal chemistry 2022-04-28 [PMID: 35417652] (WB, Human)



Novus Biologicals USA

10730 E. Briarwood Avenue
Centennial, CO 80112
USA
Phone: 303.730.1950
Toll Free: 1.888.506.6887
Fax: 303.730.1966
nb-customerservice@bio-techne.com

Bio-Techne Canada

21 Canmotor Ave
Toronto, ON M8Z 4E6
Canada
Phone: 905.827.6400
Toll Free: 855.668.8722
Fax: 905.827.6402
canada.inquires@bio-techne.com

Bio-Techne Ltd

19 Barton Lane
Abingdon Science Park
Abingdon, OX14 3NB, United Kingdom
Phone: (44) (0) 1235 529449
Free Phone: 0800 37 34 15
Fax: (44) (0) 1235 533420
info.EMEA@bio-techne.com

General Contact Information

www.novusbio.com
Technical Support: nb-technical@bio-
techne.com
Orders: nb-customerservice@bio-techne.com
General: novus@novusbio.com

Limitations

This product is for research use only and is not approved for use in humans or in clinical diagnosis. Primary Antibodies are guaranteed for 1 year from date of receipt.

For more information on our 100% guarantee, please visit www.novusbio.com/guarantee

Earn gift cards/discounts by submitting a review: www.novusbio.com/reviews/submit/NBP2-66802

Earn gift cards/discounts by submitting a publication using this product:
www.novusbio.com/publications

