

Product Datasheet

LEF1 Antibody (REMB6) NBP2-66626

Unit Size: 250 ug

Store at -20C. Avoid freeze-thaw cycles.

www.novusbio.com



technical@novusbio.com

Protocols, Publications, Related Products, Reviews, Research Tools and Images at:
www.novusbio.com/NBP2-66626

Updated 10/30/2024 v.20.1

Earn rewards for product
reviews and publications.

Submit a publication at www.novusbio.com/publications

Submit a review at www.novusbio.com/reviews/destination/NBP2-66626



NBP2-66626**LEF1 Antibody (REMB6)****Product Information**

Unit Size	250 ug
Concentration	Please see the vial label for concentration. If unlisted please contact technical services.
Storage	Store at -20C. Avoid freeze-thaw cycles.
Clonality	Monoclonal
Clone	REMB6
Preservative	0.08% Sodium Azide
Isotype	IgG1
Purity	Protein A or G purified
Buffer	PBS

Product Description

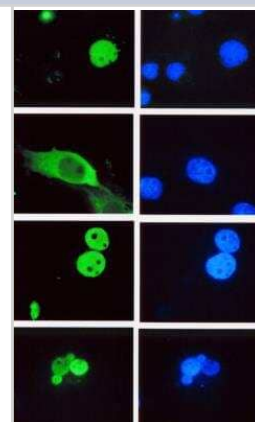
Host	Mouse
Gene ID	51176
Gene Symbol	LEF1
Species	Human, Mouse
Immunogen	Full-length recombinant LEF-1 protein

Product Application Details

Applications	Western Blot, Immunocytochemistry/ Immunofluorescence, Immunohistochemistry
Recommended Dilutions	Western Blot, Immunohistochemistry 1:10 - 1:500, Immunocytochemistry/ Immunofluorescence

Images

Immunocytochemistry/Immunofluorescence: LEF1 Antibody (REMB6) [NBP2-66626] - Immunofluorescence staining of Cos-1 cells transfected with (top to bottom) full length hLEF-1, a LEF-1 mutant missing the nuclear localization signal, TCF-4 and TCF-1. Cells were stained with Novus' LEF-1 antibody, clone REMB6 cat. # NBP2-66626 and visualized with FITC conjugated mouse IgG. DAPI was used to detect all nuclei. The LEF/TCF/HMG, clone REMB6 recognizes an epitope in the highly conserved HMG DNA binding domain.





Novus Biologicals USA

10730 E. Briarwood Avenue
Centennial, CO 80112
USA
Phone: 303.730.1950
Toll Free: 1.888.506.6887
Fax: 303.730.1966
nb-customerservice@bio-techne.com

Bio-Techne Canada

21 Canmotor Ave
Toronto, ON M8Z 4E6
Canada
Phone: 905.827.6400
Toll Free: 855.668.8722
Fax: 905.827.6402
canada.inquires@bio-techne.com

Bio-Techne Ltd

19 Barton Lane
Abingdon Science Park
Abingdon, OX14 3NB, United Kingdom
Phone: (44) (0) 1235 529449
Free Phone: 0800 37 34 15
Fax: (44) (0) 1235 533420
info.EMEA@bio-techne.com

General Contact Information

www.novusbio.com
Technical Support: nb-technical@bio-techne.com
Orders: nb-customerservice@bio-techne.com
General: novus@novusbio.com

Limitations

This product is for research use only and is not approved for use in humans or in clinical diagnosis. Primary Antibodies are guaranteed for 1 year from date of receipt.

For more information on our 100% guarantee, please visit www.novusbio.com/guarantee

Earn gift cards/discounts by submitting a review: www.novusbio.com/reviews/submit/NBP2-66626

Earn gift cards/discounts by submitting a publication using this product:
www.novusbio.com/publications

