

Product Datasheet

Donkey F(ab')₂ anti-Rabbit IgG (H+L) Secondary Antibody (Pre-adsorbed) NBP2-62589

Unit Size: 0.5 mg

Store at 4C short term. Aliquot and store at -20C long term. Avoid freeze-thaw cycles.

www.novusbio.com



technical@novusbio.com

Publications: 1

Protocols, Publications, Related Products, Reviews, Research Tools and Images at:
www.novusbio.com/NBP2-62589

Updated 10/23/2024 v.20.1

Earn rewards for product
reviews and publications.

Submit a publication at www.novusbio.com/publications

Submit a review at www.novusbio.com/reviews/destination/NBP2-62589



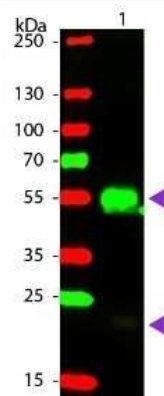
NBP2-62589Donkey F(ab')₂ anti-Rabbit IgG (H+L) Secondary Antibody (Pre-adsorbed)

Product Information	
Unit Size	0.5 mg
Concentration	Please see the vial label for concentration. If unlisted please contact technical services.
Storage	Store at 4C short term. Aliquot and store at -20C long term. Avoid freeze-thaw cycles.
Clonality	Polyclonal
Preservative	0.01% Sodium Azide
Isotype	IgG
Purity	Multi-step
Buffer	0.02 M Potassium Phosphate, 0.15 M Sodium Chloride, pH 7.2
Product Description	
Description	<p>This product was prepared from monospecific antiserum by immunoaffinity chromatography using Rabbit IgG coupled to agarose beads followed by solid phase adsorption(s) to remove any unwanted reactivities, pepsin digestion and chromatographic separation. Assay by immunoelectrophoresis resulted in a single precipitin arc against anti-Donkey Serum, Rabbit IgG, and Rabbit Serum</p> <p>Store vial at 4C prior to opening. This product is stable for several weeks at 4C as an undiluted liquid. Dilute only prior to immediate use. For extended storage aliquot contents and freeze at -20C or below. Avoid cycles of freezing and thawing.</p>
Host	Donkey
Species	Rabbit
Specificity/Sensitivity	No reaction was observed against anti-Pepsin, anti-Donkey IgG F(c), or Bovine, Chicken, Goat, Guinea Pig, Hamster, Horse, Human, Mouse, Rat, and Sheep Serum Proteins.
Immunogen	Rabbit IgG whole molecule
Product Application Details	
Applications	Western Blot, Dot Blot, ELISA, Immunohistochemistry
Recommended Dilutions	Western Blot 1:2000-1:10000, ELISA 1:20000 - 1:100000, Immunohistochemistry 1:1000 - 1:5000, Dot Blot
Application Notes	This product has been tested by ELISA and is suitable for immunomicroscopy and flow cytometry or FACS analysis as well as other antibody based fluorescent assays requiring extremely low background levels, absence of F(c) mediated binding, lot-to-lot consistency, high titer and specificity. The maximum amount of reagent required to stain 1 x 10 ⁶ cells in flow cytometry is approximately 1.0 ug of antibody. Lesser amounts of reagent may be sufficient for staining. Optimal titers for other applications should be determined by the researcher. As a general guideline dilutions of 1:100 to 1:250 should be suitable for most applications.

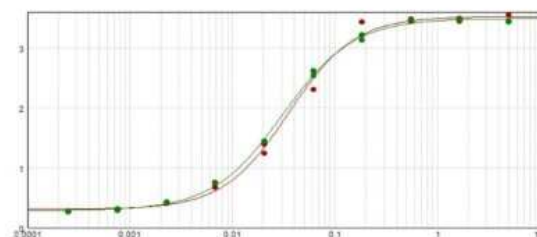


Images

Western Blot: Donkey F(ab')₂ anti-Rabbit IgG (H+L) Secondary Antibody (Pre-adsorbed) [NBP2-62589] - Lane 1: Rabbit IgG. Lane 2: None. Load: 50 ng per lane. Primary antibody: None. Secondary antibody: Phycoerythrin donkey secondary antibody at 1:1,000 for 60 min at RT. Blocking: incubated with blocking buffer for 30 min at RT. Predicted/Observed size: 25 & 55 kDa, 25 & 55 kDa for Rabbit IgG. Other band(s): None. Image from the PE version of this antibody.



ELISA: Donkey F(ab')₂ anti-Rabbit IgG (H+L) Secondary Antibody (Pre-adsorbed) [NBP2-62589] - ELISA results of purified Donkey F(ab')₂ anti-Rabbit IgG (H+L) Secondary Antibody [Unconjugated] (Pre-adsorbed) tested against purified Rabbit IgG. Each well was coated in duplicate with 1.0 ug of Rabbit IgG. The starting dilution of antibody was 5ug/ml and the X-axis represents the Log10 of a 3-fold dilution. This titration is a 4-parameter curve fit where the IC₅₀ is defined as the titer of the antibody. Assay performed using Blocking buffer



Publications

Luchetti F, Nasoni MG, Burattini S et al. Melatonin Attenuates Ischemic-like Cell Injury by Promoting Autophagosome Maturation via the Sirt1/FoxO1/Rab7 Axis in Hippocampal HT22 Cells and in Organotypic Cultures Cells 2022-11-21 [PMID: 36429130] (Immunocytochemistry/ Immunofluorescence)



Novus Biologicals USA

10730 E. Briarwood Avenue
Centennial, CO 80112
USA
Phone: 303.730.1950
Toll Free: 1.888.506.6887
Fax: 303.730.1966
nb-customerservice@bio-techne.com

Bio-Techne Canada

21 Canmotor Ave
Toronto, ON M8Z 4E6
Canada
Phone: 905.827.6400
Toll Free: 855.668.8722
Fax: 905.827.6402
canada.inquires@bio-techne.com

Bio-Techne Ltd

19 Barton Lane
Abingdon Science Park
Abingdon, OX14 3NB, United Kingdom
Phone: (44) (0) 1235 529449
Free Phone: 0800 37 34 15
Fax: (44) (0) 1235 533420
info.EMEA@bio-techne.com

General Contact Information

www.novusbio.com
Technical Support: nb-technical@bio-
techne.com
Orders: nb-customerservice@bio-techne.com
General: novus@novusbio.com

Limitations

This product is for research use only and is not approved for use in humans or in clinical diagnosis. Secondary Antibodies are guaranteed for 1 year from date of receipt.

For more information on our 100% guarantee, please visit www.novusbio.com/guarantee

Earn gift cards/discounts by submitting a review: www.novusbio.com/reviews/submit/NBP2-62589

Earn gift cards/discounts by submitting a publication using this product:
www.novusbio.com/publications

