

Product Datasheet

Phospholipid Scramblase 1/PLSCR1 Antibody (13A6 [TEC-23])

NBP2-62189

Unit Size: 0.1 ml

Store at 4C. Do not freeze.

www.novusbio.com



technical@novusbio.com

Protocols, Publications, Related Products, Reviews, Research Tools and Images at:
www.novusbio.com/NBP2-62189

Updated 7/28/2024 v.20.1

Earn rewards for product reviews and publications.

Submit a publication at www.novusbio.com/publications

Submit a review at www.novusbio.com/reviews/destination/NBP2-62189



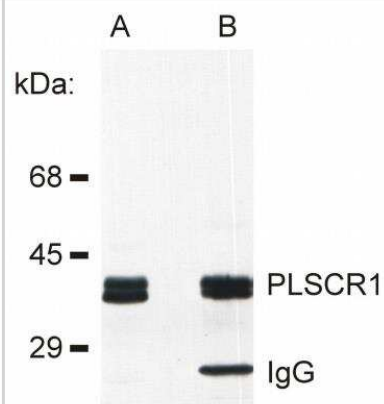
NBP2-62189**Phospholipid Scramblase 1/PLSCR1 Antibody (13A6 [TEC-23])**

Product Information	
Unit Size	0.1 ml
Concentration	This product is unpurified. The exact concentration of antibody is not quantifiable.
Storage	Store at 4C. Do not freeze.
Clonality	Monoclonal
Clone	13A6 [TEC-23]
Preservative	0.9% Sodium Azide
Isotype	IgG2a
Purity	Ascites
Buffer	Undiluted ascitic fluid
Target Molecular Weight	49 kDa
Product Description	
Host	Mouse
Gene ID	5359
Gene Symbol	PLSCR1
Species	Rat
Specificity/Sensitivity	The antibody 121SLE recognizes Sialyl Lewis a containing glycolipids.
Immunogen	Pooled lipid raft fraction isolated from RBL-2H3 cells
Product Application Details	
Applications	Western Blot, Flow Cytometry, Immunoprecipitation, Immunocytochemistry
Recommended Dilutions	Western Blot 1 ug/ml, Flow Cytometry 1:10-1:1000, Immunoprecipitation 1:10-1:500, Immunocytochemistry

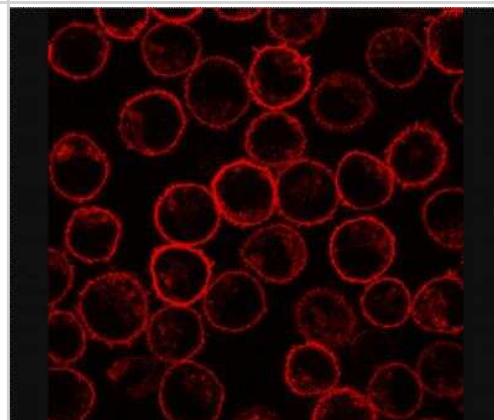


Images

Western Blot: Phospholipid Scramblase 1/PLSCR1 Antibody (13A6 [TEC-23]) [NBP2-62189] - Detection of PLSCR1 in rat basophilic leukemia (RBL) cell line lysate (A) and in PLSCR1 immunoprecipitate from RBL lysate (B). The antibody 13A6 (Tec-23) was used both for immunoprecipitation and immunodetection.



Immunocytochemistry/Immunofluorescence: Phospholipid Scramblase 1/PLSCR1 Antibody (13A6 [TEC-23]) [NBP2-62189] - Staining of PLSCR1 in rat basophilic leukemia (RBL) cell line using 13A6 (Tec-23) antibody.





Novus Biologicals USA

10730 E. Briarwood Avenue
Centennial, CO 80112
USA
Phone: 303.730.1950
Toll Free: 1.888.506.6887
Fax: 303.730.1966
nb-customerservice@bio-techne.com

Bio-Techne Canada

21 Canmotor Ave
Toronto, ON M8Z 4E6
Canada
Phone: 905.827.6400
Toll Free: 855.668.8722
Fax: 905.827.6402
canada.inquires@bio-techne.com

Bio-Techne Ltd

19 Barton Lane
Abingdon Science Park
Abingdon, OX14 3NB, United Kingdom
Phone: (44) (0) 1235 529449
Free Phone: 0800 37 34 15
Fax: (44) (0) 1235 533420
info.EMEA@bio-techne.com

General Contact Information

www.novusbio.com
Technical Support: nb-technical@bio-techne.com
Orders: nb-customerservice@bio-techne.com
General: novus@novusbio.com

Limitations

This product is for research use only and is not approved for use in humans or in clinical diagnosis. Primary Antibodies are guaranteed for 1 year from date of receipt.

For more information on our 100% guarantee, please visit www.novusbio.com/guarantee

Earn gift cards/discounts by submitting a review: www.novusbio.com/reviews/submit/NBP2-62189

Earn gift cards/discounts by submitting a publication using this product:
www.novusbio.com/publications

