

# Product Datasheet

## Human Kallikrein 8/Neuropsin ELISA Kit (Colorimetric) NBP2-62176

Unit Size: 1 Kit

Store at 4°C.

[www.novusbio.com](http://www.novusbio.com)



[technical@novusbio.com](mailto:technical@novusbio.com)

Protocols, Publications, Related Products, Reviews, Research Tools and Images at:  
[www.novusbio.com/NBP2-62176](http://www.novusbio.com/NBP2-62176)

Updated 1/15/2025 v.20.1

Earn rewards for product  
reviews and publications.

Submit a publication at [www.novusbio.com/publications](http://www.novusbio.com/publications)

Submit a review at [www.novusbio.com/reviews/destination/NBP2-62176](http://www.novusbio.com/reviews/destination/NBP2-62176)



**NBP2-62176****Human Kallikrein 8/Neurotrophin ELISA Kit (Colorimetric)****Product Information**

<b>Unit Size</b>	1 Kit
<b>Concentration</b>	Concentration is not relevant for this product. Please see the protocols for proper use of this product.
<b>Storage</b>	Store at 4°C.

**Product Description**

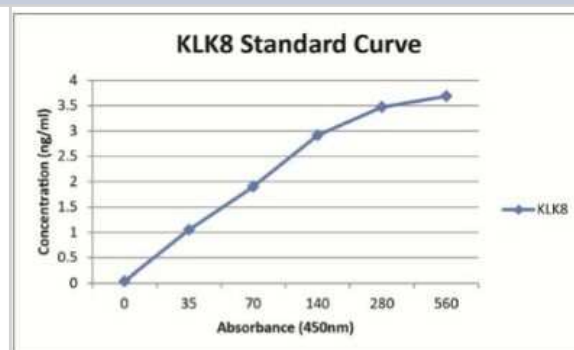
<b>Gene ID</b>	11202
<b>Gene Symbol</b>	KLK8
<b>Species</b>	Human
<b>Specificity/Sensitivity</b>	No cross-reactivity with other serine proteases was detected for this assay.
<b>Kit Components</b>	Microtiter Plate, Standards, Calibrators, Antibody, Antibody-conjugate Reporter, TMB Substrate, Stop Solution, Wash Buffer Concentrate
<b>Standard Curve Range</b>	35-560 ng/ml
<b>Sensitivity</b>	0.1 ng/ml
<b>Inter Assay</b>	N/A
<b>Intra Assay</b>	N/A
<b>Assay Type</b>	Sandwich ELISA
<b>Spiking Recovery</b>	N/A
<b>Suitable Sample Type</b>	Serum
<b>Sample Volume</b>	50 uL

**Product Application Details**

<b>Applications</b>	ELISA
<b>Recommended Dilutions</b>	ELISA

**Images**

ELISA: Human Kallikrein 8/Neurotrophin ELISA Kit (Colorimetric) [NBP2-62176] - A typical standard curve for Kallikrein 8/Neurotrophin ELISA kit. These standard curves are provided for demonstration only. A standard curve should be generated for each set of samples assayed.





### **Novus Biologicals USA**

10730 E. Briarwood Avenue  
Centennial, CO 80112  
USA  
Phone: 303.730.1950  
Toll Free: 1.888.506.6887  
Fax: 303.730.1966  
nb-customerservice@bio-techne.com

### **Bio-Techne Canada**

21 Canmotor Ave  
Toronto, ON M8Z 4E6  
Canada  
Phone: 905.827.6400  
Toll Free: 855.668.8722  
Fax: 905.827.6402  
canada.inquires@bio-techne.com

### **Bio-Techne Ltd**

19 Barton Lane  
Abingdon Science Park  
Abingdon, OX14 3NB, United Kingdom  
Phone: (44) (0) 1235 529449  
Free Phone: 0800 37 34 15  
Fax: (44) (0) 1235 533420  
info.EMEA@bio-techne.com

### **General Contact Information**

[www.novusbio.com](http://www.novusbio.com)  
Technical Support: nb-technical@bio-techne.com  
Orders: nb-customerservice@bio-techne.com  
General: novus@novusbio.com

### **Limitations**

This product is for research use only and is not approved for use in humans or in clinical diagnosis. ELISA Kits are guaranteed for 6 months from date of receipt.

For more information on our 100% guarantee, please visit [www.novusbio.com/guarantee](http://www.novusbio.com/guarantee)

Earn gift cards/discounts by submitting a review: [www.novusbio.com/reviews/submit/NBP2-62176](http://www.novusbio.com/reviews/submit/NBP2-62176)

Earn gift cards/discounts by submitting a publication using this product:  
[www.novusbio.com/publications](http://www.novusbio.com/publications)

