

Product Datasheet

Human Neutrophil Elastase/ELA2 ELISA Kit (Colorimetric) NBP2-62170

Unit Size: 1 Kit

Storage of components varies. See protocol for specific instructions.

www.novusbio.com



technical@novusbio.com

Protocols, Publications, Related Products, Reviews, Research Tools and Images at:
www.novusbio.com/NBP2-62170

Updated 12/30/2020 v.20.1

Earn rewards for product
reviews and publications.

Submit a publication at www.novusbio.com/publications

Submit a review at www.novusbio.com/reviews/destination/NBP2-62170



NBP2-62170**Human Neutrophil Elastase/ELA2 ELISA Kit (Colorimetric)****Product Information**

Unit Size	1 Kit
Concentration	Concentration is not relevant for this product. Please see the protocols for proper use of this product.
Storage	Storage of components varies. See protocol for specific instructions.

Product Description

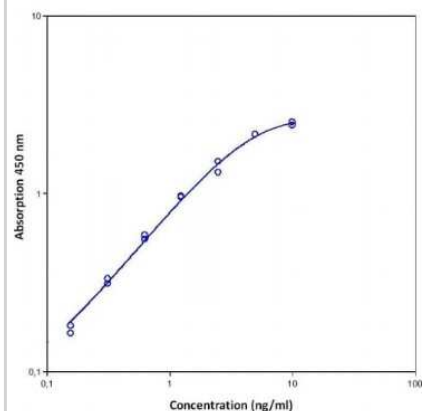
Gene ID	1991
Gene Symbol	ELANE
Species	Human
Kit Components	Plate, conjugate, standard, control high, control low, sample diluent, wash buffer concentrate, substrate solution, stop solution, adhesive films
Standard Curve Range	0.16 to 10ng/ml
Sensitivity	1.98ng/ml
Inter Assay	CV% < 5.6
Intra Assay	CV% < 4.8
Assay Type	Sandwich ELISA
Spiking Recovery	Recovery ranged from 96% to 110% with an overall mean recovery of 104%
Suitable Sample Type	Cell culture supernatants, plasma, other body fluids
Sample Volume	100 uL

Product Application Details

Applications	ELISA
Recommended Dilutions	ELISA

Images

ELISA: Human Neutrophil Elastase/ELA2 ELISA Kit (Colorimetric) [NBP2-62170] - Example standard curve for Human Neutrophil Elastase/ELA2 ELISA Kit (Colorimetric). These standard curves are provided for demonstration only. A standard curve should be generated for each set of samples assayed.





Novus Biologicals USA

10730 E. Briarwood Avenue
Centennial, CO 80112
USA
Phone: 303.730.1950
Toll Free: 1.888.506.6887
Fax: 303.730.1966
nb-customerservice@bio-techne.com

Bio-Techne Canada

21 Canmotor Ave
Toronto, ON M8Z 4E6
Canada
Phone: 905.827.6400
Toll Free: 855.668.8722
Fax: 905.827.6402
canada.inquires@bio-techne.com

Bio-Techne Ltd

19 Barton Lane
Abingdon Science Park
Abingdon, OX14 3NB, United Kingdom
Phone: (44) (0) 1235 529449
Free Phone: 0800 37 34 15
Fax: (44) (0) 1235 533420
info.EMEA@bio-techne.com

General Contact Information

www.novusbio.com
Technical Support: nb-technical@bio-techne.com
Orders: nb-customerservice@bio-techne.com
General: novus@novusbio.com

Limitations

This product is for research use only and is not approved for use in humans or in clinical diagnosis. ELISA Kits are guaranteed for 6 months from date of receipt.

For more information on our 100% guarantee, please visit www.novusbio.com/guarantee

Earn gift cards/discounts by submitting a review: www.novusbio.com/reviews/submit/NBP2-62170

Earn gift cards/discounts by submitting a publication using this product:
www.novusbio.com/publications

