

Product Datasheet

LVV Hemorphin 7 ELISA Kit (Colorimetric) NBP2-62158

Unit Size: 1 Kit

Storage of components varies. See protocol for specific instructions.

www.novusbio.com



technical@novusbio.com

Protocols, Publications, Related Products, Reviews, Research Tools and Images at:
www.novusbio.com/NBP2-62158

Updated 10/23/2024 v.20.1

Earn rewards for product
reviews and publications.

Submit a publication at www.novusbio.com/publications

Submit a review at www.novusbio.com/reviews/destination/NBP2-62158



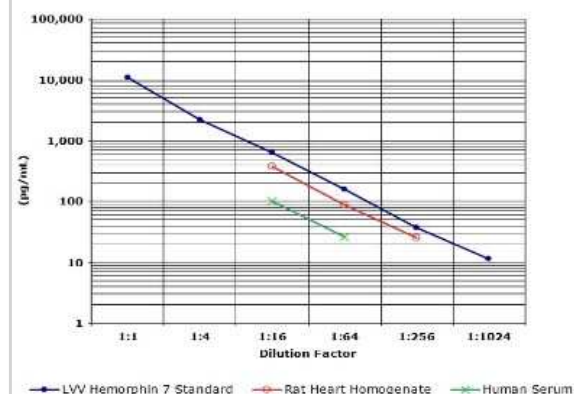
NBP2-62158**LVV Hemorphin 7 ELISA Kit (Colorimetric)**

Product Information	
Unit Size	1 Kit
Concentration	Concentration is not relevant for this product. Please see the protocols for proper use of this product.
Storage	Storage of components varies. See protocol for specific instructions.
Product Description	
Specificity/Sensitivity	Crossreactivity: LVV Hemorphin 7 (100%) and <0.003%: Leu-Valorphin-Arg (LVV Hemorphin-6), Valorphin, Angiotensin (1-12), Angiotensin I, Angiotensin (1-9), Angiotensin II, Angiotensin (1-7), Angiotensin A, Angiotensin III, Angiotensin IV
Kit Components	Microtiter Plate, Conjugate, Antibody, Assay Buffer 16, Wash Buffer Concentrate, Standard, TMB Substrate, Stop Solution 2, Streptavidin-HRP
Standard Curve Range	9.8 - 10,000 pg/ml
Sensitivity	6.1 pg/ml
Inter Assay	Low Concentration %CV - 16.5% Medium Concentration %CV - 9.5% High Concentration %CV - 9.2%
Intra Assay	Low Concentration %CV - 20.9% Medium Concentration %CV - 8.8% High Concentration %CV - 4.1%
Assay Type	Competitive ELISA
Spiking Recovery	Human Serum Low - 90% Medium - 103% High - 89% Rat Heart Homogenate Low - 91% Medium - 99% High - 96%
Suitable Sample Type	Serum, tissue homogenate
Sample Volume	100 uL
Product Application Details	
Applications	ELISA
Recommended Dilutions	ELISA

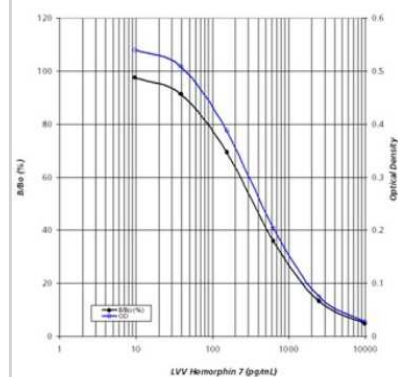


Images

ELISA: Non-species specific LVV Hemorpin 7 ELISA Kit (Colorimetric) [NBP2-62158] - Dose-response curves from human plasma and serum diluted into assay buffer were compared to the LVV Hemorpin 7 standard curve. The parallel response indicates the standard effectively mimics the native protein.



ELISA: Non-species specific LVV Hemorpin 7 ELISA Kit (Colorimetric) [NBP2-62158] - A typical standard curve for LVV Hemorpin 7 ELISA kit. These standard curves are provided for demonstration only. A standard curve should be generated for each set of samples assayed.





Novus Biologicals USA

10730 E. Briarwood Avenue
Centennial, CO 80112
USA
Phone: 303.730.1950
Toll Free: 1.888.506.6887
Fax: 303.730.1966
nb-customerservice@bio-techne.com

Bio-Techne Canada

21 Canmotor Ave
Toronto, ON M8Z 4E6
Canada
Phone: 905.827.6400
Toll Free: 855.668.8722
Fax: 905.827.6402
canada.inquires@bio-techne.com

Bio-Techne Ltd

19 Barton Lane
Abingdon Science Park
Abingdon, OX14 3NB, United Kingdom
Phone: (44) (0) 1235 529449
Free Phone: 0800 37 34 15
Fax: (44) (0) 1235 533420
info.EMEA@bio-techne.com

General Contact Information

www.novusbio.com
Technical Support: nb-technical@bio-
techne.com
Orders: nb-customerservice@bio-techne.com
General: novus@novusbio.com

Limitations

This product is for research use only and is not approved for use in humans or in clinical diagnosis. ELISA Kits are guaranteed for 6 months from date of receipt.

For more information on our 100% guarantee, please visit www.novusbio.com/guarantee

Earn gift cards/discounts by submitting a review: www.novusbio.com/reviews/submit/NBP2-62158

Earn gift cards/discounts by submitting a publication using this product:
www.novusbio.com/publications

