

Product Datasheet

5-MethylCytosine ELISA Kit (Colorimetric) NBP2-62131

Unit Size: 1 Kit

Storage of components varies. See protocol for specific instructions.

www.novusbio.com



technical@novusbio.com

Protocols, Publications, Related Products, Reviews, Research Tools and Images at:
www.novusbio.com/NBP2-62131

Updated 10/23/2024 v.20.1

Earn rewards for product
reviews and publications.

Submit a publication at www.novusbio.com/publications

Submit a review at www.novusbio.com/reviews/destination/NBP2-62131



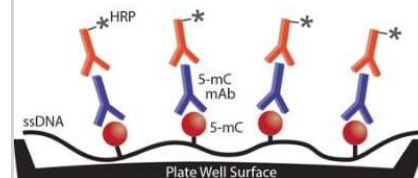
NBP2-62131**5-MethylCytosine ELISA Kit (Colorimetric)**

Product Information	
Unit Size	1 Kit
Concentration	Concentration is not relevant for this product. Please see the protocols for proper use of this product.
Storage	Storage of components varies. See protocol for specific instructions.
Product Description	
Kit Components	Microtiter Plate, Coating Buffer, ELISA Buffer, Primary Antibody, Antibody-conjugate, HRP Developer, Controls
Standard Curve Range	5-100% (100 ng/ul
Sensitivity	~0.5% 5-methylcytosine per 100ng single-stranded DNA
Inter Assay	N/A
Intra Assay	N/A
Assay Type	Indirect ELISA
Spiking Recovery	N/A
Suitable Sample Type	DNA samples
Sample Volume	100 uL
Product Application Details	
Applications	ELISA
Recommended Dilutions	ELISA

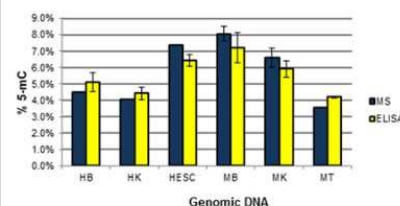


Images

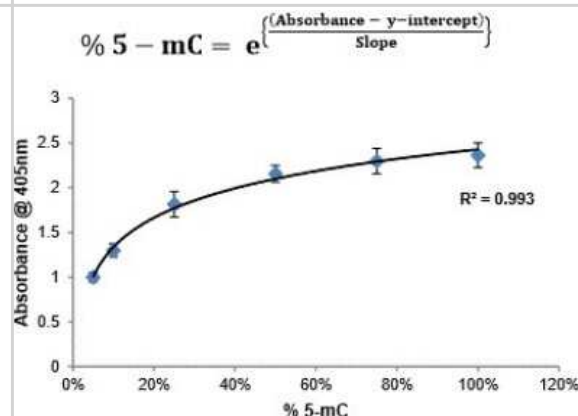
ELISA: Non-species specific 5-MethylCytosine ELISA Kit (Colorimetric) [NBP2-62131] - The workflow for the 5-Methylcytosine DNA ELISA kit utilizes the indirect ELISA methodology where denatured, single-stranded DNA (ssDNA) samples are coated on the plate well surfaces and a 5-mC mAb and conjugate HRP-Ab are added to the wells. Indirect



ELISA: Non-species specific 5-MethylCytosine ELISA Kit (Colorimetric) [NBP2-62131] - Comparison of genomic DNA Mass Spectroscopy versus 5-MethylCytosine ELISA analysis. Genomic DNA samples include: human brain (HB), human kidney (HK), human embryonic stem cell (HESC), mouse brain (MB), mouse kidney (MK), and mouse testes (MT).



ELISA: Non-species specific 5-MethylCytosine ELISA Kit (Colorimetric) [NBP2-62131] - A typical standard curve for 5-MethylCytosine ELISA kit. These standard curves are provided for demonstration only. A standard curve should be generated for each set of samples assayed.





Novus Biologicals USA

10730 E. Briarwood Avenue
Centennial, CO 80112
USA
Phone: 303.730.1950
Toll Free: 1.888.506.6887
Fax: 303.730.1966
nb-customerservice@bio-techne.com

Bio-Techne Canada

21 Canmotor Ave
Toronto, ON M8Z 4E6
Canada
Phone: 905.827.6400
Toll Free: 855.668.8722
Fax: 905.827.6402
canada.inquires@bio-techne.com

Bio-Techne Ltd

19 Barton Lane
Abingdon Science Park
Abingdon, OX14 3NB, United Kingdom
Phone: (44) (0) 1235 529449
Free Phone: 0800 37 34 15
Fax: (44) (0) 1235 533420
info.EMEA@bio-techne.com

General Contact Information

www.novusbio.com
Technical Support: nb-technical@bio-techne.com
Orders: nb-customerservice@bio-techne.com
General: novus@novusbio.com

Products Related to NBP2-62131

NBP2-42814	5-MethylCytosine Antibody (4111)
------------	----------------------------------

Limitations

This product is for research use only and is not approved for use in humans or in clinical diagnosis. ELISA Kits are guaranteed for 6 months from date of receipt.

For more information on our 100% guarantee, please visit www.novusbio.com/guarantee

Earn gift cards/discounts by submitting a review: www.novusbio.com/reviews/submit/NBP2-62131

Earn gift cards/discounts by submitting a publication using this product:
www.novusbio.com/publications

