

Product Datasheet

IgG1 Antibody (RM117) NBP2-62028

Unit Size: 100 ug

Store at -20C. Avoid freeze-thaw cycles.

www.novusbio.com



technical@novusbio.com

Publications: 1

Protocols, Publications, Related Products, Reviews, Research Tools and Images at:
www.novusbio.com/NBP2-62028

Updated 9/9/2025 v.20.1

**Earn rewards for product
reviews and publications.**

Submit a publication at www.novusbio.com/publications

Submit a review at www.novusbio.com/reviews/destination/NBP2-62028



NBP2-62028

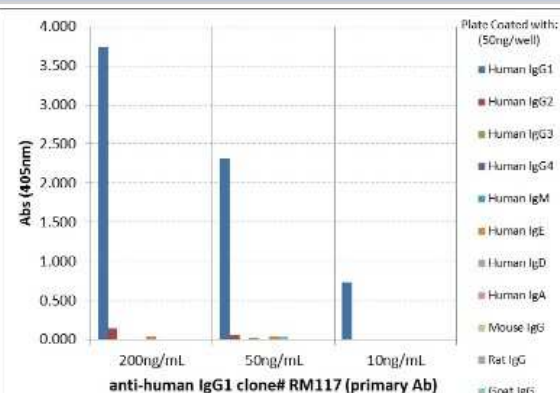
IgG1 Antibody (RM117)

Product Information	
Unit Size	100 ug
Concentration	1 mg/ml
Storage	Store at -20C. Avoid freeze-thaw cycles.
Clonality	Monoclonal
Clone	RM117
Preservative	0.09% Sodium Azide
Isotype	IgG
Purity	Protein A purified
Buffer	50% Glycerol/PBS, 1% BSA
Product Description	
Description	Novus Biologicals Rabbit IgG1 Antibody (RM117) (NBP2-62028) is a recombinant monoclonal antibody validated for use in IHC, ELISA, Flow, ICC/IF and IP. All Novus Biologicals antibodies are covered by our 100% guarantee.
Host	Rabbit
Species	Human
Specificity/Sensitivity	This antibody reacts to the heavy chain of human IgG1. It does not cross react to any other IgG subclasses (IgG2, IgG3, or IgG4), and shows no cross reactivity to IgM, IgA, IgD, IgE. This antibody does not react to monkey (Cyno or Rhesus) IgG, mouse IgG, rat IgG, or goat IgG.
Immunogen	Peptide corresponding to the hinge region of Human IgG1
Product Application Details	
Applications	Immunohistochemistry-Paraffin, ELISA, Flow Cytometry, Immunocytochemistry/ Immunofluorescence, Immunohistochemistry, Sandwich ELISA Capture, Sandwich ELISA Detection
Recommended Dilutions	Flow Cytometry 2ug/ml-8ug/ml, ELISA, Immunohistochemistry 0.5ug/ml - 2ug/ml, Immunocytochemistry/ Immunofluorescence 0.5ug/ml - 2ug/ml, Immunohistochemistry-Paraffin 0.5ug/ml - 2ug/ml, Sandwich ELISA Capture 50 - 200ng/well, Sandwich ELISA Detection 0.05 - 0.2ug/ml

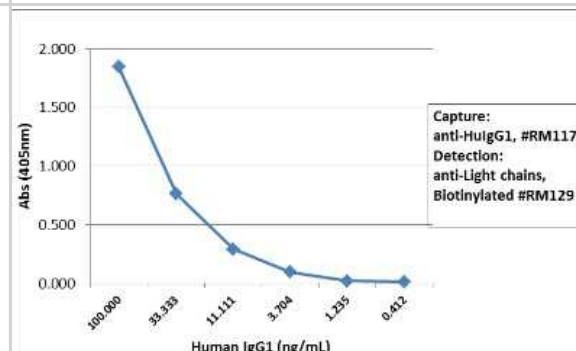


Images

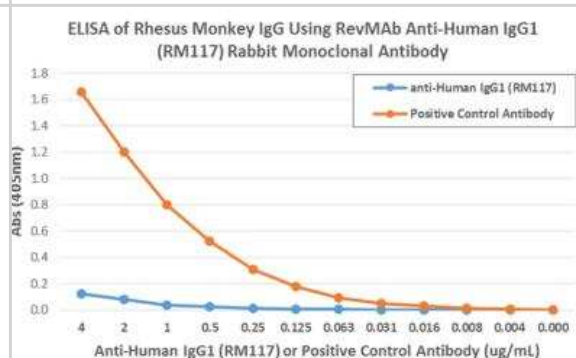
ELISA: IgG1 Antibody (RM117) [Unconjugated] [NBP2-62028] - ELISA of human immunoglobulins shows NBP2-62028 only reacts to human IgG1. No cross reactivity with Human IgG2, IgG3, IgG4, IgE, IgD, IgA, mouse IgG, rat IgG, or goat IgG. The plate was coated with different immunoglobulins. NBP2-62028 was used as the primary antibody. An alkaline phosphatase conjugated anti-rabbit IgG as the secondary antibody.



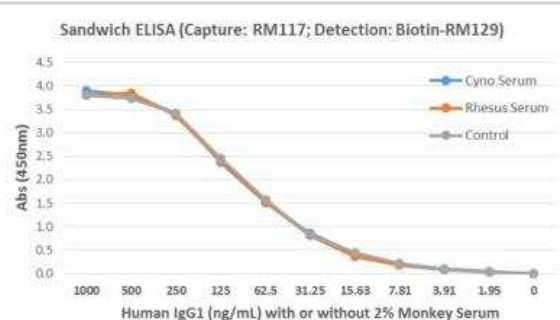
ELISA: IgG1 Antibody (RM117) [Unconjugated] [NBP2-62028] - Sandwich ELISA using NBP2-62028 as the capture antibody, and biotinylated anti-human light chains (kappa+lambda) antibody NBP2-77396 as the detection antibody, followed by an AP conjugated streptavidin.



ELISA: IgG1 Antibody (RM117) [Unconjugated] [NBP2-62028] - ELISA showing RM117 does not react to monkey IgG. The plate was coated with Rhesus monkey IgG. A serial dilution of RM117 and a monkey IgG binding antibody (positive control) was used as the detection antibody.



ELISA: IgG1 Antibody (RM117) [NBP2-62028] - Sandwich ELISA for detection of human IgG1 in monkey serum, using NBP2-62028 as the capture antibody and biotinylated-NBP2-77396 as the detection antibody. HRP conjugated streptavidin and TMB were used to yield the colorimetric reaction.



Publications

Gobin J Assessment of High Purity Mesenchymal Stromal Cells Derived Extracellular Vesicles Presenting NRP1 Show Functional Suppression of Activated Immune Cells Thesis 2022-01-01 (IP, Human)



Novus Biologicals USA

10730 E. Briarwood Avenue
Centennial, CO 80112
USA
Phone: 303.730.1950
Toll Free: 1.888.506.6887
Fax: 303.730.1966
nb-customerservice@bio-techne.com

Bio-Techne Canada

21 Canmotor Ave
Toronto, ON M8Z 4E6
Canada
Phone: 905.827.6400
Toll Free: 855.668.8722
Fax: 905.827.6402
canada.inquires@bio-techne.com

Bio-Techne Ltd

19 Barton Lane
Abingdon Science Park
Abingdon, OX14 3NB, United Kingdom
Phone: (44) (0) 1235 529449
Free Phone: 0800 37 34 15
Fax: (44) (0) 1235 533420
info.EMEA@bio-techne.com

General Contact Information

www.novusbio.com
Technical Support: nb-technical@bio-techne.com
Orders: nb-customerservice@bio-techne.com
General: novus@novusbio.com

Products Related to NBP2-62028

HAF008	Goat anti-Rabbit IgG Secondary Antibody [HRP]
NB7160	Goat anti-Rabbit IgG (H+L) Secondary Antibody [HRP]
NBP2-24891	Rabbit IgG Isotype Control
MAB002	Mouse IgG1 Isotype Control (11711) [Unconjugated]

Limitations

This product is for research use only and is not approved for use in humans or in clinical diagnosis. Primary Antibodies are guaranteed for 1 year from date of receipt.

For more information on our 100% guarantee, please visit www.novusbio.com/guarantee

Earn gift cards/discounts by submitting a review: www.novusbio.com/reviews/submit/NBP2-62028

Earn gift cards/discounts by submitting a publication using this product:
www.novusbio.com/publications

