

# Product Datasheet

## IgM Antibody (RM121) [Biotin] NBP2-62022B

Unit Size: 50 ug

Store at -20C. Avoid freeze-thaw cycles.

[www.novusbio.com](http://www.novusbio.com)



[technical@novusbio.com](mailto:technical@novusbio.com)

Protocols, Publications, Related Products, Reviews, Research Tools and Images at:  
[www.novusbio.com/NBP2-62022B](http://www.novusbio.com/NBP2-62022B)

Updated 10/23/2024 v.20.1

Earn rewards for product  
reviews and publications.

Submit a publication at [www.novusbio.com/publications](http://www.novusbio.com/publications)

Submit a review at [www.novusbio.com/reviews/destination/NBP2-62022B](http://www.novusbio.com/reviews/destination/NBP2-62022B)



**NBP2-62022B**

IgM Antibody (RM121) [Biotin]

Product Information	
Unit Size	50 ug
Concentration	1 mg/ml
Storage	Store at -20C. Avoid freeze-thaw cycles.
Clonality	Monoclonal
Clone	RM121
Preservative	0.09% Sodium Azide
Isotype	IgG
Conjugate	Biotin
Purity	Protein A purified
Buffer	PBS, 50% Glycerol, 1% BSA

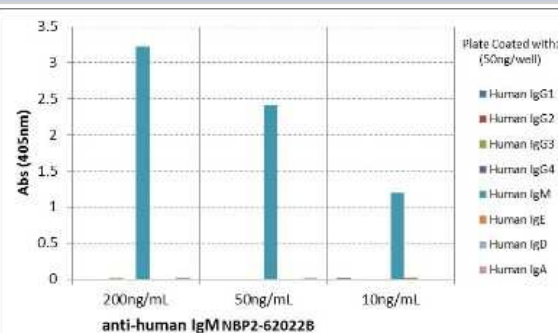
Product Description	
Host	Rabbit
Gene ID	3507
Gene Symbol	IGHM
Species	Human
Specificity/Sensitivity	This antibody reacts to the heavy chain of human IgM. No cross reactivity with human IgG, IgA, IgD, or IgE.
Immunogen	Human IgM

Product Application Details	
Applications	ELISA, Immunocytochemistry/ Immunofluorescence, Immunohistochemistry, Sandwich ELISA Capture, Sandwich ELISA Detection
Recommended Dilutions	ELISA, Immunohistochemistry 0.5ug/ml - 2ug/ml, Immunocytochemistry/ Immunofluorescence 0.5ug/ml - 2ug/ml, Sandwich ELISA Capture 50 - 200ng/well, Sandwich ELISA Detection 0.05 - 0.2ug/ml
Application Notes	This primary antibody can also be used as a secondary antibody.

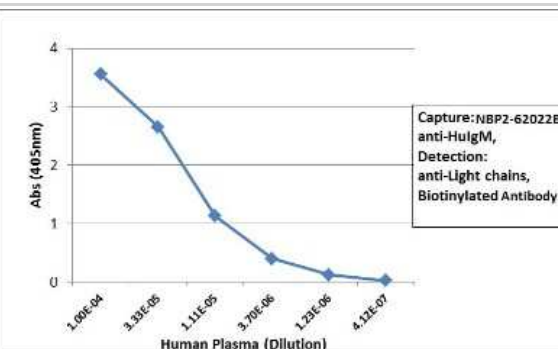


## Images

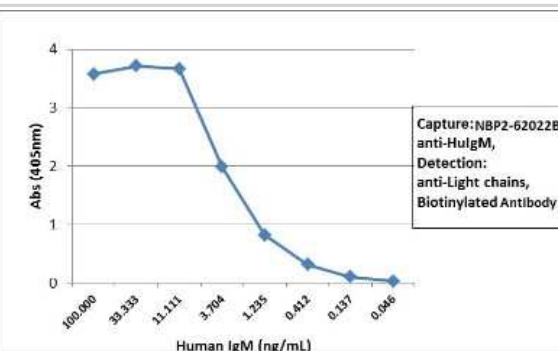
ELISA: IgM Antibody (RM121) [Biotin] [NBP2-62022B] - ELISA of human immunoglobulins shows NBP2-62022B reacts only to human IgM. No cross reactivity with Human IgG, IgE, IgD, or IgA. The plate was coated with different immunoglobulins. NBP2-62022B was used as the primary antibody. An alkaline phosphatase conjugated anti-rabbit IgG as the secondary antibody.



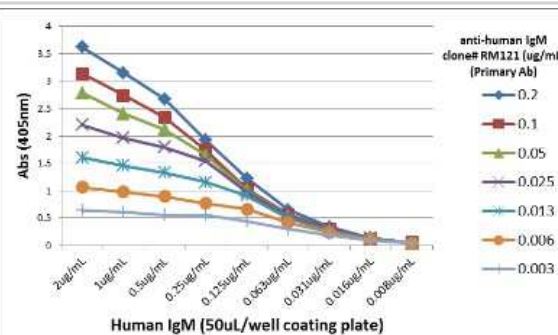
ELISA: IgM Antibody (RM121) [Biotin] [NBP2-62022B] - Sandwich ELISA using NBP2-62022B as the capture antibody (100 ng/well), and Biotinylated anti-human light chains (kappa + lambda) antibody as the detection antibody, followed by an alkaline phosphatase conjugated streptavidin.



ELISA: IgM Antibody (RM121) [Biotin] [NBP2-62022B] - Sandwich ELISA using NBP2-62022B as the capture antibody (100 ng/well), and Biotinylated anti-human light chains (kappa + lamda) antibody as the detection antibody, followed by an alkaline phosphatase conjugated streptavidin.



ELISA: IgM Antibody (RM121) [Biotin] [NBP2-62022B] - A titer ELISA using NBP2-62022B. The plate was coated with different amounts of human IgM. A serial dilution of NBP2-62022B was used as the primary antibody. An alkaline phosphatase conjugated anti-rabbit IgG as the secondary antibody.



**Novus Biologicals USA**

10730 E. Briarwood Avenue  
Centennial, CO 80112  
USA  
Phone: 303.730.1950  
Toll Free: 1.888.506.6887  
Fax: 303.730.1966  
nb-customerservice@bio-techne.com

**Bio-Techne Canada**

21 Canmotor Ave  
Toronto, ON M8Z 4E6  
Canada  
Phone: 905.827.6400  
Toll Free: 855.668.8722  
Fax: 905.827.6402  
canada.inquires@bio-techne.com

**Bio-Techne Ltd**

19 Barton Lane  
Abingdon Science Park  
Abingdon, OX14 3NB, United Kingdom  
Phone: (44) (0) 1235 529449  
Free Phone: 0800 37 34 15  
Fax: (44) (0) 1235 533420  
info.EMEA@bio-techne.com

**General Contact Information**

[www.novusbio.com](http://www.novusbio.com)  
Technical Support: nb-technical@bio-techne.com  
Orders: nb-customerservice@bio-techne.com  
General: novus@novusbio.com

**Products Related to NBP2-62022B**

NBP2-24891B	Rabbit IgG Isotype Control [Biotin]
H00003507-P01-10ug	Recombinant Human IgM GST (N-Term) Protein
7268-CT-100	CTLA-4 [Unconjugated]
F0116	Goat anti-Mouse IgM Secondary Antibody [Phycoerythrin]

**Limitations**

This product is for research use only and is not approved for use in humans or in clinical diagnosis. Primary Antibodies are guaranteed for 1 year from date of receipt.

For more information on our 100% guarantee, please visit [www.novusbio.com/guarantee](http://www.novusbio.com/guarantee)

Earn gift cards/discounts by submitting a review: [www.novusbio.com/reviews/submit/NBP2-62022B](http://www.novusbio.com/reviews/submit/NBP2-62022B)

Earn gift cards/discounts by submitting a publication using this product:  
[www.novusbio.com/publications](http://www.novusbio.com/publications)

