

Product Datasheet

Lambda Light Chain Antibody (RM110) NBP2-61910

Unit Size: 100 ug

Store at -20C. Avoid freeze-thaw cycles.

www.novusbio.com



technical@novusbio.com

Protocols, Publications, Related Products, Reviews, Research Tools and Images at:
www.novusbio.com/NBP2-61910

Updated 10/23/2024 v.20.1

Earn rewards for product
reviews and publications.

Submit a publication at www.novusbio.com/publications

Submit a review at www.novusbio.com/reviews/destination/NBP2-61910



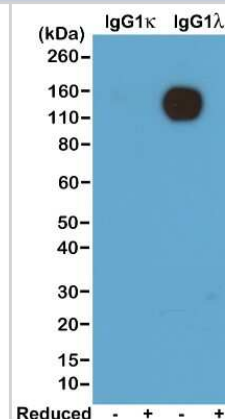
NBP2-61910**Lambda Light Chain Antibody (RM110)**

Product Information	
Unit Size	100 ug
Concentration	1 mg/ml
Storage	Store at -20C. Avoid freeze-thaw cycles.
Clonality	Monoclonal
Clone	RM110
Preservative	0.09% Sodium Azide
Isotype	IgG
Purity	Protein A purified
Buffer	50% Glycerol/PBS, 1% BSA
Product Description	
Host	Rabbit
Gene ID	3537
Gene Symbol	IGLC1
Species	Mouse
Specificity/Sensitivity	This antibody reacts to the lambda light chain of mouse immunoglobulins. No cross reactivity with the kappa light chain, human IgG, rat IgG, or goat IgG.
Immunogen	Mouse IgM Lambda
Product Application Details	
Applications	Western Blot, ELISA
Recommended Dilutions	Western Blot 0.1 - 0.5 ug/mL, ELISA 0.005 ug/ml - 0.2 ug/ml

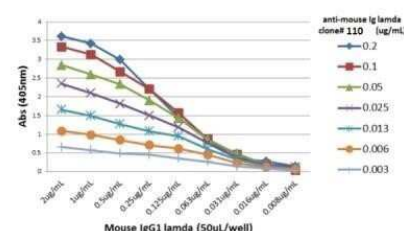


Images

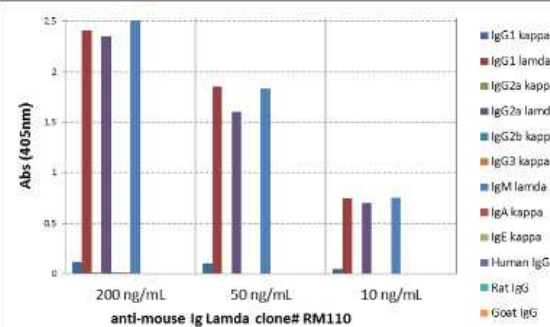
Western Blot: Lambda Light Chain Antibody (RM110) [NBP2-61910] - Western blot of nonreduced(-) and reduced(+) mouse IgG1k and IgG1l, using NBP2-61910. This antibody reacts to nonreduced IgG1 lambda.



ELISA: Lambda Light Chain Antibody (RM110) [NBP2-61910] - ELISA of mouse immunoglobulins shows NBP2-61910 reacts to the lambda light chain of mouse immunoglobulins. No cross reactivity with the kappa light chain, human IgG, rat IgG, or goat IgG. The plate was coated with different immunoglobulins. NBP2-61910 was used as the primary antibody. An alkaline phosphatase conjugated anti-rabbit IgG as the secondary antibody.



ELISA: Lambda Light Chain Antibody (RM110) [NBP2-61910] - A titer ELISA of mouse IgG1 lambda. The plate was coated with different amounts of mouse IgG1 lambda. A serial dilution of NBP2-61910 was used as the primary antibody. An alkaline phosphatase conjugated anti-rabbit IgG as the secondary antibody.





Novus Biologicals USA

10730 E. Briarwood Avenue
Centennial, CO 80112
USA
Phone: 303.730.1950
Toll Free: 1.888.506.6887
Fax: 303.730.1966
nb-customerservice@bio-techne.com

Bio-Techne Canada

21 Canmotor Ave
Toronto, ON M8Z 4E6
Canada
Phone: 905.827.6400
Toll Free: 855.668.8722
Fax: 905.827.6402
canada.inquires@bio-techne.com

Bio-Techne Ltd

19 Barton Lane
Abingdon Science Park
Abingdon, OX14 3NB, United Kingdom
Phone: (44) (0) 1235 529449
Free Phone: 0800 37 34 15
Fax: (44) (0) 1235 533420
info.EMEA@bio-techne.com

General Contact Information

www.novusbio.com
Technical Support: nb-technical@bio-techne.com
Orders: nb-customerservice@bio-techne.com
General: novus@novusbio.com

Products Related to NBP2-61910

HAF008	Goat anti-Rabbit IgG Secondary Antibody [HRP]
NB7160	Goat anti-Rabbit IgG (H+L) Secondary Antibody [HRP]
NBP2-24891	Rabbit IgG Isotype Control
NBP2-62002B	Lambda Light Chain Antibody (RM110) [Biotin]

Limitations

This product is for research use only and is not approved for use in humans or in clinical diagnosis. Primary Antibodies are guaranteed for 1 year from date of receipt.

For more information on our 100% guarantee, please visit www.novusbio.com/guarantee

Earn gift cards/discounts by submitting a review: www.novusbio.com/reviews/submit/NBP2-61910

Earn gift cards/discounts by submitting a publication using this product:
www.novusbio.com/publications

