

# Product Datasheet

## PD-L1 Antibody (RM320) NBP2-61579

Unit Size: 100 ul

Store at -20C. Avoid freeze-thaw cycles.

[www.novusbio.com](http://www.novusbio.com)



[technical@novusbio.com](mailto:technical@novusbio.com)

Protocols, Publications, Related Products, Reviews, Research Tools and Images at:  
[www.novusbio.com/NBP2-61579](http://www.novusbio.com/NBP2-61579)

Updated 7/17/2023 v.20.1

Earn rewards for product  
reviews and publications.

Submit a publication at [www.novusbio.com/publications](http://www.novusbio.com/publications)

Submit a review at [www.novusbio.com/reviews/destination/NBP2-61579](http://www.novusbio.com/reviews/destination/NBP2-61579)



**NBP2-61579**

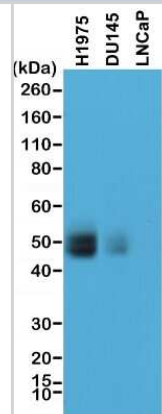
PD-L1 Antibody (RM320)

Product Information	
Unit Size	100 ul
Concentration	Please see the vial label for concentration. If unlisted please contact technical services.
Storage	Store at -20C. Avoid freeze-thaw cycles.
Clonality	Monoclonal
Clone	RM320
Preservative	0.09% Sodium Azide
Isotype	IgG
Purity	Protein A purified
Buffer	50% Glycerol/PBS with 1% BSA
Product Description	
Host	Rabbit
Gene ID	29126
Gene Symbol	CD274
Species	Human
Immunogen	A peptide corresponding to the C-terminus of Human PD-L1
Product Application Details	
Applications	Western Blot, Immunocytochemistry/Immunofluorescence, Immunohistochemistry, Immunohistochemistry-Paraffin
Recommended Dilutions	Western Blot 1:500-1:1000, Immunohistochemistry 1:200 - 1:1000, Immunocytochemistry/Immunofluorescence 1:200-1:500, Immunohistochemistry-Paraffin 1:200-1:1000

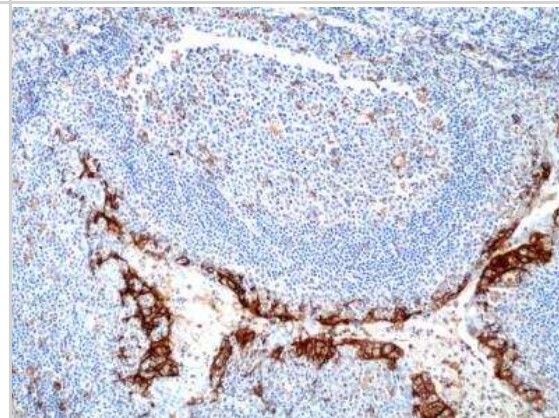


## Images

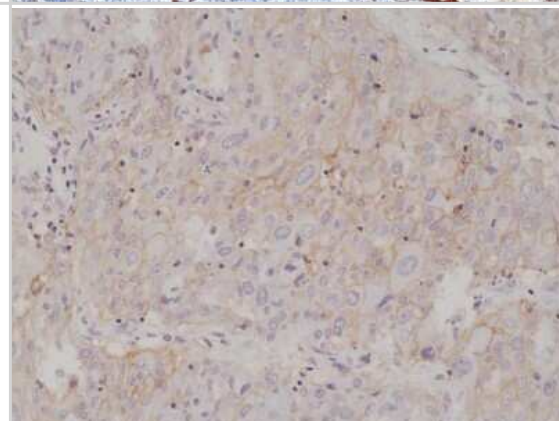
Western Blot: PD-L1 Antibody (RM320) [NBP2-61579] - Lysates H1975, DU145, and LNCaP cells, using NBP2-61579 at a 1:1000 dilution.



Immunohistochemistry-Paraffin: PD-L1 Antibody (RM320) [NBP2-61579] - Immunohistochemical staining of formalin fixed and paraffin embedded human tonsil tissue section using NBP2-61579 at a 1:250 dilution.



Immunohistochemistry-Paraffin: PD-L1 Antibody (RM320) [NBP2-61579] - Human lung cancer tissue section using anti-PD-L1 rabbit monoclonal antibody (Clone RM320) at a 1:1000 dilution.





### **Novus Biologicals USA**

10730 E. Briarwood Avenue  
Centennial, CO 80112  
USA  
Phone: 303.730.1950  
Toll Free: 1.888.506.6887  
Fax: 303.730.1966  
nb-customerservice@bio-techne.com

### **Bio-Techne Canada**

21 Canmotor Ave  
Toronto, ON M8Z 4E6  
Canada  
Phone: 905.827.6400  
Toll Free: 855.668.8722  
Fax: 905.827.6402  
canada.inquires@bio-techne.com

### **Bio-Techne Ltd**

19 Barton Lane  
Abingdon Science Park  
Abingdon, OX14 3NB, United Kingdom  
Phone: (44) (0) 1235 529449  
Free Phone: 0800 37 34 15  
Fax: (44) (0) 1235 533420  
info.EMEA@bio-techne.com

### **General Contact Information**

[www.novusbio.com](http://www.novusbio.com)  
Technical Support: nb-technical@bio-techne.com  
Orders: nb-customerservice@bio-techne.com  
General: novus@novusbio.com

### **Limitations**

This product is for research use only and is not approved for use in humans or in clinical diagnosis. Primary Antibodies are guaranteed for 1 year from date of receipt.

For more information on our 100% guarantee, please visit [www.novusbio.com/guarantee](http://www.novusbio.com/guarantee)

Earn gift cards/discounts by submitting a review: [www.novusbio.com/reviews/submit/NBP2-61579](http://www.novusbio.com/reviews/submit/NBP2-61579)

Earn gift cards/discounts by submitting a publication using this product:  
[www.novusbio.com/publications](http://www.novusbio.com/publications)

