

Product Datasheet

p38 alpha Antibody (RM245) NBP2-61575

Unit Size: 100 ul

Store at -20C. Avoid freeze-thaw cycles.

www.novusbio.com



technical@novusbio.com

Protocols, Publications, Related Products, Reviews, Research Tools and Images at:
www.novusbio.com/NBP2-61575

Updated 7/17/2023 v.20.1

Earn rewards for product
reviews and publications.

Submit a publication at www.novusbio.com/publications

Submit a review at www.novusbio.com/reviews/destination/NBP2-61575



NBP2-61575

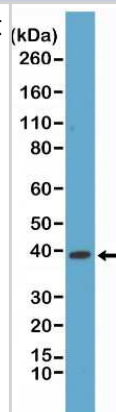
p38 alpha Antibody (RM245)

Product Information	
Unit Size	100 ul
Concentration	Please see the vial label for concentration. If unlisted please contact technical services.
Storage	Store at -20C. Avoid freeze-thaw cycles.
Clonality	Monoclonal
Clone	RM245
Preservative	0.09% Sodium Azide
Isotype	IgG
Purity	Protein A purified
Buffer	50% Glycerol/PBS with 1% BSA
Product Description	
Host	Rabbit
Gene ID	1432
Gene Symbol	MAPK14
Species	Human, Mouse, Rat
Specificity/Sensitivity	This antibody reacts to human p38 alpha. This antibody may also react to rat and mouse p38 alpha, as predicted by immunogen homology.
Immunogen	A peptide corresponding to Human p38 alpha
Product Application Details	
Applications	Western Blot, Immunohistochemistry, Immunohistochemistry-Paraffin
Recommended Dilutions	Western Blot 1:1000-1:2000, Immunohistochemistry 1:1000 - 1:5000, Immunohistochemistry-Paraffin 1:1000-1:5000

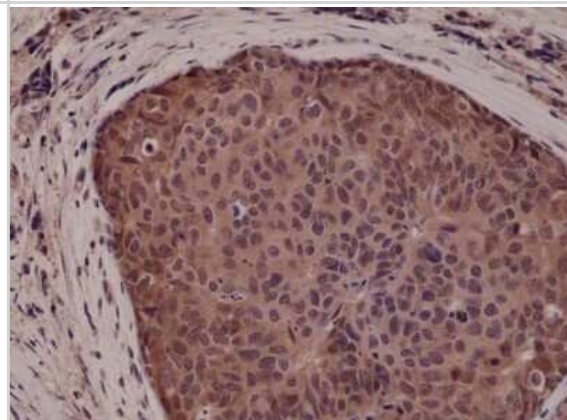


Images

Western Blot: p38 alpha Antibody (RM245) [NBP2-61575] - Western Blot of HeLa cells lysates using NBP2-61575, showed a band of p38 alpha (~38 kDa) expressed in HeLa cells.



Immunohistochemistry-Paraffin: p38 alpha Antibody (RM245) [NBP2-61575] - Immunohistochemical staining of formalin fixed and paraffin embedded human breast cancer tissue sections using NBP2-61575.





Novus Biologicals USA

10730 E. Briarwood Avenue
Centennial, CO 80112
USA
Phone: 303.730.1950
Toll Free: 1.888.506.6887
Fax: 303.730.1966
nb-customerservice@bio-techne.com

Bio-Techne Canada

21 Canmotor Ave
Toronto, ON M8Z 4E6
Canada
Phone: 905.827.6400
Toll Free: 855.668.8722
Fax: 905.827.6402
canada.inquires@bio-techne.com

Bio-Techne Ltd

19 Barton Lane
Abingdon Science Park
Abingdon, OX14 3NB, United Kingdom
Phone: (44) (0) 1235 529449
Free Phone: 0800 37 34 15
Fax: (44) (0) 1235 533420
info.EMEA@bio-techne.com

General Contact Information

www.novusbio.com
Technical Support: nb-technical@bio-techne.com
Orders: nb-customerservice@bio-techne.com
General: novus@novusbio.com

Limitations

This product is for research use only and is not approved for use in humans or in clinical diagnosis. Primary Antibodies are guaranteed for 1 year from date of receipt.

For more information on our 100% guarantee, please visit www.novusbio.com/guarantee

Earn gift cards/discounts by submitting a review: www.novusbio.com/reviews/submit/NBP2-61575

Earn gift cards/discounts by submitting a publication using this product:
www.novusbio.com/publications

