

# Product Datasheet

## Cytokeratin 5 Antibody (RM226)

### NBP2-61524

Unit Size: 100 ul

Store at -20C. Avoid freeze-thaw cycles.

[www.novusbio.com](http://www.novusbio.com)



[technical@novusbio.com](mailto:technical@novusbio.com)

Protocols, Publications, Related Products, Reviews, Research Tools and Images at:  
[www.novusbio.com/NBP2-61524](http://www.novusbio.com/NBP2-61524)

Updated 7/17/2023 v.20.1

Earn rewards for product  
reviews and publications.

Submit a publication at [www.novusbio.com/publications](http://www.novusbio.com/publications)

Submit a review at [www.novusbio.com/reviews/destination/NBP2-61524](http://www.novusbio.com/reviews/destination/NBP2-61524)



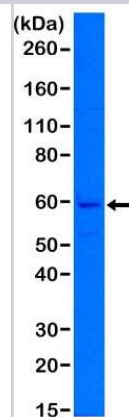
**NBP2-61524****Cytokeratin 5 Antibody (RM226)**

<b>Product Information</b>	
<b>Unit Size</b>	100 ul
<b>Concentration</b>	Please see the vial label for concentration. If unlisted please contact technical services.
<b>Storage</b>	Store at -20C. Avoid freeze-thaw cycles.
<b>Clonality</b>	Monoclonal
<b>Clone</b>	RM226
<b>Preservative</b>	0.09% Sodium Azide
<b>Isotype</b>	IgG
<b>Purity</b>	Protein A purified
<b>Buffer</b>	50% Glycerol/PBS with 1% BSA
<b>Product Description</b>	
<b>Host</b>	Rabbit
<b>Gene ID</b>	3852
<b>Gene Symbol</b>	KRT5
<b>Species</b>	Human
<b>Specificity/Sensitivity</b>	This antibody reacts to Human Cytokeratin 5. This antibody may also react to bovine, mouse, or rat Cytokeratin, as predicted by immunogen homology.
<b>Immunogen</b>	A peptide corresponding to the C-terminus of Human Cytokeratin 5
<b>Product Application Details</b>	
<b>Applications</b>	Western Blot, Immunohistochemistry, Immunohistochemistry-Paraffin
<b>Recommended Dilutions</b>	Western Blot 1:1000, Immunohistochemistry 1:100 -1:400, Immunohistochemistry-Paraffin 1:100 -1:400

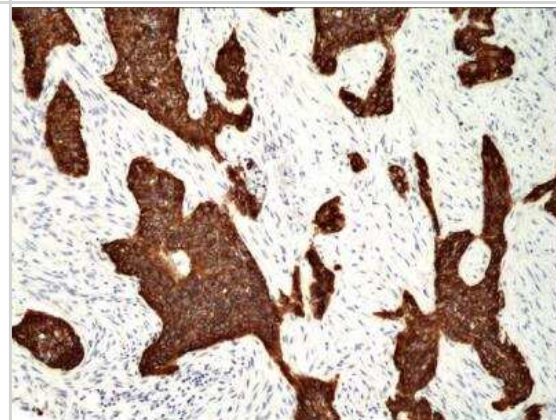


## Images

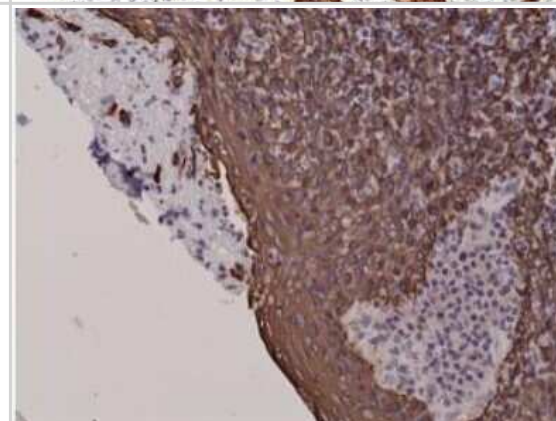
Western Blot: Cytokeratin 5 Antibody (RM226) [NBP2-61524] - Western Blot of A431 cell lysates using NBP2-61524, showed a band of Cytokeratin 5 expressed in A431 cells.



Immunohistochemistry-Paraffin: Cytokeratin 5 Antibody (RM226) [NBP2-61524] - Immunohistochemical staining of formalin fixed and paraffin embedded human Lung Squamous Cell Carcinoma tissue section using NBP2-61524 at a 1:200 dilution.



Immunohistochemistry-Paraffin: Cytokeratin 5 Antibody (RM226) [NBP2-61524] - Immunohistochemical staining of formalin fixed and paraffin embedded human tonsil tissue sections.





### **Novus Biologicals USA**

10730 E. Briarwood Avenue  
Centennial, CO 80112  
USA  
Phone: 303.730.1950  
Toll Free: 1.888.506.6887  
Fax: 303.730.1966  
nb-customerservice@bio-techne.com

### **Bio-Techne Canada**

21 Canmotor Ave  
Toronto, ON M8Z 4E6  
Canada  
Phone: 905.827.6400  
Toll Free: 855.668.8722  
Fax: 905.827.6402  
canada.inquires@bio-techne.com

### **Bio-Techne Ltd**

19 Barton Lane  
Abingdon Science Park  
Abingdon, OX14 3NB, United Kingdom  
Phone: (44) (0) 1235 529449  
Free Phone: 0800 37 34 15  
Fax: (44) (0) 1235 533420  
info.EMEA@bio-techne.com

### **General Contact Information**

[www.novusbio.com](http://www.novusbio.com)  
Technical Support: nb-technical@bio-techne.com  
Orders: nb-customerservice@bio-techne.com  
General: novus@novusbio.com

### **Limitations**

This product is for research use only and is not approved for use in humans or in clinical diagnosis. Primary Antibodies are guaranteed for 1 year from date of receipt.

For more information on our 100% guarantee, please visit [www.novusbio.com/guarantee](http://www.novusbio.com/guarantee)

Earn gift cards/discounts by submitting a review: [www.novusbio.com/reviews/submit/NBP2-61524](http://www.novusbio.com/reviews/submit/NBP2-61524)

Earn gift cards/discounts by submitting a publication using this product:  
[www.novusbio.com/publications](http://www.novusbio.com/publications)

