

Product Datasheet

alpha-Smooth Muscle Actin Antibody (RM253) NBP2-61486

Unit Size: 100 ul

Store at -20C. Avoid freeze-thaw cycles.

www.novusbio.com



technical@novusbio.com

Protocols, Publications, Related Products, Reviews, Research Tools and Images at:
www.novusbio.com/NBP2-61486

Updated 9/11/2024 v.20.1

Earn rewards for product
reviews and publications.

Submit a publication at www.novusbio.com/publications

Submit a review at www.novusbio.com/reviews/destination/NBP2-61486

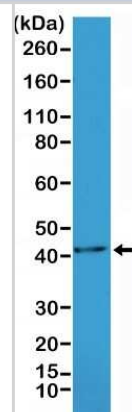


NBP2-61486**alpha-Smooth Muscle Actin Antibody (RM253)**

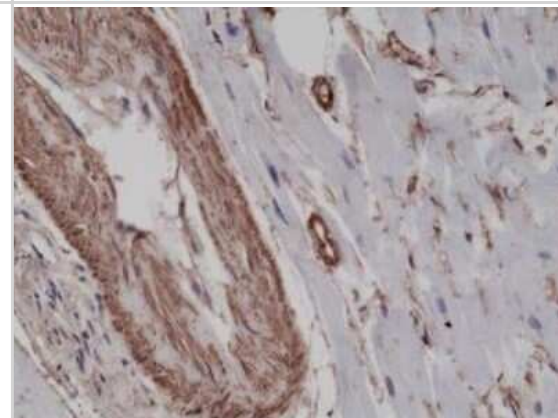
| Product Information | |
|------------------------------------|--|
| Unit Size | 100 ul |
| Concentration | Please see the vial label for concentration. If unlisted please contact technical services. |
| Storage | Store at -20C. Avoid freeze-thaw cycles. |
| Clonality | Monoclonal |
| Clone | RM253 |
| Preservative | 0.09% Sodium Azide |
| Isotype | IgG |
| Purity | Protein A purified |
| Buffer | 50% Glycerol/PBS with 1% BSA |
| Target Molecular Weight | 42 kDa |
| Product Description | |
| Host | Rabbit |
| Gene ID | 59 |
| Gene Symbol | ACTA2 |
| Species | Human, Mouse, Rat, Bovine |
| Specificity/Sensitivity | This antibody reacts to human and mouse alpha smooth muscle Actin (alpha-Actin-2). This antibody may also react to bovine or rat alpha smooth muscle Actin, as predicted by immunogen homology |
| Immunogen | Alpha-Smooth Muscle Actin Antibody (RM253) is a recombinant monoclonal made to a synthetic peptide corresponding to the N-terminus of Human Alpha-Smooth Muscle Actin. |
| Product Application Details | |
| Applications | Western Blot, Immunohistochemistry, Immunohistochemistry-Paraffin |
| Recommended Dilutions | Western Blot 1:1000-1:2000 , Immunohistochemistry 1:100 - 1:2500, Immunohistochemistry-Paraffin |

Images

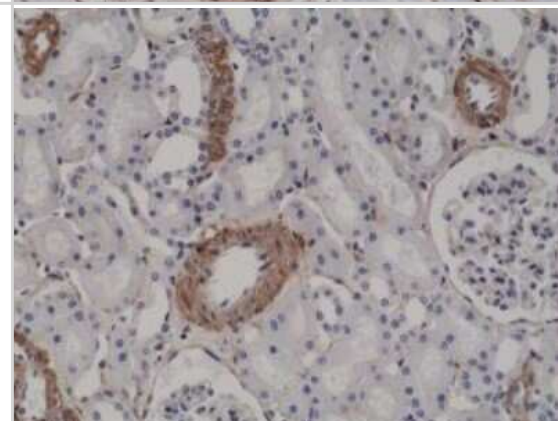
Western Blot: alpha-Smooth Muscle Actin Antibody (RM253) [NBP2-61486] - Western blot analysis of mouse heart tissue lysate at a 1:1000 dilution of alpha-Smooth Muscle Actin Antibody (RM253). The band indicates an observed molecular weight of ~42 kDa.



Immunohistochemistry-Paraffin: alpha-Smooth Muscle Actin Antibody (RM253) [NBP2-61486] - Staining of paraffin-embedded human heart tissue sections at a 1:2500 dilution of alpha-Smooth Muscle Actin Antibody (RM253).



Immunohistochemistry-Paraffin: alpha-Smooth Muscle Actin Antibody (RM253) [NBP2-61486] - Staining of paraffin-embedded human kidney tissue sections at a 1:2500 dilution of .





Novus Biologicals USA

10730 E. Briarwood Avenue
Centennial, CO 80112
USA
Phone: 303.730.1950
Toll Free: 1.888.506.6887
Fax: 303.730.1966
nb-customerservice@bio-techne.com

Bio-Techne Canada

21 Canmotor Ave
Toronto, ON M8Z 4E6
Canada
Phone: 905.827.6400
Toll Free: 855.668.8722
Fax: 905.827.6402
canada.inquires@bio-techne.com

Bio-Techne Ltd

19 Barton Lane
Abingdon Science Park
Abingdon, OX14 3NB, United Kingdom
Phone: (44) (0) 1235 529449
Free Phone: 0800 37 34 15
Fax: (44) (0) 1235 533420
info.EMEA@bio-techne.com

General Contact Information

www.novusbio.com
Technical Support: nb-technical@bio-
techne.com
Orders: nb-customerservice@bio-techne.com
General: novus@novusbio.com

Limitations

This product is for research use only and is not approved for use in humans or in clinical diagnosis. Primary Antibodies are guaranteed for 1 year from date of receipt.

For more information on our 100% guarantee, please visit www.novusbio.com/guarantee

Earn gift cards/discounts by submitting a review: www.novusbio.com/reviews/submit/NBP2-61486

Earn gift cards/discounts by submitting a publication using this product:
www.novusbio.com/publications

