

# Product Datasheet

## ErbB2/Her2 Antibody (RM228)

### NBP2-61466

Unit Size: 100 ul

Store at -20C. Avoid freeze-thaw cycles.

[www.novusbio.com](http://www.novusbio.com)



[technical@novusbio.com](mailto:technical@novusbio.com)

Protocols, Publications, Related Products, Reviews, Research Tools and Images at:  
[www.novusbio.com/NBP2-61466](http://www.novusbio.com/NBP2-61466)

Updated 7/17/2023 v.20.1

Earn rewards for product  
reviews and publications.

Submit a publication at [www.novusbio.com/publications](http://www.novusbio.com/publications)

Submit a review at [www.novusbio.com/reviews/destination/NBP2-61466](http://www.novusbio.com/reviews/destination/NBP2-61466)



**NBP2-61466**

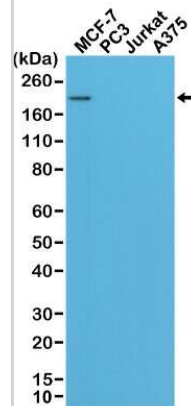
ErbB2/Her2 Antibody (RM228)

Product Information	
Unit Size	100 ul
Concentration	Please see the vial label for concentration. If unlisted please contact technical services.
Storage	Store at -20C. Avoid freeze-thaw cycles.
Clonality	Monoclonal
Clone	RM228
Preservative	0.09% Sodium Azide
Isotype	IgG
Purity	Protein A purified
Buffer	50% Glycerol/PBS with 1% BSA
Product Description	
Host	Rabbit
Gene ID	2064
Gene Symbol	ERBB2
Species	Human
Specificity/Sensitivity	This antibody reacts to Human ErbB2/Her2. This antibody may also react to mouse or rat ErbB2/Her2, as predicted by immunogen homology.
Immunogen	A peptide corresponding to the C-terminus of Human ErbB2/Her2
Product Application Details	
Applications	Western Blot, Immunohistochemistry, Immunohistochemistry-Paraffin
Recommended Dilutions	Western Blot 1:1000, Immunohistochemistry 1:100, Immunohistochemistry-Paraffin

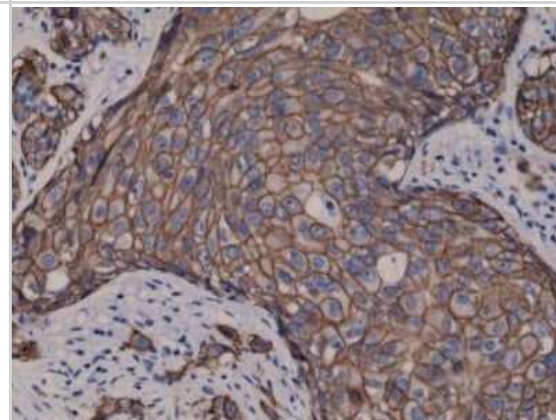


## Images

Western Blot: ErbB2/Her2 Antibody (RM228) [NBP2-61466] - Western Blot of MCF-7, PC3, Jurkat, and A375 cell lysates using NBP2-61466, showed a band of Her2 expressed only in MCF-7 cells.



Immunohistochemistry-Paraffin: ErbB2/Her2 Antibody (RM228) [NBP2-61466] - Staining of FFPE human breast cancer tissue sections.





### **Novus Biologicals USA**

10730 E. Briarwood Avenue  
Centennial, CO 80112  
USA  
Phone: 303.730.1950  
Toll Free: 1.888.506.6887  
Fax: 303.730.1966  
nb-customerservice@bio-techne.com

### **Bio-Techne Canada**

21 Canmotor Ave  
Toronto, ON M8Z 4E6  
Canada  
Phone: 905.827.6400  
Toll Free: 855.668.8722  
Fax: 905.827.6402  
canada.inquires@bio-techne.com

### **Bio-Techne Ltd**

19 Barton Lane  
Abingdon Science Park  
Abingdon, OX14 3NB, United Kingdom  
Phone: (44) (0) 1235 529449  
Free Phone: 0800 37 34 15  
Fax: (44) (0) 1235 533420  
info.EMEA@bio-techne.com

### **General Contact Information**

[www.novusbio.com](http://www.novusbio.com)  
Technical Support: nb-technical@bio-techne.com  
Orders: nb-customerservice@bio-techne.com  
General: novus@novusbio.com

### **Limitations**

This product is for research use only and is not approved for use in humans or in clinical diagnosis. Primary Antibodies are guaranteed for 1 year from date of receipt.

For more information on our 100% guarantee, please visit [www.novusbio.com/guarantee](http://www.novusbio.com/guarantee)

Earn gift cards/discounts by submitting a review: [www.novusbio.com/reviews/submit/NBP2-61466](http://www.novusbio.com/reviews/submit/NBP2-61466)

Earn gift cards/discounts by submitting a publication using this product:  
[www.novusbio.com/publications](http://www.novusbio.com/publications)

