

Product Datasheet

KLF4 Antibody (CL5785) - BSA Free NBP2-61427

Unit Size: 100 ul

Store at 4C short term. Aliquot and store at -20C long term. Avoid freeze-thaw cycles.

www.novusbio.com



technical@novusbio.com

Publications: 1

Protocols, Publications, Related Products, Reviews, Research Tools and Images at:
www.novusbio.com/NBP2-61427

Updated 9/9/2025 v.20.1

Earn rewards for product
reviews and publications.

Submit a publication at www.novusbio.com/publications

Submit a review at www.novusbio.com/reviews/destination/NBP2-61427



NBP2-61427

KLF4 Antibody (CL5785) - BSA Free

Product Information	
Unit Size	100 ul
Concentration	Concentrations vary lot to lot. See vial label for concentration. If unlisted please contact technical services.
Storage	Store at 4C short term. Aliquot and store at -20C long term. Avoid freeze-thaw cycles.
Clonality	Monoclonal
Clone	CL5785
Preservative	0.02% Sodium Azide
Isotype	IgG1
Purity	Protein A purified
Buffer	PBS (pH 7.2) and 40% Glycerol

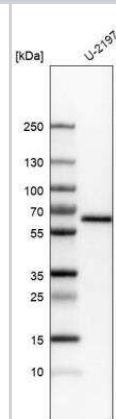
Product Description	
Description	Novus Biologicals Mouse KLF4 Antibody (CL5785) - BSA Free (NBP2-61427) is a monoclonal antibody validated for use in IHC, WB and ICC/IF. Anti-KLF4 Antibody: Cited in 1 publication. All Novus Biologicals antibodies are covered by our 100% guarantee.
Host	Mouse
Gene ID	9314
Gene Symbol	KLF4
Species	Human
Reactivity Notes	Mouse, Rat (89%).
Immunogen	This antibody was developed using a synthetic peptide derived from O43474, with the exact immunogen sequence remaining proprietary.

Product Application Details	
Applications	Western Blot, Immunohistochemistry-Paraffin, Immunocytochemistry/Immunofluorescence, Immunohistochemistry
Recommended Dilutions	Western Blot 1 ug/ml, Immunohistochemistry 1:1000 - 1:2500, Immunocytochemistry/ Immunofluorescence 2-10 ug/ml, Immunohistochemistry-Paraffin 1:1000 - 1:2500
Application Notes	For IHC-Paraffin, HIER pH 6 retrieval is recommended. Immunocytochemistry/Immunofluorescence Fixation Permeabilization: PFA/Triton X-100

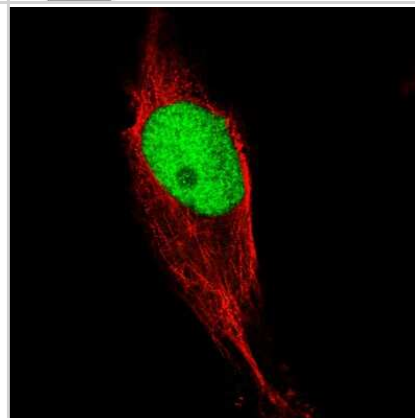


Images

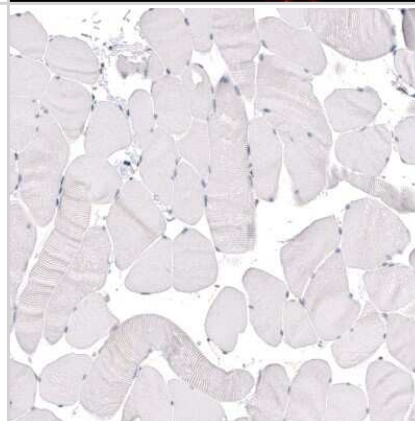
Western Blot: KLF4 Antibody (CL5785) [NBP2-61427] - Analysis in human cell line U-2197.



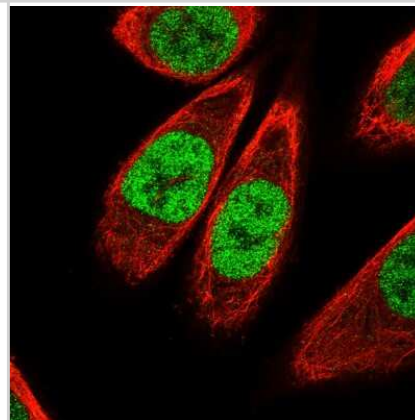
Immunocytochemistry/Immunofluorescence: KLF4 Antibody (CL5785) [NBP2-61427] - Staining of U-2197 cells using the Anti-KLF4 monoclonal antibody, showing specific staining in the nucleoplasm in green. Microtubule and nuclear probes are visualized in red and blue, respectively (where available). Antibody staining is shown in green.



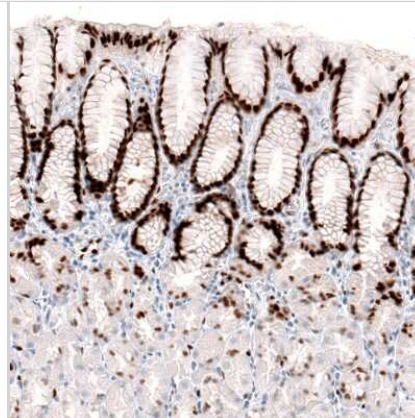
Immunohistochemistry-Paraffin: KLF4 Antibody (CL5785) [NBP2-61427] - Staining of human skeletal muscle shows absence of positivity in striated muscle fibers as expected (negative control).



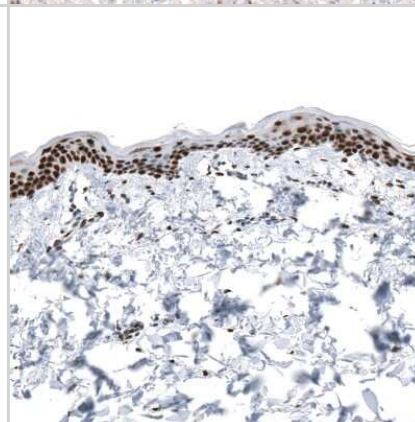
Immunocytochemistry/Immunofluorescence: KLF4 Antibody (CL5785) [NBP2-61427] - Staining of PC-3 cells using the Anti-KLF4 monoclonal antibody, showing specific staining in the nucleoplasm in green. Microtubule and nuclear probes are visualized in red and blue, respectively (where available). Antibody staining is shown in green.



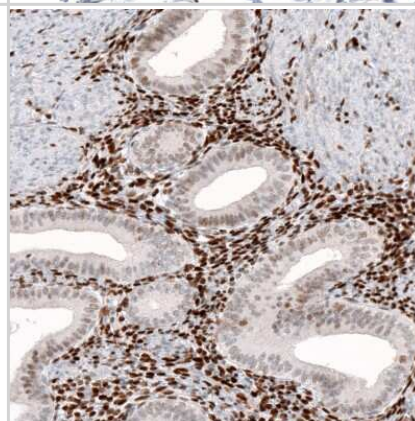
Immunohistochemistry-Paraffin: KLF4 Antibody (CL5785) [NBP2-61427]
 - Staining of human stomach shows moderate to strong nuclear immunoreactivity in glandular cells.



Immunohistochemistry-Paraffin: KLF4 Antibody (CL5785) [NBP2-61427]
 - Staining of human skin shows strong nuclear positivity in epithelial cells.



Immunohistochemistry-Paraffin: KLF4 Antibody (CL5785) [NBP2-61427]
 - Staining of human endometrium shows nuclear immunoreactivity in glandular and stromal cells.



Publications

Grande G, Milardi D, Martini M et al. Protein Expression of PTTG-1, OCT-4, and KLF-4 in Seminoma: A Pilot Study Front Endocrinol (Lausanne) 2019-09-11 [PMID: 31572301] (IHC-P, IF/IHC, Human)



Novus Biologicals USA

10730 E. Briarwood Avenue
Centennial, CO 80112
USA
Phone: 303.730.1950
Toll Free: 1.888.506.6887
Fax: 303.730.1966
nb-customerservice@bio-techne.com

Bio-Techne Canada

21 Canmotor Ave
Toronto, ON M8Z 4E6
Canada
Phone: 905.827.6400
Toll Free: 855.668.8722
Fax: 905.827.6402
canada.inquires@bio-techne.com

Bio-Techne Ltd

19 Barton Lane
Abingdon Science Park
Abingdon, OX14 3NB, United Kingdom
Phone: (44) (0) 1235 529449
Free Phone: 0800 37 34 15
Fax: (44) (0) 1235 533420
info.EMEA@bio-techne.com

General Contact Information

www.novusbio.com
Technical Support: nb-technical@bio-techne.com
Orders: nb-customerservice@bio-techne.com
General: novus@novusbio.com

Products Related to NBP2-61427

HAF007	Goat anti-Mouse IgG Secondary Antibody [HRP]
NB720-B	Rabbit anti-Mouse IgG (H+L) Secondary Antibody [Biotin]
NBP1-97005-0.5mg	Mouse IgG1 Isotype Control (MG1)
NBP1-72390-50ug	Recombinant Human KLF4 His-Cam Protein

Limitations

This product is for research use only and is not approved for use in humans or in clinical diagnosis. Primary Antibodies are guaranteed for 1 year from date of receipt.

For more information on our 100% guarantee, please visit www.novusbio.com/guarantee

Earn gift cards/discounts by submitting a review: www.novusbio.com/reviews/submit/NBP2-61427

Earn gift cards/discounts by submitting a publication using this product:
www.novusbio.com/publications

