

# Product Datasheet

## Recombinant Human IGF-I/IGF-1 Protein NBP2-61315-100ug

Unit Size: 100 ug

Store at -20C. Avoid freeze-thaw cycles.

[www.novusbio.com](http://www.novusbio.com)



[technical@novusbio.com](mailto:technical@novusbio.com)

Protocols, Publications, Related Products, Reviews, Research Tools and Images at:  
[www.novusbio.com/NBP2-61315](http://www.novusbio.com/NBP2-61315)

Updated 2/4/2021 v.20.1

Earn rewards for product  
reviews and publications.

Submit a publication at [www.novusbio.com/publications](http://www.novusbio.com/publications)

Submit a review at [www.novusbio.com/reviews/destination/NBP2-61315](http://www.novusbio.com/reviews/destination/NBP2-61315)



**NBP2-61315-100ug**

Recombinant Human IGF-I/IGF-1 Protein

Product Information	
Unit Size	100 ug
Concentration	Lyoph
Storage	Store at -20C. Avoid freeze-thaw cycles.
Preservative	No Preservative
Reconstitution Instructions	Recommended to centrifuge prior to opening. Reconstitute in sterile distilled water or aqueous buffer containing 0.1% BSA to a concentration of 0.1-1.0mg/mL. Apportion stock solutions into working aliquots and store at <-20C.
Purity	>98%, by SDS-PAGE under reducing conditions and visualized by silver stain
Buffer	Lyophilized from a 0.2 um filtered concentrated solution in PBS, pH 7.0.
Target Molecular Weight	9.1 kDa

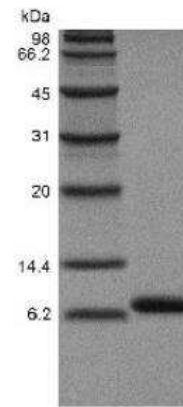
Product Description	
Description	<p>A single non-glycosylated polypeptide chain containing 83 amino acids (receptor grade).</p> <p><b>Source:</b> <i>Escherichia coli</i>.</p> <p><b>Amino Acid Sequence:</b>  MFPAMPLSSL FVNGPRTLPG AELVDALQFV CGDRGFYFNK PTGYGSSSR  APQTGIVDEC CFRSCDLRRL EMYCAPLKPA KSA</p>
Gene ID	3479
Gene Symbol	IGF1
Species	Human
Details of Functionality	<p>Assay 1: Fully biologically active when compared to standard. Measured in a serum-free cell proliferation assay using human MCF-7 cells. The ED50 for this effect is 0.3-1.5 ng/ml, corresponding to a specific activity of &gt; 6.7 x 10<sup>5</sup> IU/mg.</p> <p>Assay 2: Fully biologically active when compared to standard. The ED50 as determined by the stimulation of protein synthesis using rat L6 myoblasts is less than 10 ng/ml, corresponding to a specific activity of &gt; 1.0 x 10<sup>5</sup> IU/mg.</p>
Endotoxin Note	Less than 50 EU/mg of rHuLR3 IGF-1 as determined by LAL method.

Product Application Details	
Applications	Western Blot, SDS-Page, Bioactivity
Recommended Dilutions	Western Blot, SDS-Page, Bioactivity



## Images

SDS-Page: Recombinant Human IGF-I/IGF-1 Protein [NBP2-61315]





### **Novus Biologicals USA**

10730 E. Briarwood Avenue  
Centennial, CO 80112  
USA  
Phone: 303.730.1950  
Toll Free: 1.888.506.6887  
Fax: 303.730.1966  
nb-customerservice@bio-techne.com

### **Bio-Techne Canada**

21 Canmotor Ave  
Toronto, ON M8Z 4E6  
Canada  
Phone: 905.827.6400  
Toll Free: 855.668.8722  
Fax: 905.827.6402  
canada.inquires@bio-techne.com

### **Bio-Techne Ltd**

19 Barton Lane  
Abingdon Science Park  
Abingdon, OX14 3NB, United Kingdom  
Phone: (44) (0) 1235 529449  
Free Phone: 0800 37 34 15  
Fax: (44) (0) 1235 533420  
info.EMEA@bio-techne.com

### **General Contact Information**

[www.novusbio.com](http://www.novusbio.com)  
Technical Support: nb-technical@bio-techne.com  
Orders: nb-customerservice@bio-techne.com  
General: novus@novusbio.com

### **Limitations**

This product is for research use only and is not approved for use in humans or in clinical diagnosis. This product is guaranteed for 1 year from date of receipt.

For more information on our 100% guarantee, please visit [www.novusbio.com/guarantee](http://www.novusbio.com/guarantee)

Earn gift cards/discounts by submitting a review: [www.novusbio.com/reviews/submit/NBP2-61315](http://www.novusbio.com/reviews/submit/NBP2-61315)

Earn gift cards/discounts by submitting a publication using this product:  
[www.novusbio.com/publications](http://www.novusbio.com/publications)

