

# Product Datasheet

## CHMP7 Antibody NBP2-61238

Unit Size: 0.1 ml

Store the unopened product at 2 - 8° C. Protect from light. Do not use past expiration date.

[www.novusbio.com](http://www.novusbio.com)



[technical@novusbio.com](mailto:technical@novusbio.com)

Protocols, Publications, Related Products, Reviews, Research Tools and Images at:  
[www.novusbio.com/NBP2-61238](http://www.novusbio.com/NBP2-61238)

Updated 10/10/2022 v.20.1

Earn rewards for product  
reviews and publications.

Submit a publication at [www.novusbio.com/publications](http://www.novusbio.com/publications)

Submit a review at [www.novusbio.com/reviews/destination/NBP2-61238](http://www.novusbio.com/reviews/destination/NBP2-61238)



**NBP2-61238****CHMP7 Antibody****Product Information**

<b>Unit Size</b>	0.1 ml
<b>Concentration</b>	Please see the vial label for concentration. If unlisted please contact technical services.
<b>Storage</b>	Store the unopened product at 2 - 8° C. Protect from light. Do not use past expiration date.
<b>Clonality</b>	Polyclonal
<b>Preservative</b>	0.09% Sodium Azide
<b>Isotype</b>	IgG
<b>Purity</b>	Antigen Affinity-purified
<b>Buffer</b>	Tris-buffered Saline containing 0.1% BSA

**Product Description**

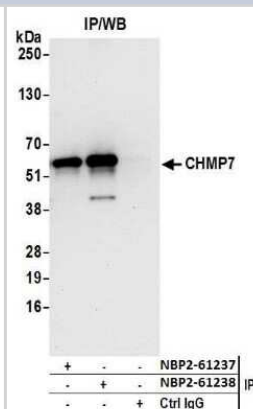
<b>Host</b>	Rabbit
<b>Gene ID</b>	91782
<b>Gene Symbol</b>	CHMP7
<b>Species</b>	Human
<b>Immunogen</b>	Between 400 and 450

**Product Application Details**

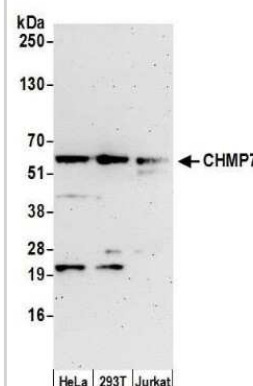
<b>Applications</b>	Western Blot, Immunoprecipitation
<b>Recommended Dilutions</b>	Western Blot 1:1000, Immunoprecipitation 20 ul/mg lysate

**Images**

Western Blot: CHMP7 Antibody [NBP2-61238] - Detection of human CHMP7 by western blot of immunoprecipitates. Samples: Whole cell lysate (1.0 mg per IP reaction; 20% of IP loaded) from 293T cells prepared using NETN lysis buffer. Antibodies: Affinity purified rabbit anti-CHMP7 antibody NBP2-61238 used for IP at 20 ul per reaction. CHMP7 was also immunoprecipitated by rabbit anti-CHMP7 antibody NBP2-61237. For blotting immunoprecipitated CHMP7, NBP2-61238 was used at 1:100. Detection: Chemiluminescence with an exposure time of 10 seconds.



Western Blot: CHMP7 Antibody [NBP2-61238] - Detection of human CHMP7 by western blot. Samples: Whole cell lysate (15 ug) from HeLa, 293T, and Jurkat cells prepared using NETN lysis buffer. Antibody: Affinity purified rabbit anti-CHMP7 antibody NBP2-61238 used for WB at 1:1000. Detection: Chemiluminescence with an exposure time of 3 minutes.





### **Novus Biologicals USA**

10730 E. Briarwood Avenue  
Centennial, CO 80112  
USA

Phone: 303.730.1950

Toll Free: 1.888.506.6887

Fax: 303.730.1966

[nb-customerservice@bio-techne.com](mailto:nb-customerservice@bio-techne.com)

### **Bio-Techne Canada**

21 Canmotor Ave  
Toronto, ON M8Z 4E6  
Canada

Phone: 905.827.6400

Toll Free: 855.668.8722

Fax: 905.827.6402

[canada.inquires@bio-techne.com](mailto:canada.inquires@bio-techne.com)

### **Bio-Techne Ltd**

19 Barton Lane  
Abingdon Science Park  
Abingdon, OX14 3NB, United Kingdom

Phone: (44) (0) 1235 529449

Free Phone: 0800 37 34 15

Fax: (44) (0) 1235 533420

[info.EMEA@bio-techne.com](mailto:info.EMEA@bio-techne.com)

### **General Contact Information**

[www.novusbio.com](http://www.novusbio.com)

Technical Support: [nb-technical@bio-techne.com](mailto:nb-technical@bio-techne.com)

Orders: [nb-customerservice@bio-techne.com](mailto:nb-customerservice@bio-techne.com)

General: [novus@novusbio.com](mailto:novus@novusbio.com)

### **Limitations**

This product is for research use only and is not approved for use in humans or in clinical diagnosis. Primary Antibodies are guaranteed for 1 year from date of receipt.

For more information on our 100% guarantee, please visit [www.novusbio.com/guarantee](http://www.novusbio.com/guarantee)

Earn gift cards/discounts by submitting a review: [www.novusbio.com/reviews/submit/NBP2-61238](http://www.novusbio.com/reviews/submit/NBP2-61238)

Earn gift cards/discounts by submitting a publication using this product:

[www.novusbio.com/publications](http://www.novusbio.com/publications)

