

Product Datasheet

B-Raf Antibody (K21-F) - V600-E Mutation - BSA Free NBP2-61221

Unit Size: 1 mg

Store at 4C short term. Aliquot and store at -20C long term. Avoid freeze-thaw cycles.

www.novusbio.com



technical@novusbio.com

Protocols, Publications, Related Products, Reviews, Research Tools and Images at:
www.novusbio.com/NBP2-61221

Updated 11/1/2022 v.20.1

Earn rewards for product
reviews and publications.

Submit a publication at www.novusbio.com/publications

Submit a review at www.novusbio.com/reviews/destination/NBP2-61221



NBP2-61221

B-Raf Antibody (K21-F) - V600-E Mutation - BSA Free

Product Information	
Unit Size	1 mg
Concentration	Please see the vial label for concentration. If unlisted please contact technical services.
Storage	Store at 4C short term. Aliquot and store at -20C long term. Avoid freeze-thaw cycles.
Clonality	Monoclonal
Clone	K21-F
Preservative	0.05% Sodium Azide
Isotype	IgG
Purity	Immunogen affinity purified

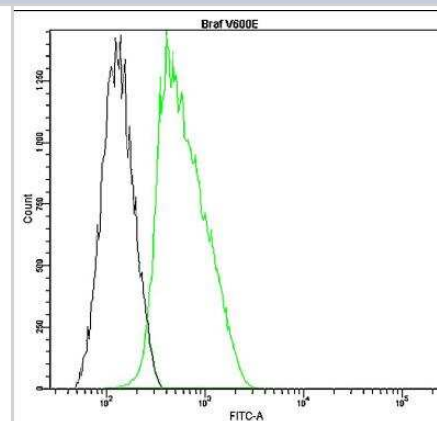
Product Description	
Host	Rabbit
Gene ID	673
Gene Symbol	BRAF
Species	Human
Specificity/Sensitivity	This antibody is specific for the detection of B-Raf V600-E mutated protein.
Immunogen	Immunogen raised against B-raf.
Notes	This antibody is immunoaffinity purified with immunogenic peptide as a ligand.

Product Application Details	
Applications	Flow Cytometry, Immunohistochemistry, Immunohistochemistry-Paraffin
Recommended Dilutions	Flow Cytometry, Immunohistochemistry, Immunohistochemistry-Paraffin

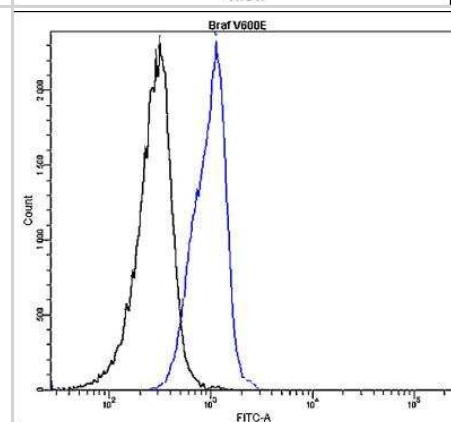


Images

Flow Cytometry: B-Raf Antibody (K21-F) - V600-E Mutation - BSA Free [NBP2-61221] - Profile of B-raf, V600-E expression in human HT29 cell line analyzed by the BD FACSCanto II. HT29 cells and blood cells were fixed, permeabilized and stained with anti-B-raf, V600-E FITC (green or blue; used 10 ul for HT29 and 4 ul for lymphocytes per test) or with an isotype control (black).



Flow Cytometry: B-Raf Antibody (K21-F) - V600-E Mutation - BSA Free [NBP2-61221] - Profile of B-raf, V600-E expression in human peripheral blood lymphocytes of patient with chronic lymphocytic leukemia. analyzed by the BD FACSCanto II. HT29 cells and blood cells were fixed, permeabilized and stained with anti-B-raf, V600-E FITC (green or blue; used 10 ul for HT29 and 4 ul for lymphocytes per test) or with an isotype control (black).





Novus Biologicals USA

10730 E. Briarwood Avenue
Centennial, CO 80112
USA
Phone: 303.730.1950
Toll Free: 1.888.506.6887
Fax: 303.730.1966
nb-customerservice@bio-techne.com

Bio-Techne Canada

21 Canmotor Ave
Toronto, ON M8Z 4E6
Canada
Phone: 905.827.6400
Toll Free: 855.668.8722
Fax: 905.827.6402
canada.inquires@bio-techne.com

Bio-Techne Ltd

19 Barton Lane
Abingdon Science Park
Abingdon, OX14 3NB, United Kingdom
Phone: (44) (0) 1235 529449
Free Phone: 0800 37 34 15
Fax: (44) (0) 1235 533420
info.EMEA@bio-techne.com

General Contact Information

www.novusbio.com
Technical Support: nb-technical@bio-
techne.com
Orders: nb-customerservice@bio-techne.com
General: novus@novusbio.com

Limitations

This product is for research use only and is not approved for use in humans or in clinical diagnosis. Primary Antibodies are guaranteed for 1 year from date of receipt.

For more information on our 100% guarantee, please visit www.novusbio.com/guarantee

Earn gift cards/discounts by submitting a review: www.novusbio.com/reviews/submit/NBP2-61221

Earn gift cards/discounts by submitting a publication using this product:
www.novusbio.com/publications

