

# Product Datasheet

## PLC-gamma 2 Antibody (2D9E8) - BSA Free NBP2-52536-0.025mg

Unit Size: 0.025 mg

Store at 4C short term. Aliquot and store at -20C long term. Avoid freeze-thaw cycles.

[www.novusbio.com](http://www.novusbio.com)



[technical@novusbio.com](mailto:technical@novusbio.com)

Protocols, Publications, Related Products, Reviews, Research Tools and Images at:  
[www.novusbio.com/NBP2-52536](http://www.novusbio.com/NBP2-52536)

Updated 4/3/2022 v.20.1

Earn rewards for product  
reviews and publications.

Submit a publication at [www.novusbio.com/publications](http://www.novusbio.com/publications)

Submit a review at [www.novusbio.com/reviews/destination/NBP2-52536](http://www.novusbio.com/reviews/destination/NBP2-52536)



**NBP2-52536-0.025mg**

PLC-gamma 2 Antibody (2D9E8) - BSA Free

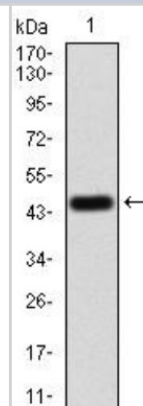
Product Information	
Unit Size	0.025 mg
Concentration	1 mg/ml
Storage	Store at 4C short term. Aliquot and store at -20C long term. Avoid freeze-thaw cycles.
Clonality	Monoclonal
Clone	2D9E8
Preservative	0.05% Sodium Azide
Isotype	IgG1
Purity	Protein A or G purified
Buffer	PBS
Target Molecular Weight	147.9 kDa

Product Description	
Host	Mouse
Gene ID	5336
Gene Symbol	PLCG2
Species	Human
Immunogen	Purified recombinant fragment of human PLCG2 (AA: 826-985) expressed in E. Coli.

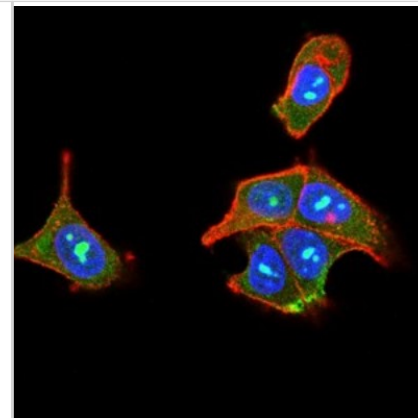
Product Application Details	
Applications	Western Blot, ELISA, Flow Cytometry, Immunocytochemistry/Immunofluorescence, CyTOF-ready
Recommended Dilutions	Western Blot 1:500-1:2000, Flow Cytometry 1:200-1:400, ELISA 1:10000, Immunocytochemistry/Immunofluorescence 1:200-1:1000, CyTOF-ready
Application Notes	This antibody is Cytof ready.

**Images**

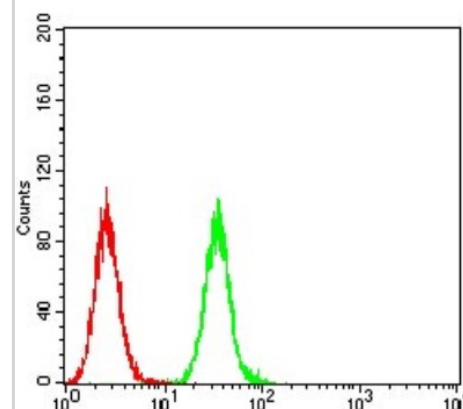
Western Blot: PLC-gamma 2 Antibody (2D9E8) [NBP2-52536] - Analysis using PLCG2 mAb against human PLCG2 (AA: 826-985) recombinant protein. (Expected MW is 44.6 kDa)



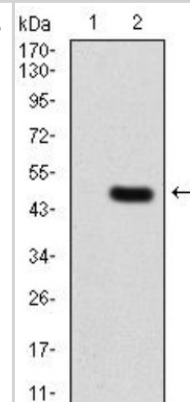
Immunocytochemistry/Immunofluorescence: PLC-gamma 2 Antibody (2D9E8) [NBP2-52536] - Analysis of MCF-7 cells using PLCG2 mouse mAb (green). Blue: DRAQ5 fluorescent DNA dye. Red: Actin filaments have been labeled with Alexa Fluor- 555 phalloidin.



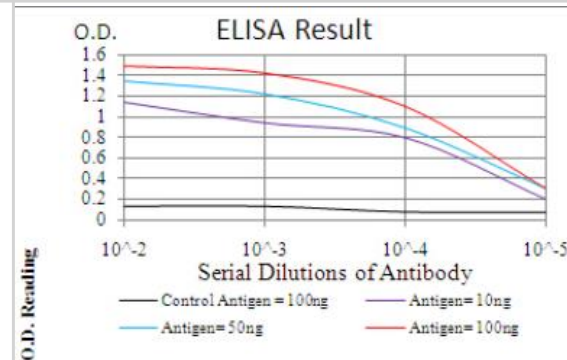
Flow Cytometry: PLC-gamma 2 Antibody (2D9E8) [NBP2-52536] - Analysis of Hela cells using PLCG2 mouse mAb (green) and negative control (red).



Western Blot: PLC-gamma 2 Antibody (2D9E8) [NBP2-52536] - Analysis using PLCG2 mAb against HEK293 (1) and PLCG2 (AA: 826-985)-hlgGfc transfected HEK293 (2) cell lysate.



ELISA: PLC-gamma 2 Antibody (2D9E8) [NBP2-52536] - Black line: Control Antigen (100 ng); Purple line: Antigen(10ng); Blue line: Antigen (50 ng); Red line: Antigen (100 ng).





### **Novus Biologicals USA**

10730 E. Briarwood Avenue  
Centennial, CO 80112  
USA

Phone: 303.730.1950  
Toll Free: 1.888.506.6887  
Fax: 303.730.1966  
novus@novusbio.com

### **Bio-Techne Canada**

21 Canmotor Ave  
Toronto, ON M8Z 4E6  
Canada

Phone: 905.827.6400  
Toll Free: 855.668.8722  
Fax: 905.827.6402  
canada.inquires@bio-techne.com

### **Bio-Techne Ltd**

19 Barton Lane  
Abingdon Science Park  
Abingdon, OX14 3NB, United Kingdom  
Phone: (44) (0) 1235 529449  
Free Phone: 0800 37 34 15  
Fax: (44) (0) 1235 533420  
info.EMEA@bio-techne.com

### **General Contact Information**

www.novusbio.com  
Technical Support: technical@novusbio.com  
Orders: orders@novusbio.com  
General: novus@novusbio.com

### **Limitations**

This product is for research use only and is not approved for use in humans or in clinical diagnosis. Primary Antibodies are guaranteed for 1 year from date of receipt.

For more information on our 100% guarantee, please visit [www.novusbio.com/guarantee](http://www.novusbio.com/guarantee)

Earn gift cards/discounts by submitting a review: [www.novusbio.com/reviews/submit/NBP2-52536](http://www.novusbio.com/reviews/submit/NBP2-52536)

Earn gift cards/discounts by submitting a publication using this product:  
[www.novusbio.com/publications](http://www.novusbio.com/publications)

