

Product Datasheet

IFN Induced GTPase-like Protein Antibody NBP2-44169-0.05ml

Unit Size: 0.05 ml

Store at -20C short term. Aliquot and store at -80C long term. Avoid freeze-thaw cycles.

www.novusbio.com



technical@novusbio.com

Protocols, Publications, Related Products, Reviews, Research Tools and Images at:
www.novusbio.com/NBP2-44169

Updated 7/23/2023 v.20.1

Earn rewards for product
reviews and publications.

Submit a publication at www.novusbio.com/publications

Submit a review at www.novusbio.com/reviews/destination/NBP2-44169



NBP2-44169-0.05ml**IFN Induced GTPase-like Protein Antibody**

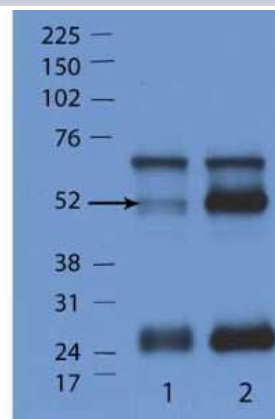
| Product Information | |
|----------------------------|---|
| Unit Size | 0.05 ml |
| Concentration | Please see the vial label for concentration. If unlisted please contact technical services. |
| Storage | Store at -20C short term. Aliquot and store at -80C long term. Avoid freeze-thaw cycles. |
| Clonality | Polyclonal |
| Preservative | 0.01% Sodium Azide |
| Isotype | IgG |
| Purity | Delipidation and Defibrination |
| Buffer | 0.02 M Potassium Phosphate, 0.5 M Sodium Chloride, pH 7.2 |

| Product Description | |
|----------------------------|--|
| Description | <p>This antibody was prepared from monospecific, delipidated and defibrinated antiserum, with addition of sodium azide to 0.01%</p> <p>Store vial at -20C prior to opening. Aliquot contents and freeze at -20C or below for extended storage. Avoid cycles of freezing and thawing. Centrifuge product if not completely clear after standing at room temperature. This product is stable for several weeks at 4C as an undiluted liquid. Dilute only prior to immediate use.</p> |
| Host | Rabbit |
| Gene ID | 225594 |
| Gene Symbol | Gm4841 |
| Species | Mouse |
| Reactivity Notes | Reactivity against homologues from other sources is not known |
| Immunogen | IFN Induced GTPase-like Protein Protein was prepared from whole rabbit serum produced by repeated immunizations with a synthetic peptide corresponding to a N-terminal region of mouse IFN Induced GTPase-like Protein Protein. (Uniprot: E9QAA8) |

| Product Application Details | |
|------------------------------------|---|
| Applications | Western Blot, ELISA |
| Recommended Dilutions | Western Blot 1:1000, ELISA 1:2000-1:10000 |
| Application Notes | This product has been tested by ELISA and Western Blot. Expect a band at ~48 kDa by western blotting in the appropriate cell lysate or extract. |

Images

Western Blot: IFN Induced GTPase-like Protein Antibody [NBP2-44169] -
lane 1: WT mouse. Lane 2: IFN gamma gene KO mouse. Load: 35 Ug
per lane.





Novus Biologicals USA

10730 E. Briarwood Avenue
Centennial, CO 80112
USA
Phone: 303.730.1950
Toll Free: 1.888.506.6887
Fax: 303.730.1966
novus@novusbio.com

Bio-Techne Canada

21 Canmotor Ave
Toronto, ON M8Z 4E6
Canada
Phone: 905.827.6400
Toll Free: 855.668.8722
Fax: 905.827.6402
canada.inquires@bio-techne.com

Bio-Techne Ltd

19 Barton Lane
Abingdon Science Park
Abingdon, OX14 3NB, United Kingdom
Phone: (44) (0) 1235 529449
Free Phone: 0800 37 34 15
Fax: (44) (0) 1235 533420
info.EMEA@bio-techne.com

General Contact Information

www.novusbio.com
Technical Support: technical@novusbio.com
Orders: orders@novusbio.com
General: novus@novusbio.com

Products Related to NBP2-44169-0.05ml

| | |
|------------|---|
| HAF008 | Goat anti-Rabbit IgG Secondary Antibody [HRP] |
| NB7160 | Goat anti-Rabbit IgG (H+L) Secondary Antibody [HRP] |
| NBP2-24891 | Rabbit IgG Isotype Control |

Limitations

This product is for research use only and is not approved for use in humans or in clinical diagnosis. Primary Antibodies are guaranteed for 1 year from date of receipt.

For more information on our 100% guarantee, please visit www.novusbio.com/guarantee

Earn gift cards/discounts by submitting a review: www.novusbio.com/reviews/submit/NBP2-44169

Earn gift cards/discounts by submitting a publication using this product:
www.novusbio.com/publications

