

Product Datasheet

Luciferase Antibody - BSA Free

NBP2-44165-0.5ml

Unit Size: 0.5 ml

Store at -20C. Avoid freeze-thaw cycles.

www.novusbio.com



technical@novusbio.com

Protocols, Publications, Related Products, Reviews, Research Tools and Images at:
www.novusbio.com/NBP2-44165

Updated 2/23/2025 v.20.1

Earn rewards for product
reviews and publications.

Submit a publication at www.novusbio.com/publications

Submit a review at www.novusbio.com/reviews/destination/NBP2-44165



NBP2-44165-0.5ml

Luciferase Antibody - BSA Free

Product Information	
Unit Size	0.5 ml
Concentration	Please see the vial label for concentration. If unlisted please contact technical services.
Storage	Store at -20C. Avoid freeze-thaw cycles.
Clonality	Polyclonal
Preservative	0.01% Sodium Azide
Isotype	Serum
Purity	Delipidation and Defibrination
Buffer	0.02 M Potassium Phosphate, 0.15 M Sodium Chloride, pH 7.2

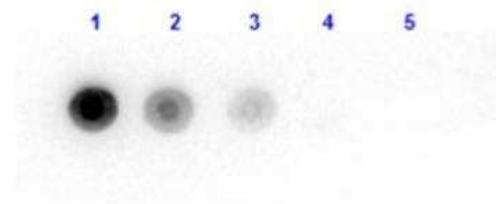
Product Description	
Description	<p>This product was prepared from monospecific antiserum by a delipidation and defibrination. Assay by immunoelectrophoresis resulted in a single precipitin arc against anti-rabbit serum, purified and partially purified Luciferase [Photobacterium fischerii]</p> <p>Store vial at 4C prior to restoration. For extended storage aliquot contents and freeze at -20C or below. Avoid cycles of freezing and thawing. Centrifuge product if not completely clear after standing at room temperature. This product is stable for several weeks at 4C as an undiluted liquid. Dilute only prior to immediate use.</p>
Host	Rabbit
Species	Bacteria
Reactivity Notes	Aliivibrio fischeri (Vibrio) Photobacterium Cross reactivity against Luciferase from other tissues and species may occur but have not been specifically determined
Immunogen	Luciferase [Photobacterium fischerii] (Uniprot: P19907)

Product Application Details	
Applications	Western Blot, Dot Blot, ELISA, Immunohistochemistry, Immunoprecipitation
Recommended Dilutions	Western Blot 1:1000-1:5000, ELISA 1:5000-1:25000, Immunohistochemistry 1:500-1:2500, Immunoprecipitation 1:100, Dot Blot
Application Notes	This product has been tested by dot blot and is suitable for western blotting, immunohistochemistry, immunoprecipitation, and ELISA. Researchers should determine optimal titers for applications that are not stated below.



Images

Dot Blot: Luciferase Antibody [NBP2-44165] - Dot Blot results of Rabbit anti-Luciferase Antibody. Dots are Luciferase (*Photobacterium fischerii*) at (1) 100ng, (2) 33.3ng, (3) 11.1ng, (4) 3.70ng, (5) 1.23ng. Primary Antibody: Rabbit anti-Luciferase. Secondary Antibody: Goat Anti-Rabbit IgG HRP.





Novus Biologicals USA

10730 E. Briarwood Avenue
Centennial, CO 80112
USA
Phone: 303.730.1950
Toll Free: 1.888.506.6887
Fax: 303.730.1966
nb-customerservice@bio-techne.com

Bio-Techne Canada

21 Canmotor Ave
Toronto, ON M8Z 4E6
Canada
Phone: 905.827.6400
Toll Free: 855.668.8722
Fax: 905.827.6402
canada.inquires@bio-techne.com

Bio-Techne Ltd

19 Barton Lane
Abingdon Science Park
Abingdon, OX14 3NB, United Kingdom
Phone: (44) (0) 1235 529449
Free Phone: 0800 37 34 15
Fax: (44) (0) 1235 533420
info.EMEA@bio-techne.com

General Contact Information

www.novusbio.com
Technical Support: nb-technical@bio-techne.com
Orders: nb-customerservice@bio-techne.com
General: novus@novusbio.com

Products Related to NBP2-44165-0.5ml

HAF008	Goat anti-Rabbit IgG Secondary Antibody [HRP]
NB7160	Goat anti-Rabbit IgG (H+L) Secondary Antibody [HRP]
NBP1-48355-0.1mg	Recombinant Firefly Luciferase His Protein
NBP2-59648-20ug	Recombinant Renilla reniformis Luciferase His (N-Term) Protein

Limitations

This product is for research use only and is not approved for use in humans or in clinical diagnosis. Primary Antibodies are guaranteed for 1 year from date of receipt.

For more information on our 100% guarantee, please visit www.novusbio.com/guarantee

Earn gift cards/discounts by submitting a review: www.novusbio.com/reviews/submit/NBP2-44165

Earn gift cards/discounts by submitting a publication using this product:
www.novusbio.com/publications

