

Product Datasheet

Mcl-1 Antibody - BSA Free NBP2-31120SS

Unit Size: 0.025 mg

Store at 4C short term. Aliquot and store at -20C long term. Avoid freeze-thaw cycles.

www.novusbio.com



technical@novusbio.com

Protocols, Publications, Related Products, Reviews, Research Tools and Images at:
www.novusbio.com/NBP2-31120

Updated 6/13/2024 v.20.1

Earn rewards for product
reviews and publications.

Submit a publication at www.novusbio.com/publications

Submit a review at www.novusbio.com/reviews/destination/NBP2-31120



NBP2-31120SS

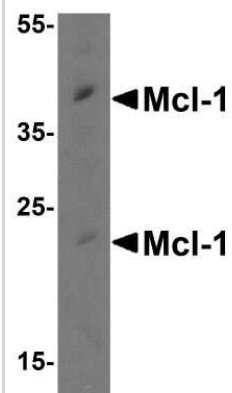
Mcl-1 Antibody - BSA Free

| Product Information | |
|-----------------------------|---|
| Unit Size | 0.025 mg |
| Concentration | 1.0 mg/ml |
| Storage | Store at 4C short term. Aliquot and store at -20C long term. Avoid freeze-thaw cycles. |
| Clonality | Polyclonal |
| Preservative | 0.02% Sodium Azide |
| Isotype | IgG |
| Purity | Peptide affinity purified |
| Buffer | PBS |
| Target Molecular Weight | 39 kDa |
| Product Description | |
| Host | Rabbit |
| Gene ID | 4170 |
| Gene Symbol | MCL1 |
| Species | Human, Mouse, Rat |
| Specificity/Sensitivity | This Mcl-1 antibody detects isoforms Mcl-1L and Mcl-1ES. |
| Immunogen | Antibody was raised against a peptide corresponding to 16 amino acids near the carboxy terminus of human Mcl-1. The immunogen is located within amino acids 220 - 270 of Mcl-1. Amino Acid Sequence: RKLDIKNEDDVKSLSR |
| Product Application Details | |
| Applications | Western Blot, ELISA, Immunocytochemistry/ Immunofluorescence |
| Recommended Dilutions | Western Blot 1 - 2 ug/ml, ELISA, Immunocytochemistry/ Immunofluorescence 2-10 ug/mL |

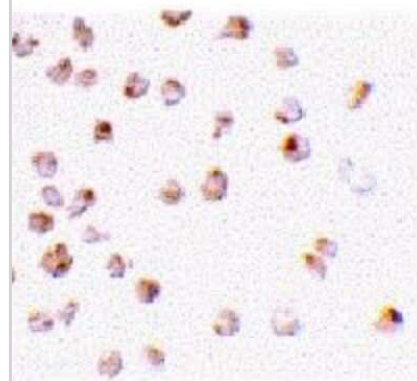


Images

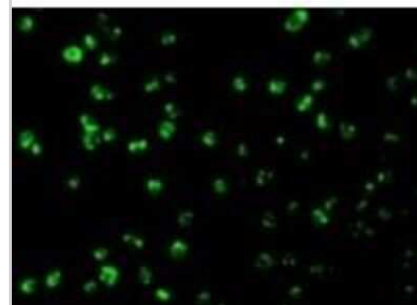
Western Blot: Mcl-1 Antibody [NBP2-31120] - Analysis in Raji cell lysate with antibody at 0.5 ug/mL.



Immunocytochemistry/Immunofluorescence: Mcl-1 Antibody [NBP2-31120] - Staining of Raji cells at 2 ug/mL.



Immunocytochemistry/Immunofluorescence: Mcl-1 Antibody [NBP2-31120] - Raji cells at 10 ug/mL





Novus Biologicals USA

10730 E. Briarwood Avenue
Centennial, CO 80112
USA
Phone: 303.730.1950
Toll Free: 1.888.506.6887
Fax: 303.730.1966
nb-customerservice@bio-techne.com

Bio-Techne Canada

21 Canmotor Ave
Toronto, ON M8Z 4E6
Canada
Phone: 905.827.6400
Toll Free: 855.668.8722
Fax: 905.827.6402
canada.inquires@bio-techne.com

Bio-Techne Ltd

19 Barton Lane
Abingdon Science Park
Abingdon, OX14 3NB, United Kingdom
Phone: (44) (0) 1235 529449
Free Phone: 0800 37 34 15
Fax: (44) (0) 1235 533420
info.EMEA@bio-techne.com

General Contact Information

www.novusbio.com
Technical Support: nb-technical@bio-
techne.com
Orders: nb-customerservice@bio-techne.com
General: novus@novusbio.com

Limitations

This product is for research use only and is not approved for use in humans or in clinical diagnosis. Primary Antibodies are guaranteed for 1 year from date of receipt.

For more information on our 100% guarantee, please visit www.novusbio.com/guarantee

Earn gift cards/discounts by submitting a review: www.novusbio.com/reviews/submit/NBP2-31120

Earn gift cards/discounts by submitting a publication using this product:
www.novusbio.com/publications

