

# Product Datasheet

## **Gliadin peptide Antibody (14D5) - BSA Free NBP2-23580-0.1ml**

Unit Size: 0.1 ml

Store at 4C in the dark.

[www.novusbio.com](http://www.novusbio.com)



[technical@novusbio.com](mailto:technical@novusbio.com)

Protocols, Publications, Related Products, Reviews, Research Tools and Images at:  
[www.novusbio.com/NBP2-23580](http://www.novusbio.com/NBP2-23580)

Updated 3/30/2022 v.20.1

**Earn rewards for product  
reviews and publications.**

Submit a publication at [www.novusbio.com/publications](http://www.novusbio.com/publications)

Submit a review at [www.novusbio.com/reviews/destination/NBP2-23580](http://www.novusbio.com/reviews/destination/NBP2-23580)



**NBP2-23580-0.1ml**

Gliadin peptide Antibody (14D5) - BSA Free

**Product Information**

<b>Unit Size</b>	0.1 ml
<b>Concentration</b>	1 mg/ml
<b>Storage</b>	Store at 4C in the dark.
<b>Clonality</b>	Monoclonal
<b>Clone</b>	14D5
<b>Preservative</b>	0.05% Sodium Azide
<b>Isotype</b>	IgG2a Lambda
<b>Purity</b>	Protein A or G purified
<b>Buffer</b>	10mM Phosphate (pH 7.4) and 0.5M NaCl

**Product Description**

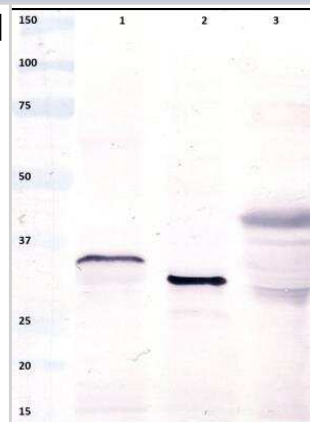
<b>Host</b>	Mouse
<b>Species</b>	Plant
<b>Reactivity Notes</b>	Wheat
<b>Specificity/Sensitivity</b>	Clone 14D5 reacts strongly with the deamidated peptide but cross-reacts about 5% with the non-deamidated peptide KLQPFQPQLPYPQPQ.
<b>Immunogen</b>	Gliadin-related peptide Lys57-Glu65-[alpha-gliadin (58-73)] (KLQPFQPQLPYPQPQ) adsorbed onto aluminum hydroxide gel

**Product Application Details**

<b>Applications</b>	Western Blot, ELISA
<b>Recommended Dilutions</b>	Western Blot 1:100-1:2000, ELISA 1:100-1:2000
<b>Application Notes</b>	Clone 14D5 reacts with both the deamidated peptide (KLQPFQPQLPYPQPQ) and non-deamidated peptide (KLQPFQPQLPYPQPQ) when these are coated directly in an immunoplate, but approx. 20-fold higher concentrations of antibody are needed to produce the same signal with the non-deamidated peptide. Sandwich ELISA is not recommended for this product, please use direct ELISA.

**Images**

Western Blot: Gliadin peptide Antibody (14D5) - BSA Free [NBP2-23580] - Analysis of Gliadin peptide measured in rye (lane 1), barley (lane 2) and wheat (lane 3). The SDS gel was run under reducing conditions.





### **Novus Biologicals USA**

10730 E. Briarwood Avenue  
Centennial, CO 80112  
USA

Phone: 303.730.1950  
Toll Free: 1.888.506.6887  
Fax: 303.730.1966  
novus@novusbio.com

### **Bio-Techne Canada**

21 Canmotor Ave  
Toronto, ON M8Z 4E6  
Canada

Phone: 905.827.6400  
Toll Free: 855.668.8722  
Fax: 905.827.6402  
canada.inquires@bio-techne.com

### **Bio-Techne Ltd**

19 Barton Lane  
Abingdon Science Park  
Abingdon, OX14 3NB, United Kingdom  
Phone: (44) (0) 1235 529449  
Free Phone: 0800 37 34 15  
Fax: (44) (0) 1235 533420  
info.EMEA@bio-techne.com

### **General Contact Information**

www.novusbio.com  
Technical Support: technical@novusbio.com  
Orders: orders@novusbio.com  
General: novus@novusbio.com

### **Limitations**

This product is for research use only and is not approved for use in humans or in clinical diagnosis. Primary Antibodies are guaranteed for 1 year from date of receipt.

For more information on our 100% guarantee, please visit [www.novusbio.com/guarantee](http://www.novusbio.com/guarantee)

Earn gift cards/discounts by submitting a review: [www.novusbio.com/reviews/submit/NBP2-23580](http://www.novusbio.com/reviews/submit/NBP2-23580)

Earn gift cards/discounts by submitting a publication using this product:  
[www.novusbio.com/publications](http://www.novusbio.com/publications)

