

# Product Datasheet

## GLP1 Antibody (8G9) - BSA Free NBP2-23506-0.1ml

Unit Size: 0.1 ml

Store at 4C. Do not freeze.

[www.novusbio.com](http://www.novusbio.com)



[technical@novusbio.com](mailto:technical@novusbio.com)

Protocols, Publications, Related Products, Reviews, Research Tools and Images at:  
[www.novusbio.com/NBP2-23506](http://www.novusbio.com/NBP2-23506)

Updated 5/23/2024 v.20.1

Earn rewards for product  
reviews and publications.

Submit a publication at [www.novusbio.com/publications](http://www.novusbio.com/publications)

Submit a review at [www.novusbio.com/reviews/destination/NBP2-23506](http://www.novusbio.com/reviews/destination/NBP2-23506)



**NBP2-23506-0.1ml**

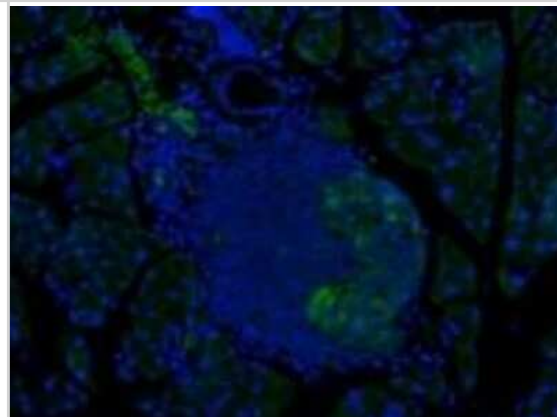
GLP1 Antibody (8G9) - BSA Free

Product Information	
Unit Size	0.1 ml
Concentration	1 mg/ml
Storage	Store at 4C. Do not freeze.
Clonality	Monoclonal
Clone	8G9
Preservative	0.9% Sodium Azide
Isotype	IgG1 Kappa
Purity	Protein A or G purified
Buffer	10mM Phosphate (pH 7.4) and 0.5M NaCl
Product Description	
Host	Mouse
Gene ID	2641
Gene Symbol	GCG
Species	Human, Mouse, Mammal
Reactivity Notes	Mammal. Please note that this antibody is reactive to Mouse and derived from the same host, Mouse. Additional Mouse on Mouse blocking steps may be required for IHC and ICC experiments. Please contact Technical Support for more information.
Specificity/Sensitivity	Clone 8G9 is specific for the amidated C-terminus of the peptide and does not react with GLP-1(7-37)
Immunogen	Synthetic GLP-1(7-36)amide coupled to carrier and adsorbed onto aluminum hydroxide gel
Product Application Details	
Applications	ELISA, Immunocytochemistry/ Immunofluorescence, Immunohistochemistry, Sandwich ELISA Detection
Recommended Dilutions	ELISA 1:100-1:2000, Immunohistochemistry 1:10-1:500, Immunocytochemistry/ Immunofluorescence 1:10-1:500, Sandwich ELISA Detection
Application Notes	Clone 8G9 reacts with the amidated C-terminus of GLP-1(7-36)amide, GLP-1(9-36)amide and GLP-1(1-36)amide. Clone 8G9 can be used as capture antibody in sandwich ELISA using 4F3 or Clone 10 as detection antibody. Clone 8G9 has been used for the immunoblockade of endogenous GLP-1 in rats .

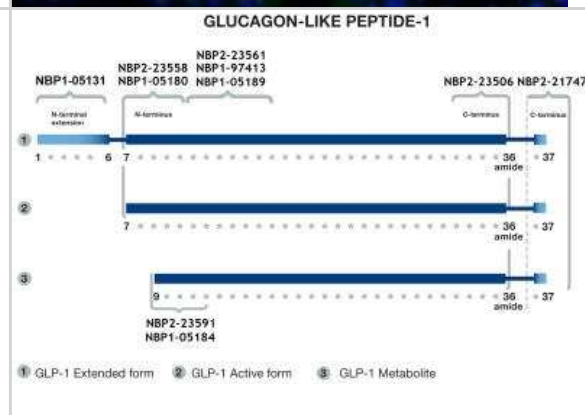


## Images

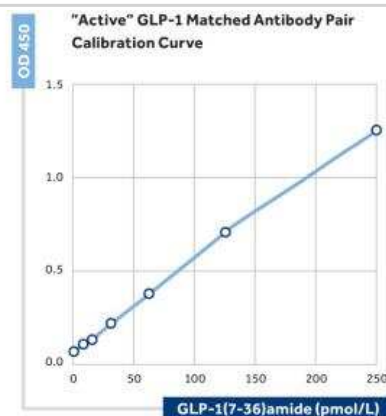
Immunocytochemistry/Immunofluorescence: Glucagon Antibody (8G9) - BSA Free [NBP2-23506] - Pancreas sections from diabetic mice stained with GLP1 antibody (1:500). Courtesy of Dr. Annette Plesner, University of British Columbia



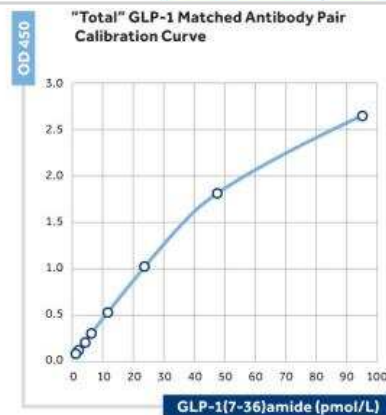
Glucagon Antibody (8G9) - BSA Free [NBP2-23506] - BSA Free [NBP2-23506]



Sandwich ELISA Detection: Glucagon Antibody (8G9) - BSA Free [NBP2-23506] - The calibration curve with NBP2-23506 being the capture antibody and NBP2-23557 as the biotinylated detection antibody.



Sandwich ELISA Detection: Glucagon Antibody (8G9) - BSA Free [NBP2-23506] - Calibration curve using NBP2-23506 as the capture antibody and NBP2-23560 as the biotinylated detection antibody.





### **Novus Biologicals USA**

10730 E. Briarwood Avenue  
Centennial, CO 80112  
USA  
Phone: 303.730.1950  
Toll Free: 1.888.506.6887  
Fax: 303.730.1966  
nb-customerservice@bio-techne.com

### **Bio-Techne Canada**

21 Canmotor Ave  
Toronto, ON M8Z 4E6  
Canada  
Phone: 905.827.6400  
Toll Free: 855.668.8722  
Fax: 905.827.6402  
canada.inquires@bio-techne.com

### **Bio-Techne Ltd**

19 Barton Lane  
Abingdon Science Park  
Abingdon, OX14 3NB, United Kingdom  
Phone: (44) (0) 1235 529449  
Free Phone: 0800 37 34 15  
Fax: (44) (0) 1235 533420  
info.EMEA@bio-techne.com

### **General Contact Information**

[www.novusbio.com](http://www.novusbio.com)  
Technical Support: nb-technical@bio-techne.com  
Orders: nb-customerservice@bio-techne.com  
General: novus@novusbio.com

### **Limitations**

This product is for research use only and is not approved for use in humans or in clinical diagnosis. Primary Antibodies are guaranteed for 1 year from date of receipt.

For more information on our 100% guarantee, please visit [www.novusbio.com/guarantee](http://www.novusbio.com/guarantee)

Earn gift cards/discounts by submitting a review: [www.novusbio.com/reviews/submit/NBP2-23506](http://www.novusbio.com/reviews/submit/NBP2-23506)

Earn gift cards/discounts by submitting a publication using this product:  
[www.novusbio.com/publications](http://www.novusbio.com/publications)

