

Product Datasheet

SSEA-1 Antibody (4E10) - BSA Free NBP2-22179-0.025ml

Unit Size: 0.025 ml

Store at 4C short term. Aliquot and store at -20C long term. Avoid freeze-thaw cycles.

www.novusbio.com



technical@novusbio.com

Publications: 3

Protocols, Publications, Related Products, Reviews, Research Tools and Images at:
www.novusbio.com/NBP2-22179

Updated 10/23/2024 v.20.1

Earn rewards for product
reviews and publications.

Submit a publication at www.novusbio.com/publications

Submit a review at www.novusbio.com/reviews/destination/NBP2-22179



NBP2-22179-0.025ml

SSEA-1 Antibody (4E10) - BSA Free

Product Information	
Unit Size	0.025 ml
Concentration	This product is unpurified. The exact concentration of antibody is not quantifiable.
Storage	Store at 4C short term. Aliquot and store at -20C long term. Avoid freeze-thaw cycles.
Clonality	Monoclonal
Clone	4E10
Preservative	0.03% Sodium Azide
Isotype	IgG1
Purity	Unpurified
Buffer	Ascites
Target Molecular Weight	59 kDa

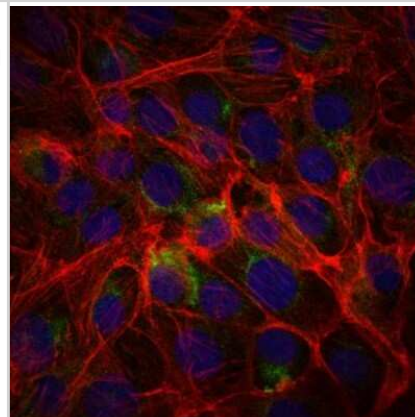
Product Description	
Host	Mouse
Gene ID	2526
Gene Symbol	FUT4
Species	Human
Immunogen	Synthesized peptide of human SSEA-1.

Product Application Details	
Applications	ELISA, Flow Cytometry, Immunocytochemistry/ Immunofluorescence, Immunohistochemistry, Immunohistochemistry-Frozen, Immunohistochemistry-Paraffin
Recommended Dilutions	Flow Cytometry, ELISA 1:10000, Immunohistochemistry 1:10-1:500, Immunocytochemistry/ Immunofluorescence 1:200-1:1000, Immunohistochemistry-Paraffin 1:200-1:1000, Immunohistochemistry-Frozen
Application Notes	Use in FLOW reported in scientific literature (PMID: 30344930). Use in IHC-Fr reported in scitific publication PMID: 32646856

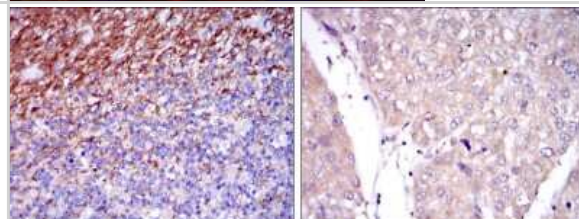


Images

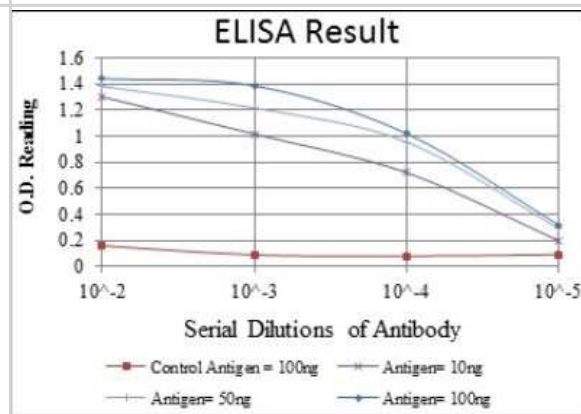
Immunocytochemistry/Immunofluorescence: CD15/Lewis X Antibody (4E10) [NBP2-22179] - Immunofluorescence analysis of PC-2 cells using CD15 mouse mAb (green). Blue: DRAQ5 fluorescent DNA dye. Red: Actin filaments have been labeled with Alexa Fluor-555 phalloidin.



Immunohistochemistry-Paraffin: CD15/Lewis X Antibody (4E10) [NBP2-22179] - Immunohistochemical analysis of paraffin-embedded human cerebellum tissues (left) and human liver cancer tissues (right) using CD15 mouse mAb with DAB staining.



ELISA: CD15/Lewis X Antibody (4E10) [NBP2-22179] - Red: Control Antigen (100ng); Purple: Antigen (10ng); Green: Antigen (50ng); Blue: Antigen (100ng)



Publications

Chen W, Li W, Zhang Z et al. Lipocalin-2 Exacerbates Lupus Nephritis by Promoting Th1 Cell Differentiation J. Am. Soc. Nephrol. 2020-07-09 [PMID: 32646856] (IHC-Fr)

Cuello HA, Segatori VI, Alberto M et al. Aberrant O-glycosylation modulates aggressiveness in neuroblastoma. Oncotarget. 2018-09-25 [PMID: 30344930] (FLOW, Human)

Ellis CN, LaRocque RC, Uddin T et al. Comparative Proteomic Analysis Reveals Activation of Mucosal Innate Immune Signaling Pathways during Cholera. Infect Immun 2015-03-01 [PMID: 25561705] (IHC-P, Human)



Novus Biologicals USA

10730 E. Briarwood Avenue
Centennial, CO 80112
USA
Phone: 303.730.1950
Toll Free: 1.888.506.6887
Fax: 303.730.1966
nb-customerservice@bio-techne.com

Bio-Techne Canada

21 Canmotor Ave
Toronto, ON M8Z 4E6
Canada
Phone: 905.827.6400
Toll Free: 855.668.8722
Fax: 905.827.6402
canada.inquires@bio-techne.com

Bio-Techne Ltd

19 Barton Lane
Abingdon Science Park
Abingdon, OX14 3NB, United Kingdom
Phone: (44) (0) 1235 529449
Free Phone: 0800 37 34 15
Fax: (44) (0) 1235 533420
info.EMEA@bio-techne.com

General Contact Information

www.novusbio.com
Technical Support: nb-technical@bio-
techne.com
Orders: nb-customerservice@bio-techne.com
General: novus@novusbio.com

Limitations

This product is for research use only and is not approved for use in humans or in clinical diagnosis. Primary Antibodies are guaranteed for 1 year from date of receipt.

For more information on our 100% guarantee, please visit www.novusbio.com/guarantee

Earn gift cards/discounts by submitting a review: www.novusbio.com/reviews/submit/NBP2-22179

Earn gift cards/discounts by submitting a publication using this product:
www.novusbio.com/publications

