

# Product Datasheet

## Rat IgG2b Isotype Control (LF2) NBP2-21941-0.5mg

Unit Size: 0.5 mg

Aliquot and store at -20C or -80C. Avoid freeze-thaw cycles.

[www.novusbio.com](http://www.novusbio.com)



[technical@novusbio.com](mailto:technical@novusbio.com)

Protocols, Publications, Related Products, Reviews, Research Tools and Images at:  
[www.novusbio.com/NBP2-21941](http://www.novusbio.com/NBP2-21941)

Updated 10/23/2024 v.20.1

Earn rewards for product  
reviews and publications.

Submit a publication at [www.novusbio.com/publications](http://www.novusbio.com/publications)

Submit a review at [www.novusbio.com/reviews/destination/NBP2-21941](http://www.novusbio.com/reviews/destination/NBP2-21941)



**NBP2-21941-0.5mg**

Rat IgG2b Isotype Control (LF2)

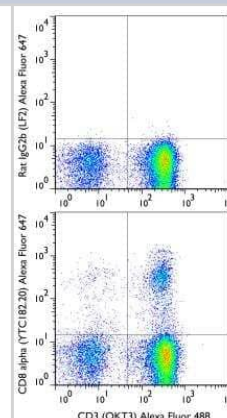
Product Information	
Unit Size	0.5 mg
Concentration	LYOPH mg/ml
Storage	Aliquot and store at -20C or -80C. Avoid freeze-thaw cycles.
Clonality	Monoclonal
Clone	LF2
Preservative	No Preservative
Reconstitution Instructions	Reconstitute with PBS.
Isotype	IgG2b
Purity	Protein A or G purified
Buffer	Lyophilized from a 0.2 um filtered solution in PBS. 0.5mg and 0.25 mg sizes are provided in liquid form, PBS

Product Description	
Description	This Rat IgG2B (LF2) immunoglobulin is useful as an isotype control for Rat IgG2B (LF2) antibody. This antibody is purified from culture supernatant of a hybridoma (Mouse myeloma fused with spleen cells from a Rat, clone LF2) with protein A/G. Endotoxin level < 0.7 EU/mg.
Host	Rat
Species	Rat

Product Application Details	
Application Notes	Use the isotype control at the same concentration as the experimental antibody. Optimal dilution of this antibody should be experimentally determined.

**Images**

Flow Cytometry: Rat IgG2B Isotype Control (LF2) [NBP2-21941] - A surface stain was performed on human peripheral blood lymphocytes with CD8 alpha (YTC128.20) antibody NB100-64922AF647 and a matched isotype control NBP2-21941AF647. Cells were incubated in an antibody dilution of 2 ug/mL for 20 minutes at room temperature. A co-stain was performed with NBP2-24867AF488.





### **Novus Biologicals USA**

10730 E. Briarwood Avenue  
Centennial, CO 80112  
USA  
Phone: 303.730.1950  
Toll Free: 1.888.506.6887  
Fax: 303.730.1966  
nb-customerservice@bio-techne.com

### **Bio-Techne Canada**

21 Canmotor Ave  
Toronto, ON M8Z 4E6  
Canada  
Phone: 905.827.6400  
Toll Free: 855.668.8722  
Fax: 905.827.6402  
canada.inquires@bio-techne.com

### **Bio-Techne Ltd**

19 Barton Lane  
Abingdon Science Park  
Abingdon, OX14 3NB, United Kingdom  
Phone: (44) (0) 1235 529449  
Free Phone: 0800 37 34 15  
Fax: (44) (0) 1235 533420  
info.EMEA@bio-techne.com

### **General Contact Information**

www.novusbio.com  
Technical Support: nb-technical@bio-techne.com  
Orders: nb-customerservice@bio-techne.com  
General: novus@novusbio.com

### **Products Related to NBP2-21941-0.5mg**

---

MAB9636-100	IgG2b Antibody (2215A) [Unconjugated]
-------------	---------------------------------------

---

### **Limitations**

This product is for research use only and is not approved for use in humans or in clinical diagnosis. Isotype Controls are guaranteed for 1 year from date of receipt.

For more information on our 100% guarantee, please visit [www.novusbio.com/guarantee](http://www.novusbio.com/guarantee)

Earn gift cards/discounts by submitting a review: [www.novusbio.com/reviews/submit/NBP2-21941](http://www.novusbio.com/reviews/submit/NBP2-21941)

Earn gift cards/discounts by submitting a publication using this product:  
[www.novusbio.com/publications](http://www.novusbio.com/publications)

