

Product Datasheet

KIR2.3 Antibody (S25-35) NBP2-12902-0.025mg

Unit Size: 0.025 mg

Store at 4C short term. Aliquot and store at -20C long term. Avoid freeze-thaw cycles.

www.novusbio.com



technical@novusbio.com

Protocols, Publications, Related Products, Reviews, Research Tools and Images at:
www.novusbio.com/NBP2-12902

Updated 6/2/2021 v.20.1

Earn rewards for product
reviews and publications.

Submit a publication at www.novusbio.com/publications

Submit a review at www.novusbio.com/reviews/destination/NBP2-12902



NBP2-12902-0.025mg

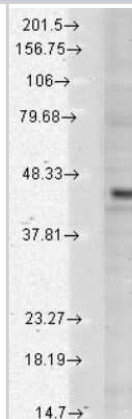
KIR2.3 Antibody (S25-35)

Product Information	
Unit Size	0.025 mg
Concentration	1 mg/ml
Storage	Store at 4C short term. Aliquot and store at -20C long term. Avoid freeze-thaw cycles.
Clonality	Monoclonal
Clone	S25-35
Preservative	0.09% Sodium Azide
Isotype	IgG1
Purity	Protein G purified
Buffer	PBS (pH 7.4), 50% Glycerol
Target Molecular Weight	45 kDa
Product Description	
Host	Mouse
Gene ID	3761
Gene Symbol	KCNJ4
Species	Human, Mouse, Rat
Specificity/Sensitivity	Detects approx 45kDa. No cross-reactivity against Kir2.1 or Kir2.2.
Immunogen	Fusion protein amino acids 390-445 of human Kir2.3
Product Application Details	
Applications	Western Blot, Immunocytochemistry/Immunofluorescence, Immunohistochemistry, Immunohistochemistry-Paraffin, Microarray
Recommended Dilutions	Western Blot 1-10 ug/ml, Immunohistochemistry, Immunocytochemistry/Immunofluorescence, Immunohistochemistry-Paraffin 0.1-1.0 ug/ml, Microarray
Application Notes	1 ug/ml of Kir2.3 Antibody was sufficient for detection of Kir2.3 in 10 ug of rat brain lysate by colorimetric immunoblot analysis using Goat anti-mouse IgG:HRP as the secondary Antibody.

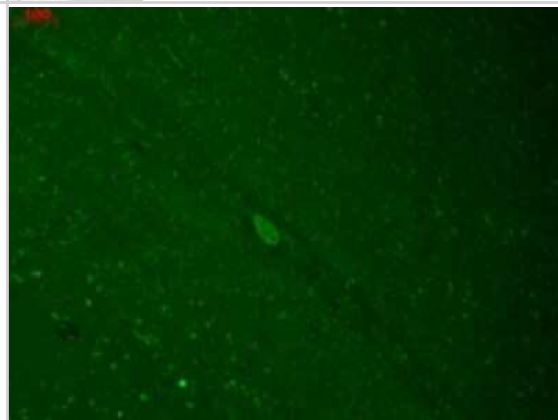


Images

Western Blot: KIR2.3 Antibody (S25-35) [NBP2-12902] - analysis of Human Cell lysates showing detection of Kir2.3 Potassium Channel protein using Mouse Anti-Kir2.3 Potassium Channel Monoclonal Antibody, Clone S25-35 . Load: 15 ug protein. Block: 1.5% BSA for 30 minutes at RT. Primary Antibody: Mouse Anti-Kir2.3 Potassium Channel Monoclonal Antibody at 1:1000 for 2 hours at RT. Secondary Antibody: Sheep Anti-Mouse IgG: HRP for 1 hour at RT.



Immunocytochemistry/Immunofluorescence: KIR2.3 Antibody (S25-35) [NBP2-12902] - human hippocampal sections using this antibody.





Novus Biologicals USA

10730 E. Briarwood Avenue
Centennial, CO 80112
USA

Phone: 303.730.1950
Toll Free: 1.888.506.6887
Fax: 303.730.1966
novus@novusbio.com

Bio-Techne Canada

21 Canmotor Ave
Toronto, ON M8Z 4E6
Canada

Phone: 905.827.6400
Toll Free: 855.668.8722
Fax: 905.827.6402
canada.inquires@bio-techne.com

Bio-Techne Ltd

19 Barton Lane
Abingdon Science Park
Abingdon, OX14 3NB, United Kingdom
Phone: (44) (0) 1235 529449
Free Phone: 0800 37 34 15
Fax: (44) (0) 1235 533420
info.EMEA@bio-techne.com

General Contact Information

www.novusbio.com
Technical Support: technical@novusbio.com
Orders: orders@novusbio.com
General: novus@novusbio.com

Limitations

This product is for research use only and is not approved for use in humans or in clinical diagnosis. Primary Antibodies are guaranteed for 1 year from date of receipt.

For more information on our 100% guarantee, please visit www.novusbio.com/guarantee

Earn gift cards/discounts by submitting a review: www.novusbio.com/reviews/submit/NBP2-12902

Earn gift cards/discounts by submitting a publication using this product:
www.novusbio.com/publications

