

Product Datasheet

Rabbit anti-Feline IgM Heavy Chain Secondary Antibody NBP1-73920-10mg

Unit Size: 10 mg

Store at -20C. Avoid freeze-thaw cycles.

www.novusbio.com



technical@novusbio.com

Protocols, Publications, Related Products, Reviews, Research Tools and Images at:
www.novusbio.com/NBP1-73920

Updated 10/23/2024 v.20.1

Earn rewards for product
reviews and publications.

Submit a publication at www.novusbio.com/publications

Submit a review at www.novusbio.com/reviews/destination/NBP1-73920

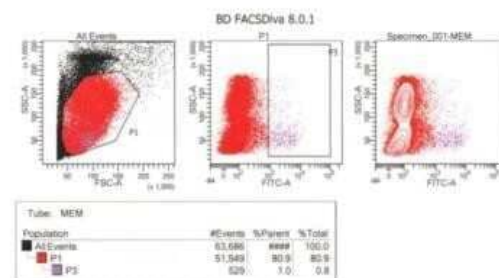


NBP1-73920-10mg**Rabbit anti-Feline IgM Heavy Chain Secondary Antibody**

Product Information	
Unit Size	10 mg
Concentration	Please see the vial label for concentration. If unlisted please contact technical services.
Storage	Store at -20C. Avoid freeze-thaw cycles.
Clonality	Polyclonal
Preservative	0.01% Sodium Azide
Isotype	IgG
Purity	Multi-step
Buffer	0.02 M Potassium Phosphate, 0.15 M Sodium Chloride, pH 7.2
Product Description	
Description	<p>This product is an IgG fraction antibody purified from monospecific antiserum by a multi-step process which includes delipidation, salt fractionation and ion exchange chromatography followed by extensive dialysis against the buffer stated above. Assay by immunoelectrophoresis resulted in a single precipitin arc against anti-Rabbit Serum, Cat IgM and Cat Serum</p> <p>Store vial at 4C prior to restoration. For extended storage aliquot contents and freeze at -20C or below. Avoid cycles of freezing and thawing. Centrifuge product if not completely clear after standing at room temperature. This product is stable for several weeks at 4C as an undiluted liquid. Dilute only prior to immediate use.</p>
Host	Rabbit
Gene ID	3507
Gene Symbol	IGHM
Species	Feline
Specificity/Sensitivity	No reaction was observed against Cat IgG.
Immunogen	Cat IgM mu heavy chain
Product Application Details	
Applications	Western Blot, ELISA, Flow Cytometry, Immunohistochemistry
Recommended Dilutions	Western Blot 1:2000 - 1:10000, Flow Cytometry, ELISA 1:20000 - 1:100000, Immunohistochemistry 1:1000 - 1:5000
Application Notes	This product is suitable for ELISA, western blot, and immunohistochemistry, as well as other assays requiring lot-to-lot consistency.

Images

Flow Cytometry: Rabbit anti-Feline IgM Heavy Chain Secondary Antibody [NBP1-73920] - Phenotyping of cat blood. Cat blood cells were washed and incubated with the antibody. It was used as a secondary antibody to check for bound IgM, in cat blood. It served as a B cell marker. This image was submitted via customer review. Image using the FITC form of this antibody.





Novus Biologicals USA

10730 E. Briarwood Avenue
Centennial, CO 80112
USA
Phone: 303.730.1950
Toll Free: 1.888.506.6887
Fax: 303.730.1966
nb-customerservice@bio-techne.com

Bio-Techne Canada

21 Canmotor Ave
Toronto, ON M8Z 4E6
Canada
Phone: 905.827.6400
Toll Free: 855.668.8722
Fax: 905.827.6402
canada.inquires@bio-techne.com

Bio-Techne Ltd

19 Barton Lane
Abingdon Science Park
Abingdon, OX14 3NB, United Kingdom
Phone: (44) (0) 1235 529449
Free Phone: 0800 37 34 15
Fax: (44) (0) 1235 533420
info.EMEA@bio-techne.com

General Contact Information

www.novusbio.com
Technical Support: nb-technical@bio-techne.com
Orders: nb-customerservice@bio-techne.com
General: novus@novusbio.com

Products Related to NBP1-73920-10mg

NB100-524	NOD2 Antibody (2D9) - BSA Free
NBP1-96772	Human IgM Heavy Chain Isotype Control
7268-CT-100	CTLA-4 [Unconjugated]
NB200-541	Complement C4b/d Antibody (16D2)

Limitations

This product is for research use only and is not approved for use in humans or in clinical diagnosis. Secondary Antibodies are guaranteed for 1 year from date of receipt.

For more information on our 100% guarantee, please visit www.novusbio.com/guarantee

Earn gift cards/discounts by submitting a review: www.novusbio.com/reviews/submit/NBP1-73920

Earn gift cards/discounts by submitting a publication using this product:
www.novusbio.com/publications

