

Product Datasheet

Aldehyde Dehydrogenase 1-A1/ALDH1A1 Antibody (5A11) - BSA Free NBP1-51654-0.025ml

Unit Size: 0.025 ml

Store at 4C short term. Aliquot and store at -20C long term. Avoid freeze-thaw cycles.

www.novusbio.com



technical@novusbio.com

Protocols, Publications, Related Products, Reviews, Research Tools and Images at:
www.novusbio.com/NBP1-51654

Updated 6/13/2024 v.20.1

Earn rewards for product
reviews and publications.

Submit a publication at www.novusbio.com/publications

Submit a review at www.novusbio.com/reviews/destination/NBP1-51654



NBP1-51654-0.025ml

Aldehyde Dehydrogenase 1-A1/ALDH1A1 Antibody (5A11) - BSA Free

| Product Information | |
|-------------------------|--|
| Unit Size | 0.025 ml |
| Concentration | This product is unpurified. The exact concentration of antibody is not quantifiable. |
| Storage | Store at 4C short term. Aliquot and store at -20C long term. Avoid freeze-thaw cycles. |
| Clonality | Monoclonal |
| Clone | 5A11 |
| Preservative | 0.03% Sodium Azide |
| Isotype | IgG1 |
| Purity | Unpurified |
| Buffer | Ascites |
| Target Molecular Weight | 55 kDa |

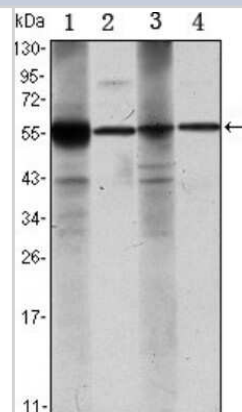
| Product Description | |
|---------------------|--|
| Host | Mouse |
| Gene ID | 216 |
| Gene Symbol | ALDH1A1 |
| Species | Human |
| Marker | Astrocyte Marker |
| Immunogen | Purified recombinant fragment of human Aldehyde Dehydrogenase 1-A1/ALDH1A1 expressed in E. Coli. |

| Product Application Details | |
|-----------------------------|---|
| Applications | Western Blot, ELISA, Immunohistochemistry, Immunohistochemistry-Paraffin |
| Recommended Dilutions | Western Blot 1:500-1:2000, ELISA 1:10000, Immunohistochemistry 1:10-1:500, Immunohistochemistry-Paraffin 1:200-1:1000 |

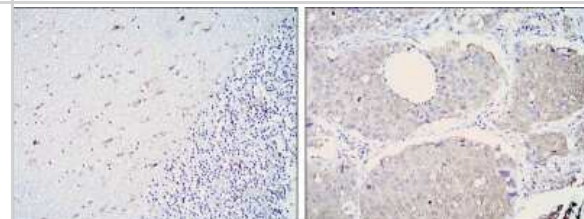


Images

Western Blot: Aldehyde Dehydrogenase 1-A1/ALDH1A1 Antibody (5A11) [NBP1-51654] - Western blot analysis using ALDH1A1 mouse mAb against Raji (1), Jurkat (2), THP-1 (3) and K562 (4) cell lysate.



Immunohistochemistry-Paraffin: Aldehyde Dehydrogenase 1-A1/ALDH1A1 Antibody (5A11) [NBP1-51654] - Immunohistochemical analysis of paraffin-embedded cerebellum tissues (left) and lung cancer (right) using ALDH1A1 mouse mAb with DAB staining.





Novus Biologicals USA

10730 E. Briarwood Avenue
Centennial, CO 80112
USA
Phone: 303.730.1950
Toll Free: 1.888.506.6887
Fax: 303.730.1966
nb-customerservice@bio-techne.com

Bio-Techne Canada

21 Canmotor Ave
Toronto, ON M8Z 4E6
Canada
Phone: 905.827.6400
Toll Free: 855.668.8722
Fax: 905.827.6402
canada.inquires@bio-techne.com

Bio-Techne Ltd

19 Barton Lane
Abingdon Science Park
Abingdon, OX14 3NB, United Kingdom
Phone: (44) (0) 1235 529449
Free Phone: 0800 37 34 15
Fax: (44) (0) 1235 533420
info.EMEA@bio-techne.com

General Contact Information

www.novusbio.com
Technical Support: nb-technical@bio-
techne.com
Orders: nb-customerservice@bio-techne.com
General: novus@novusbio.com

Limitations

This product is for research use only and is not approved for use in humans or in clinical diagnosis.
Primary Antibodies are guaranteed for 1 year from date of receipt.

For more information on our 100% guarantee, please visit www.novusbio.com/guarantee

Earn gift cards/discounts by submitting a review: www.novusbio.com/reviews/submit/NBP1-51654

Earn gift cards/discounts by submitting a publication using this product:
www.novusbio.com/publications

