

Product Datasheet

MRP1 Antibody (MRPm6)

NBP1-42340-0.5ml

Unit Size: 0.5 ml

Store at 4C. Do not freeze.

www.novusbio.com



technical@novusbio.com

Protocols, Publications, Related Products, Reviews, Research Tools and Images at:
www.novusbio.com/NBP1-42340

Updated 6/13/2024 v.20.1

Earn rewards for product
reviews and publications.

Submit a publication at www.novusbio.com/publications

Submit a review at www.novusbio.com/reviews/destination/NBP1-42340



NBP1-42340-0.5ml

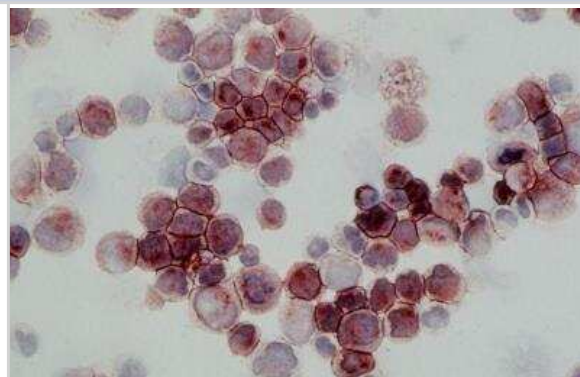
MRP1 Antibody (MRPm6)

Product Information	
Unit Size	0.5 ml
Concentration	This product is unpurified. The exact concentration of antibody is not quantifiable.
Storage	Store at 4C. Do not freeze.
Clonality	Monoclonal
Clone	MRPm6
Preservative	0.1% Sodium Azide
Isotype	IgG1
Purity	Tissue culture supernatant
Buffer	Serum free tissue culture supernatant, 0.7% BSA
Product Description	
Host	Mouse
Gene ID	4363
Gene Symbol	ABCC1
Species	Human
Specificity/Sensitivity	Reacts with an internal epitope of MRP1. Does not cross-react with the human MDR1 and MDR3 gene products
Immunogen	Raised against a bacterial fusion protein of MRP, containing a segment of 170 amino acids in the carboxy terminal end and part of the carboxy proximal nucleotide binding domain of the protein
Product Application Details	
Applications	Western Blot, Flow Cytometry, Immunohistochemistry, Immunohistochemistry-Frozen, Immunohistochemistry-Paraffin
Recommended Dilutions	Western Blot 1:20-1:50, Flow Cytometry 1:20-1:50, Immunohistochemistry 1:20-50, Immunohistochemistry-Paraffin 1:20-50, Immunohistochemistry-Frozen 1:20-50
Application Notes	MRPm6 has potential value for detection of MRP MDR in human tumor samples. Working dilutions. Flow cytometry: at least 1:20-1:50. Western blotting: at least 1:20-1:50. Immunocytochemistry: acetone fixed cell preparation at least 1:20-50. Immunohistochemistry: For use of paraffin embedded sections a 0.01M citrate pretreatment (10 min 100 degrees C) may increase the performance of this antibody. In Flow cytometry fixate cells in 10% (v/v) Lysing solution followed by primary antibody and anti-Mouse-FITC.



Images

Immunohistochemistry: MRP1 Antibody (MRPm6) [NBP1-42340]





Novus Biologicals USA

10730 E. Briarwood Avenue
Centennial, CO 80112
USA
Phone: 303.730.1950
Toll Free: 1.888.506.6887
Fax: 303.730.1966
nb-customerservice@bio-techne.com

Bio-Techne Canada

21 Canmotor Ave
Toronto, ON M8Z 4E6
Canada
Phone: 905.827.6400
Toll Free: 855.668.8722
Fax: 905.827.6402
canada.inquires@bio-techne.com

Bio-Techne Ltd

19 Barton Lane
Abingdon Science Park
Abingdon, OX14 3NB, United Kingdom
Phone: (44) (0) 1235 529449
Free Phone: 0800 37 34 15
Fax: (44) (0) 1235 533420
info.EMEA@bio-techne.com

General Contact Information

www.novusbio.com
Technical Support: nb-technical@bio-techne.com
Orders: nb-customerservice@bio-techne.com
General: novus@novusbio.com

Limitations

This product is for research use only and is not approved for use in humans or in clinical diagnosis. Primary Antibodies are guaranteed for 1 year from date of receipt.

For more information on our 100% guarantee, please visit www.novusbio.com/guarantee

Earn gift cards/discounts by submitting a review: www.novusbio.com/reviews/submit/NBP1-42340

Earn gift cards/discounts by submitting a publication using this product:
www.novusbio.com/publications

