

Product Datasheet

Fibulin-3/EFEMP1 Antibody

NB300-691-0.05mg

Unit Size: 0.05 mg

Store at 4C short term. Aliquot and store at -20C long term. Avoid freeze-thaw cycles.

www.novusbio.com



technical@novusbio.com

Protocols, Publications, Related Products, Reviews, Research Tools and Images at:
www.novusbio.com/NB300-691

Updated 10/23/2024 v.20.1

Earn rewards for product
reviews and publications.

Submit a publication at www.novusbio.com/publications

Submit a review at www.novusbio.com/reviews/destination/NB300-691



NB300-691-0.05mg

Fibulin-3/EFEMP1 Antibody

Product Information	
Unit Size	0.05 mg
Concentration	Please see the vial label for concentration. If unlisted please contact technical services.
Storage	Store at 4C short term. Aliquot and store at -20C long term. Avoid freeze-thaw cycles.
Clonality	Polyclonal
Preservative	0.02% Sodium Azide
Isotype	IgG
Purity	Immunogen affinity purified
Buffer	Tris/Glycine buffer, pH 7.4-7.8, HEPES,BSA 0.5%, glycerol 30%.

Product Description	
Host	Rabbit
Gene ID	2202
Gene Symbol	EFEMP1
Species	Human, Mouse, Rat, Monkey
Specificity/Sensitivity	The Anti EFEMP1 selective was generated against a conserved sequence near the N terminal region that is unique to EFEMP1 protein only. This detects a strong 62 kDa EFEMP1 protein in human.
Immunogen	Synthetic cyclic peptide corresponding to N terminal amino acids 25-42 of Human EFEMP1, peptide was covalently modified. Sequence: TYTQCTDGYEWDPRQQC

Product Application Details	
Applications	Western Blot, ELISA, Immunohistochemistry, Immunohistochemistry-Paraffin, Immunoprecipitation
Recommended Dilutions	Western Blot 1:500, ELISA 1:10000, Immunohistochemistry, Immunoprecipitation 1:200, Immunohistochemistry-Paraffin 1:100
Application Notes	Detects a band of approximately 62 kDa (predicted molecular weight: 60 kDa). Not tested in other applications. Optimal dilutions/concentrations should be determined by the end user.

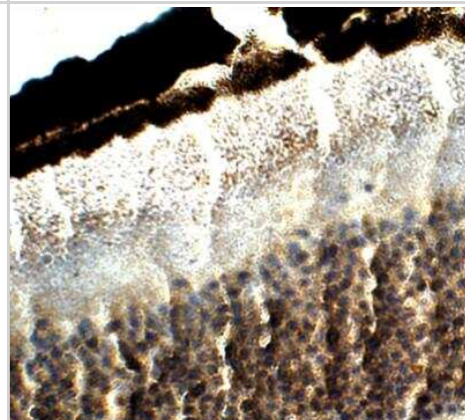


Images

Western Blot: EFEMP1 Antibody [NB300-691] - 62 kDa EFEMP1 from human RPE cells. Antibody diluted 1:500



Immunohistochemistry-Paraffin: Fibulin-3/EFEMP1 Antibody [NB300-691] - 1:50 dilution, DAB (brown) staining and Hematoxylin QS (blue) counterstain. 40X magnification, FFPE section





Novus Biologicals USA

10730 E. Briarwood Avenue
Centennial, CO 80112
USA
Phone: 303.730.1950
Toll Free: 1.888.506.6887
Fax: 303.730.1966
nb-customerservice@bio-techne.com

Bio-Techne Canada

21 Canmotor Ave
Toronto, ON M8Z 4E6
Canada
Phone: 905.827.6400
Toll Free: 855.668.8722
Fax: 905.827.6402
canada.inquires@bio-techne.com

Bio-Techne Ltd

19 Barton Lane
Abingdon Science Park
Abingdon, OX14 3NB, United Kingdom
Phone: (44) (0) 1235 529449
Free Phone: 0800 37 34 15
Fax: (44) (0) 1235 533420
info.EMEA@bio-techne.com

General Contact Information

www.novusbio.com
Technical Support: nb-technical@bio-techne.com
Orders: nb-customerservice@bio-techne.com
General: novus@novusbio.com

Products Related to NB300-691-0.05mg

HAF008	Goat anti-Rabbit IgG Secondary Antibody [HRP]
NB7160	Goat anti-Rabbit IgG (H+L) Secondary Antibody [HRP]
NBP2-24891	Rabbit IgG Isotype Control
NBP2-57871PEP	Fibulin-3/EFEMP1 Recombinant Protein Antigen

Limitations

This product is for research use only and is not approved for use in humans or in clinical diagnosis. Primary Antibodies are guaranteed for 1 year from date of receipt.

For more information on our 100% guarantee, please visit www.novusbio.com/guarantee

Earn gift cards/discounts by submitting a review: www.novusbio.com/reviews/submit/NB300-691

Earn gift cards/discounts by submitting a publication using this product:
www.novusbio.com/publications

