

# Product Datasheet

## Peripherin Antibody (7C5) NB300-220-0.1ml

Unit Size: 0.1 ml

Store at 4C short term. Aliquot and store at -20C long term. Avoid freeze-thaw cycles.

[www.novusbio.com](http://www.novusbio.com)



[technical@novusbio.com](mailto:technical@novusbio.com)

Protocols, Publications, Related Products, Reviews, Research Tools and Images at:  
[www.novusbio.com/NB300-220](http://www.novusbio.com/NB300-220)

Updated 7/19/2018 v.20.1

Earn rewards for product  
reviews and publications.

Submit a publication at [www.novusbio.com/publications](http://www.novusbio.com/publications)

Submit a review at [www.novusbio.com/reviews/destination/NB300-220](http://www.novusbio.com/reviews/destination/NB300-220)



**NB300-220-0.1ml**

## Peripherin Antibody (7C5)

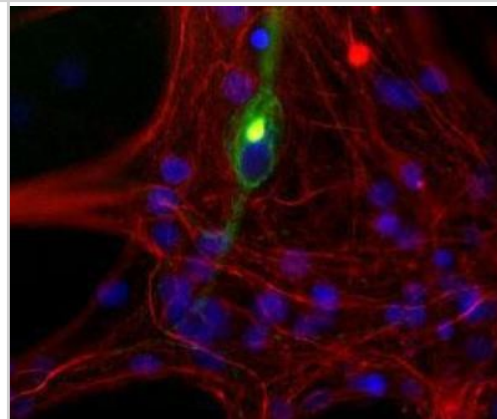
Product Information	
Unit Size	0.1 ml
Concentration	This product is unpurified. The exact concentration of antibody is not quantifiable.
Storage	Store at 4C short term. Aliquot and store at -20C long term. Avoid freeze-thaw cycles.
Clonality	Monoclonal
Clone	7C5
Preservative	5mM Sodium Azide
Isotype	IgG1 Kappa
Purity	Tissue culture supernatant
Buffer	Tissue culture supernatant
Target Molecular Weight	57 kDa

Product Description	
Host	Mouse
Gene ID	5630
Gene Symbol	PRPH
Species	Human, Mouse, Rat, Chicken, Mammal
Reactivity Notes	Chicken. Expected to cross-react with all mammals due to sequence homology.
Marker	Un-myelinated Neurons Marker
Immunogen	Recombinant rat Peripherin purified from E. coli. [UniProt# P21807]

Product Application Details	
Applications	Western Blot, Immunocytochemistry/Immunofluorescence
Recommended Dilutions	Western Blot 1:5000, Immunocytochemistry/Immunofluorescence 1:1000
Application Notes	This Peripherin (7C5) antibody can be used in Immunocytochemistry/Immunofluorescence and Western blot. A band at ~57 kDa can be seen in Western blot. This clone is relatively insensitive to aldehyde fixation, making it superior to clone 8G2 for this purpose. *The investigator should determine the optimal dilution for a specific application. The observed molecular weight of the protein may vary from the listed predicted molecular weight due to post translational modifications, post translation cleavages, relative charges, and other experimental factors.

## Images

Immunocytochemistry/Immunofluorescence: Peripherin Antibody (7C5) [NB300-220] - Mixed neuron/glia cultures from newborn rat brain stained with NB300-220 antibody to peripherin (green) and rabbit polyclonal antibody to NF-L NBP1-05218 (red channel). A class of large neurons, like the one in the middle of this image, contain peripherin, while the majority of neurons and their processes contain NF-L and not peripherin. Interestingly, the peripherin positive cells often contain a cytoplasmic inclusion next to the nucleus which stains for both peripherin and NF-L, and so appears golden in this kind of image. The blue channel reveals the localization of DNA.





### Novus Biologicals USA

10730 E. Briarwood Avenue  
Centennial, CO 80112  
USA

Phone: 303.730.1950  
Toll Free: 1.888.506.6887  
Fax: 303.730.1966  
novus@novusbio.com

### Novus Biologicals Canada

461 North Service Road West, Unit B37  
Oakville, ON L6M 2V5  
Canada

Phone: 905.827.6400  
Toll Free: 855.668.8722  
Fax: 905.827.6402  
canada@novusbio.com

### Novus Biologicals Europe

19 Barton Lane  
Abingdon Science Park  
Abingdon, OX14 3NB, United Kingdom

Phone: (44) (0) 1235 529449  
Free Phone: 0800 37 34 15  
Fax: (44) (0) 1235 533420  
info@bio-techne.com

### General Contact Information

www.novusbio.com  
Technical Support: technical@novusbio.com  
Orders: orders@novusbio.com  
General: novus@novusbio.com

### Products Related to NB300-220-0.1ml

---

HAF007	Goat anti-Mouse IgG Secondary Antibody [HRP (Horseradish Peroxidase)]
NB720-B	Rabbit anti-Mouse IgG (H+L) Secondary Antibody [Biotin]
NBP1-43319-0.5mg	Mouse, Human IgG1 Kappa Light Chain Isotype Control (P3.6.2.8.1)
H00005630-P01-10ug	Recombinant Human Peripherin Protein

---

### Limitations

This product is for research use only and is not approved for use in humans or in clinical diagnosis. Primary Antibodies are guaranteed for 1 year from date of receipt.

For more information on our 100% guarantee, please visit [www.novusbio.com/guarantee](http://www.novusbio.com/guarantee)

Earn gift cards/discounts by submitting a review: [www.novusbio.com/reviews/submit/NB300-220](http://www.novusbio.com/reviews/submit/NB300-220)

Earn gift cards/discounts by submitting a publication using this product:  
[www.novusbio.com/publications](http://www.novusbio.com/publications)

