

Product Datasheet

Inhibin alpha Antibody (4A2) - BSA Free NB110-89459-0.025ml

Unit Size: 0.025 ml

Store at 4C short term. Aliquot and store at -20C long term. Avoid freeze-thaw cycles.

www.novusbio.com



technical@novusbio.com

Publications: 1

Protocols, Publications, Related Products, Reviews, Research Tools and Images at:
www.novusbio.com/NB110-89459

Updated 6/13/2024 v.20.1

Earn rewards for product
reviews and publications.

Submit a publication at www.novusbio.com/publications

Submit a review at www.novusbio.com/reviews/destination/NB110-89459



NB110-89459-0.025ml

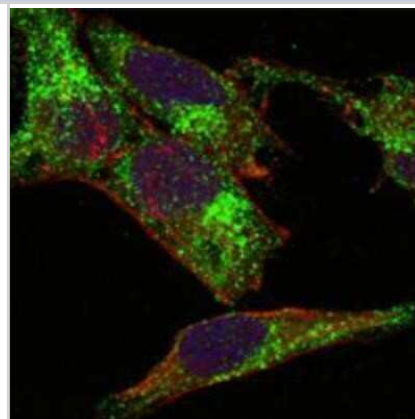
Inhibin alpha Antibody (4A2) - BSA Free

Product Information	
Unit Size	0.025 ml
Concentration	This product is unpurified. The exact concentration of antibody is not quantifiable.
Storage	Store at 4C short term. Aliquot and store at -20C long term. Avoid freeze-thaw cycles.
Clonality	Monoclonal
Clone	4A2
Preservative	0.03% Sodium Azide
Isotype	IgG1
Purity	Ascites
Buffer	Ascites
Target Molecular Weight	40 kDa
Product Description	
Host	Mouse
Gene ID	3623
Gene Symbol	INHA
Species	Human
Specificity/Sensitivity	INHA (4A2F7=4A2F2)
Immunogen	Purified recombinant fragment of human Inhibin alpha expressed in E. Coli.
Product Application Details	
Applications	Western Blot, ELISA, Immunocytochemistry/ Immunofluorescence, Immunohistochemistry, Immunohistochemistry-Paraffin
Recommended Dilutions	Western Blot 1:500 - 1:2000, ELISA 1:10000, Immunohistochemistry 1:200 - 1:1000, Immunocytochemistry/ Immunofluorescence 1:200 - 1:1000, Immunohistochemistry-Paraffin 1:200 - 1:1000
Application Notes	Western Blot reported in scientific literature (PMID: 23564191).

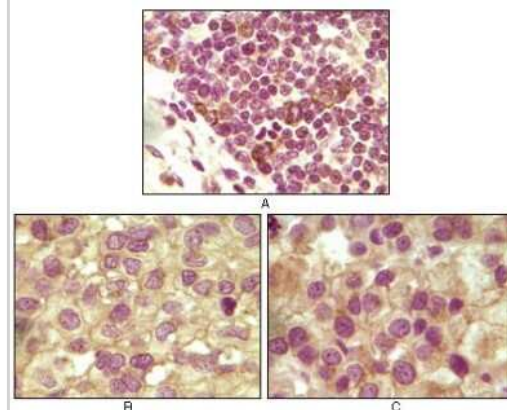


Images

Immunocytochemistry/Immunofluorescence: Inhibin alpha Antibody (4A2) [NB110-89459] - Analysis of Hela cells using INHA mouse mAb (green). Red: Actin filaments have been labeled with DY-554 phalloidin. Blue: DRAQ5 fluorescent DNA dye.



Immunohistochemistry-Paraffin: Inhibin alpha Antibody (4A2) [NB110-89459] - Analysis of human lymphoid (A), ovary tumor (B) and testicle tumor (C) tissues using INHA mouse mAb with DAB staining.



Publications

Chauhan SK, Singh VV, Rai R et al. Distinct autoantibody profiles in systemic lupus erythematosus patients are selectively associated with TLR7 and TLR9 upregulation. J Clin Immunol. 2013-07-01 [PMID: 23564191] (WB)

Details:

PBLs (WB) or B-cells (Flow intracellular) from SLE patients or controls: 1. TLR7 mAb clone IMG4G6 (IMG-6675A): WB (Figs 2a, 2c).



Novus Biologicals USA

10730 E. Briarwood Avenue
Centennial, CO 80112
USA
Phone: 303.730.1950
Toll Free: 1.888.506.6887
Fax: 303.730.1966
nb-customerservice@bio-techne.com

Bio-Techne Canada

21 Canmotor Ave
Toronto, ON M8Z 4E6
Canada
Phone: 905.827.6400
Toll Free: 855.668.8722
Fax: 905.827.6402
canada.inquires@bio-techne.com

Bio-Techne Ltd

19 Barton Lane
Abingdon Science Park
Abingdon, OX14 3NB, United Kingdom
Phone: (44) (0) 1235 529449
Free Phone: 0800 37 34 15
Fax: (44) (0) 1235 533420
info.EMEA@bio-techne.com

General Contact Information

www.novusbio.com
Technical Support: nb-technical@bio-
techne.com
Orders: nb-customerservice@bio-techne.com
General: novus@novusbio.com

Limitations

This product is for research use only and is not approved for use in humans or in clinical diagnosis. Primary Antibodies are guaranteed for 1 year from date of receipt.

For more information on our 100% guarantee, please visit www.novusbio.com/guarantee

Earn gift cards/discounts by submitting a review: www.novusbio.com/reviews/submit/NB110-89459

Earn gift cards/discounts by submitting a publication using this product:
www.novusbio.com/publications

