

# Product Datasheet

## CD45 Antibody (HLe-1(2D1)) [Alexa Fluor® 594] NB100-2658AF594

Unit Size: 0.1 ml

Store at 4C in the dark.

[www.novusbio.com](http://www.novusbio.com)



[technical@novusbio.com](mailto:technical@novusbio.com)

### Publications: 1

Protocols, Publications, Related Products, Reviews, Research Tools and Images at:  
[www.novusbio.com/NB100-2658AF594](http://www.novusbio.com/NB100-2658AF594)

Updated 4/15/2025 v.20.1

Earn rewards for product  
reviews and publications.

Submit a publication at [www.novusbio.com/publications](http://www.novusbio.com/publications)

Submit a review at [www.novusbio.com/reviews/destination/NB100-2658AF594](http://www.novusbio.com/reviews/destination/NB100-2658AF594)



**NB100-2658AF594**

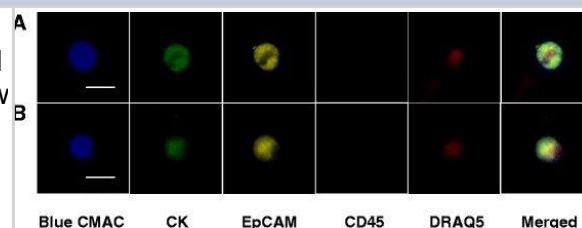
CD45 Antibody (HLe-1(2D1)) [Alexa Fluor® 594]

Product Information	
Unit Size	0.1 ml
Concentration	Please see the vial label for concentration. If unlisted please contact technical services.
Storage	Store at 4C in the dark.
Clonality	Monoclonal
Clone	HLe-1(2D1)
Preservative	0.05% Sodium Azide
Isotype	IgG1
Conjugate	Alexa Fluor 594
Purity	Protein A purified
Buffer	50mM Sodium Borate
Product Description	
Host	Mouse
Gene ID	5788
Gene Symbol	PTPRC
Species	Human
Specificity/Sensitivity	Recognizes all isoforms of CD45. It reacts strongly with cortical thymocytes, medullary thymus lymphocytes and peripheral lymphoid cells (including T and B cells), but reacts weakly with myeloid and erythroid bone marrow cells
Immunogen	This CD45 Antibody (HLe-1(2D1)) was prepared from Human peripheral blood mononuclear cells.
Notes	Alexa Fluor (R) products are provided under an intellectual property license from Life Technologies Corporation. The purchase of this product conveys to the buyer the non-transferable right to use the purchased product and components of the product only in research conducted by the buyer (whether the buyer is an academic or for-profit entity). The sale of this product is expressly conditioned on the buyer not using the product or its components, or any materials made using the product or its components, in any activity to generate revenue, which may include, but is not limited to use of the product or its components: (i) in manufacturing; (ii) to provide a service, information, or data in return for payment; (iii) for therapeutic, diagnostic or prophylactic purposes; or (iv) for resale, regardless of whether they are resold for use in research. For information on purchasing a license to this product for purposes other than as described above, contact Life Technologies Corporation, 5791 Van Allen Way, Carlsbad, CA 92008 USA or <a href="mailto:outlicensing@lifetech.com">outlicensing@lifetech.com</a> . This conjugate is made on demand. Actual recovery may vary from the stated volume of this product. The volume will be greater than or equal to the unit size stated on the datasheet.
Product Application Details	
Applications	Flow Cytometry, Immunocytochemistry/ Immunofluorescence, Immunohistochemistry, CyTOF-ready
Recommended Dilutions	Flow Cytometry, Immunohistochemistry, Immunocytochemistry/ Immunofluorescence, CyTOF-ready
Application Notes	Optimal dilution of this antibody should be experimentally determined.

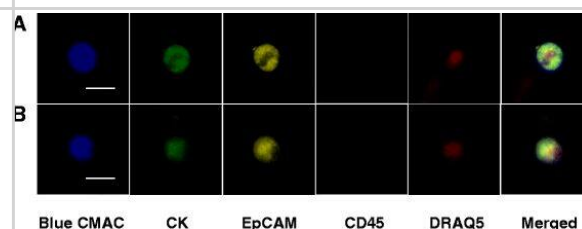


## Images

Representative images of CTCs isolated from breast cancer patient whole blood. Blood sample was kept at room temperature for 6 days and processed as described in the text. Rows a and b (from left to right) show images of captured CTCs stained for viability using Blue CMAC (blue), cytokeratin (CK) staining (green), EpCAM staining (yellow), Alexa Fluor 594 CD45 staining (olive), DNA staining (red) and merged figures, respectively. Bars indicate 20  $\mu$ m



Immunocytochemistry/ Immunofluorescence: CD45 Antibody (HLe-1 (2D1)) [Alexa Fluor® 594] [NB100-2658AF594] - Representative images of CTCs isolated from breast cancer patient whole blood. Blood sample was kept at room temperature for 6 days & processed as described in the text. Rows a & b (from left to right) show images of captured CTCs stained for viability using Blue CMAC (blue), cytokeratin (CK) staining (green), EpCAM staining (yellow), Alexa Fluor 594 CD45 staining (olive), DNA staining (red) & merged figures, respectively. Bars indicate 20  $\mu$ m Image collected & cropped by CiteAb from the following publication (<https://pubmed.ncbi.nlm.nih.gov/27150191>), licensed under a CC-BY license. Not internally tested by Novus Biologicals.



## Publications

Stefansson S, Adams D L et al A cell transportation solution that preserves live circulating tumor cells in patient blood samples BMC Cancer 2016-05-07 [PMID: 27150191] (IF/IHC, IF/IHC, Human)

Details:

Citation using the Alexa Fluor 594 version of this antibody.



### **Novus Biologicals USA**

10730 E. Briarwood Avenue  
Centennial, CO 80112  
USA  
Phone: 303.730.1950  
Toll Free: 1.888.506.6887  
Fax: 303.730.1966  
nb-customerservice@bio-techne.com

### **Bio-Techne Canada**

21 Canmotor Ave  
Toronto, ON M8Z 4E6  
Canada  
Phone: 905.827.6400  
Toll Free: 855.668.8722  
Fax: 905.827.6402  
canada.inquires@bio-techne.com

### **Bio-Techne Ltd**

19 Barton Lane  
Abingdon Science Park  
Abingdon, OX14 3NB, United Kingdom  
Phone: (44) (0) 1235 529449  
Free Phone: 0800 37 34 15  
Fax: (44) (0) 1235 533420  
info.EMEA@bio-techne.com

### **General Contact Information**

www.novusbio.com  
Technical Support: nb-technical@bio-  
techne.com  
Orders: nb-customerservice@bio-techne.com  
General: novus@novusbio.com

### **Limitations**

This product is for research use only and is not approved for use in humans or in clinical diagnosis.  
Primary Antibodies are guaranteed for 1 year from date of receipt.

For more information on our 100% guarantee, please visit [www.novusbio.com/guarantee](http://www.novusbio.com/guarantee)

Earn gift cards/discounts by submitting a review: [www.novusbio.com/reviews/submit/NB100-2658AF594](http://www.novusbio.com/reviews/submit/NB100-2658AF594)

Earn gift cards/discounts by submitting a publication using this product:  
[www.novusbio.com/publications](http://www.novusbio.com/publications)

