

Product Datasheet

Horse anti-Mouse IgG (H+L) Secondary Antibody [Cy3] CY-2300-NB

Unit Size: 1 mg

Store at 4C in the dark.

www.novusbio.com



technical@novusbio.com

Protocols, Publications, Related Products, Reviews, Research Tools and Images at:
www.novusbio.com/CY-2300-NB

Updated 6/25/2024 v.20.1

Earn rewards for product
reviews and publications.

Submit a publication at www.novusbio.com/publications

Submit a review at www.novusbio.com/reviews/destination/CY-2300-NB



CY-2300-NB

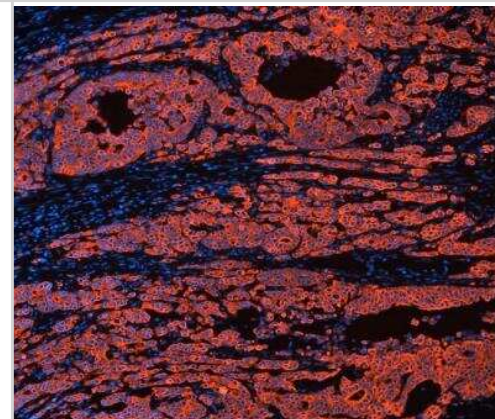
Horse anti-Mouse IgG (H+L) Secondary Antibody [Cy3]

Product Information	
Unit Size	1 mg
Concentration	1 mg/ml
Storage	Store at 4C in the dark.
Clonality	Polyclonal
Preservative	0.08% Sodium Azide
Isotype	IgG
Conjugate	Cy3
Purity	Affinity purified
Buffer	10 mM HEPES (pH 7.5), 0.15 M NaCl
Product Description	
Description	Features: Affinity-purified, ultrapure, high affinity antibody Thoroughly adsorbed against serum and immunoglobulins from potentially interfering species. Unless otherwise specified, antibodies recognizes both heavy and light chains (H +L) Optimally labeled with Cy3 to provide the brightest label for fluorescence microscopy Supplied in solution Excitation: 552 nm Emission: 565 nm Color: Red
Host	Horse
Species	Mouse
Immunogen	Mouse IgG
Notes	This product is manufactured by Vector Laboratories and distributed by Novus Biologicals.
Product Application Details	
Applications	Flow Cytometry, Immunoblotting, Immunocytochemistry/ Immunofluorescence, In-situ Hybridization
Recommended Dilutions	Flow Cytometry, Immunocytochemistry/ Immunofluorescence, Immunoblotting, In-situ Hybridization
Application Notes	Recommended concentration range for use 5 - 20 ug/mL.



Images

Immunofluorescence: Horse anti-Mouse IgG Secondary Antibody [Cy3] [CY-2300-NB] - Colon carcinoma (FFPE) was antigen retrieved with antigen unmasking solution. Primary antibody: mouse anti-pan cytokeratin (clone AE1/AE3). Secondary: Cy3 horse anti-mouse IgG. Mounted in VECTASHIELD HardSet Mounting Medium with DAPI.





Novus Biologicals USA

10730 E. Briarwood Avenue
Centennial, CO 80112
USA
Phone: 303.730.1950
Toll Free: 1.888.506.6887
Fax: 303.730.1966
nb-customerservice@bio-techne.com

Bio-Techne Canada

21 Canmotor Ave
Toronto, ON M8Z 4E6
Canada
Phone: 905.827.6400
Toll Free: 855.668.8722
Fax: 905.827.6402
canada.inquires@bio-techne.com

Bio-Techne Ltd

19 Barton Lane
Abingdon Science Park
Abingdon, OX14 3NB, United Kingdom
Phone: (44) (0) 1235 529449
Free Phone: 0800 37 34 15
Fax: (44) (0) 1235 533420
info.EMEA@bio-techne.com

General Contact Information

www.novusbio.com
Technical Support: nb-technical@bio-techne.com
Orders: nb-customerservice@bio-techne.com
General: novus@novusbio.com

Limitations

This product is for research use only and is not approved for use in humans or in clinical diagnosis. Secondary Antibodies are guaranteed for 1 year from date of receipt.

For more information on our 100% guarantee, please visit www.novusbio.com/guarantee

Earn gift cards/discounts by submitting a review: www.novusbio.com/reviews/submit/CY-2300-NB

Earn gift cards/discounts by submitting a publication using this product:
www.novusbio.com/publications

