

# Product Datasheet

## Goat anti-Rabbit IgG (H+L) Secondary Antibody [Cy3] CY-1300-NB

Unit Size: 1 mg

Store at 4C in the dark.

[www.novusbio.com](http://www.novusbio.com)



[technical@novusbio.com](mailto:technical@novusbio.com)

Protocols, Publications, Related Products, Reviews, Research Tools and Images at:  
[www.novusbio.com/CY-1300-NB](http://www.novusbio.com/CY-1300-NB)

Updated 6/25/2024 v.20.1

Earn rewards for product  
reviews and publications.

Submit a publication at [www.novusbio.com/publications](http://www.novusbio.com/publications)

Submit a review at [www.novusbio.com/reviews/destination/CY-1300-NB](http://www.novusbio.com/reviews/destination/CY-1300-NB)



**CY-1300-NB**

Goat anti-Rabbit IgG (H+L) Secondary Antibody [Cy3]

Product Information	
Unit Size	1 mg
Concentration	1 mg/ml
Storage	Store at 4C in the dark.
Clonality	Polyclonal
Preservative	0.08% Sodium Azide
Isotype	IgG
Conjugate	Cy3
Purity	Affinity purified
Buffer	10 mM HEPES, 0.15 M NaCl, pH 7.5

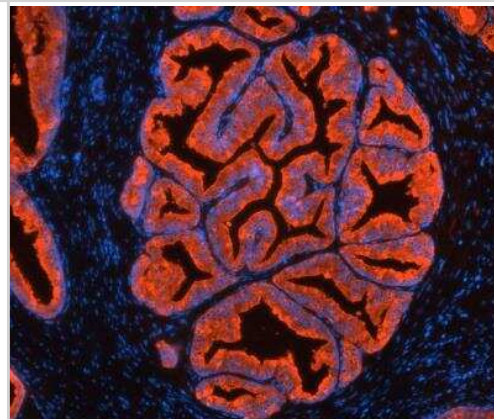
Product Description	
Description	<b>Features:</b>  Affinity-purified, ultrapure, high affinity antibody Thoroughly adsorbed against serum and immunoglobulins from potentially interfering species Unless otherwise specified, antibodies recognizes both heavy and light chains (H+L) Optimally labeled with Cy3 to provide the brightest label for fluorescence microscopy Supplied in solution Excitation: 552 nm Emission: 565 nm Color: Red
Host	Goat
Species	Rabbit
Immunogen	Rabbit IgG
Notes	This product is manufactured by Vector Laboratories and distributed by Novus Biologicals.

Product Application Details	
Applications	Flow Cytometry, Immunoblotting, Immunocytochemistry/ Immunofluorescence, In-situ Hybridization
Recommended Dilutions	Flow Cytometry, Immunocytochemistry/ Immunofluorescence, Immunoblotting, In-situ Hybridization
Application Notes	Recommended concentration range for use 5 - 20 ug/mL.



## Images

Immunofluorescence: Goat anti-Rabbit IgG Secondary Antibody [Cy3] [CY-1300-NB] - Prostate (FFPE) was antigen retrieved with antigen unmasking solution and stained with anti-PSA rabbit primary antibody and Cy3-goat anti-rabbit IgG. Mounted in VECTASHIELD HardSet Mounting Medium with DAPI.





### **Novus Biologicals USA**

10730 E. Briarwood Avenue  
Centennial, CO 80112  
USA  
Phone: 303.730.1950  
Toll Free: 1.888.506.6887  
Fax: 303.730.1966  
nb-customerservice@bio-techne.com

### **Bio-Techne Canada**

21 Canmotor Ave  
Toronto, ON M8Z 4E6  
Canada  
Phone: 905.827.6400  
Toll Free: 855.668.8722  
Fax: 905.827.6402  
canada.inquires@bio-techne.com

### **Bio-Techne Ltd**

19 Barton Lane  
Abingdon Science Park  
Abingdon, OX14 3NB, United Kingdom  
Phone: (44) (0) 1235 529449  
Free Phone: 0800 37 34 15  
Fax: (44) (0) 1235 533420  
info.EMEA@bio-techne.com

### **General Contact Information**

www.novusbio.com  
Technical Support: nb-technical@bio-  
techne.com  
Orders: nb-customerservice@bio-techne.com  
General: novus@novusbio.com

### **Limitations**

This product is for research use only and is not approved for use in humans or in clinical diagnosis. Secondary Antibodies are guaranteed for 1 year from date of receipt.

For more information on our 100% guarantee, please visit [www.novusbio.com/guarantee](http://www.novusbio.com/guarantee)

Earn gift cards/discounts by submitting a review: [www.novusbio.com/reviews/submit/CY-1300-NB](http://www.novusbio.com/reviews/submit/CY-1300-NB)

Earn gift cards/discounts by submitting a publication using this product:  
[www.novusbio.com/publications](http://www.novusbio.com/publications)

