

Product Datasheet

Sambucus Nigra Lectin [Cy5]

CL-1305-NB

Unit Size: 1 mg

Store at 4C in the dark.

www.novusbio.com



technical@novusbio.com

Publications: 1

Protocols, Publications, Related Products, Reviews, Research Tools and Images at:
www.novusbio.com/CL-1305-NB

Updated 6/25/2024 v.20.1

Earn rewards for product
reviews and publications.

Submit a publication at www.novusbio.com/publications

Submit a review at www.novusbio.com/reviews/destination/CL-1305-NB



CL-1305-NB

Sambucus Nigra Lectin [Cy5]

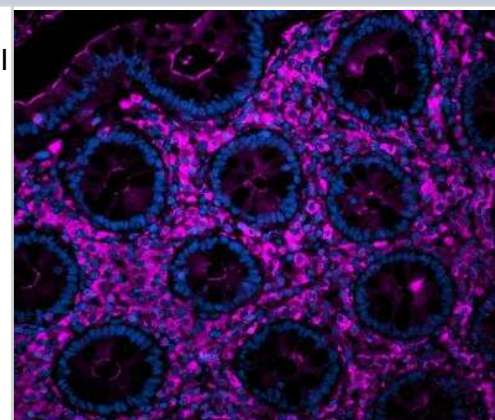
| Product Information | |
|---------------------|--|
| Unit Size | 1 mg |
| Concentration | Please see the protocols for proper use of this product. If no protocol is available, contact technical services for assistance. |
| Storage | Store at 4C in the dark. |
| Preservative | 0.08% Sodium Azide |
| Conjugate | Cy5 |
| Buffer | 10 mM HEPES, 0.15 M NaCl, pH 7.5, 0.1 mM Ca ²⁺ , 0.01 mM Mn ²⁺ , protein stabilizer. |

| Product Description | |
|---------------------|--|
| Description | Features: Cy5 labeled Sambucus nigra lectin has an appropriate number of fluorochromes bound to provide the optimum staining characteristics for this lectin. This conjugate is supplied essentially free of unconjugated fluorochromes. Excitation: 650 nm Emission: 670 nm Color: Far Red |
| Notes | This product is manufactured by Vector Laboratories and distributed by Novus Biologicals. |

| Product Application Details | |
|-----------------------------|---|
| Applications | Immunocytochemistry/ Immunofluorescence |
| Recommended Dilutions | Immunocytochemistry/ Immunofluorescence |
| Application Notes | A precipitate may form during storage. This does not have a significant adverse effect on the product. If a precipitate forms upon long-term storage at 4C, warm to 37C and centrifuge before use. The recommended concentration range for use is 5-20 ug/mL. |

Images

Immunofluorescence: Sambucus Nigra Lectin [Cy5] [CL-1305-NB] - Colon FFPE stained with Cy5 Sambucus Nigra Lectin (fuchsia) and DAPI (blue).

**Publications**

Rao TC, Beggs RR, Ankenbauer KE et al. ST6Gal-I-mediated sialylation of the epidermal growth factor receptor modulates cell mechanics and enhances invasion The Journal of biological chemistry 2022-02-11 [PMID: 35157848]



Novus Biologicals USA

10730 E. Briarwood Avenue
Centennial, CO 80112
USA
Phone: 303.730.1950
Toll Free: 1.888.506.6887
Fax: 303.730.1966
nb-customerservice@bio-techne.com

Bio-Techne Canada

21 Canmotor Ave
Toronto, ON M8Z 4E6
Canada
Phone: 905.827.6400
Toll Free: 855.668.8722
Fax: 905.827.6402
canada.inquires@bio-techne.com

Bio-Techne Ltd

19 Barton Lane
Abingdon Science Park
Abingdon, OX14 3NB, United Kingdom
Phone: (44) (0) 1235 529449
Free Phone: 0800 37 34 15
Fax: (44) (0) 1235 533420
info.EMEA@bio-techne.com

General Contact Information

www.novusbio.com
Technical Support: nb-technical@bio-techne.com
Orders: nb-customerservice@bio-techne.com
General: novus@novusbio.com

Limitations

This product is for research use only and is not approved for use in humans or in clinical diagnosis. Support products are guaranteed for 6 months from date of receipt.

For more information on our 100% guarantee, please visit www.novusbio.com/guarantee

Earn gift cards/discounts by submitting a review: www.novusbio.com/reviews/submit/CL-1305-NB

Earn gift cards/discounts by submitting a publication using this product:
www.novusbio.com/publications

