

Product Datasheet

Human Erythrocyte Lysing Flow Cytometry Kit WL1000-NOV

Unit Size: 1 Kit

Store at room temperature.

www.novusbio.com



technical@novusbio.com

Protocols, Publications, Related Products, Reviews, Research Tools and Images at:
www.novusbio.com/WL1000-NOV

Updated 9/11/2023 v.20.1

Earn rewards for product
reviews and publications.

Submit a publication at www.novusbio.com/publications

Submit a review at www.novusbio.com/reviews/destination/WL1000-NOV



WL1000-NOV**Human Erythrocyte Lysing Flow Cytometry Kit**

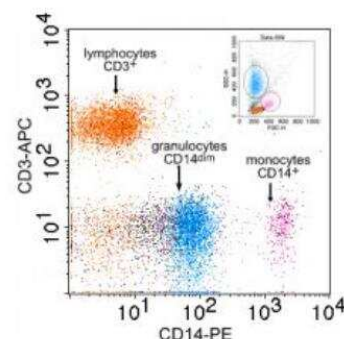
Product Information	
Unit Size	1 Kit
Concentration	Concentration is not relevant for this product. Please see the protocols for proper use of this product.
Storage	Store at room temperature.
Product Description	
Description	<p>Human Erythrocyte Lysing Kit is designed to gently lyse erythrocytes from leukocyte cell preparations and stabilize the leukocytes with fixative for later analysis by flow cytometry. Cells exposed to the lysing reagent retain their natural light scattering and fluorescent staining characteristics by flow cytometry. This erythrocyte lysing method also has an advantage over other lysing methods in that the viability of the leukocytes is maintained. The fixative and lysing reagents are provided as separate reagents, thus allowing cells to be used in tissue culture following red blood cell lysis. Features</p> <ul style="list-style-type: none"> • Gently lyses erythrocytes • Stabilizes leukocytes for analysis by flow cytometry • Maintains natural light scattering and fluorescent staining properties of leukocytes • Maintains leukocyte viability for subsequent cell culture manipulation
Species	Human
Kit Components	H-Lyse Buffer (10X), Wash Buffer (10X), Fixative (10X)
Product Application Details	
Applications	Flow Cytometry
Recommended Dilutions	Flow Cytometry



Images

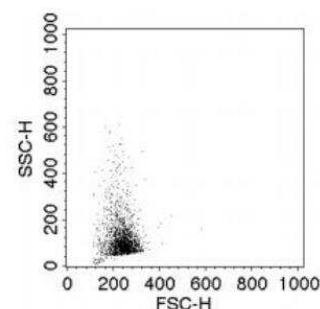
Flow Cytometry: Human Erythrocyte Lysing Flow Cytometry Kit [WL1000-NOV] - Scatter dot histogram of whole blood stained with anti anti-CD14-PE and anti-CD3-APC followed by treatment with Erythrocyte Lysing Reagent and Fixative. Stained cells were stored for 24 hours at 2 - 8C prior to flow cytometric analysis.

Staining of Lysed and Fixed Cells



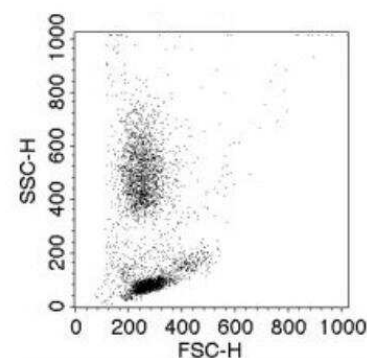
Flow Cytometry: Human Erythrocyte Lysing Flow Cytometry Kit [WL1000-NOV] - Light scatter dot histogram (FS - forward light scatter vs. SS-side light scatter) of whole unlysed blood.

Cells Before Lysing



Flow Cytometry: Human Erythrocyte Lysing Flow Cytometry Kit [WL1000-NOV] - Light scatter dot histogram (FS - forward light scatter vs. SS-side light scatter) of whole blood treated with Erythrocyte Lysing Reagent.

Cells After Lysing





Novus Biologicals USA

10730 E. Briarwood Avenue
Centennial, CO 80112
USA
Phone: 303.730.1950
Toll Free: 1.888.506.6887
Fax: 303.730.1966
nb-customerservice@bio-techne.com

Bio-Techne Canada

21 Canmotor Ave
Toronto, ON M8Z 4E6
Canada
Phone: 905.827.6400
Toll Free: 855.668.8722
Fax: 905.827.6402
canada.inquires@bio-techne.com

Bio-Techne Ltd

19 Barton Lane
Abingdon Science Park
Abingdon, OX14 3NB, United Kingdom
Phone: (44) (0) 1235 529449
Free Phone: 0800 37 34 15
Fax: (44) (0) 1235 533420
info.EMEA@bio-techne.com

General Contact Information

www.novusbio.com
Technical Support: nb-technical@bio-
techne.com
Orders: nb-customerservice@bio-techne.com
General: novus@novusbio.com

Limitations

This product is for research use only and is not approved for use in humans or in clinical diagnosis. Kits are guaranteed for 6 months from date of receipt.

For more information on our 100% guarantee, please visit www.novusbio.com/guarantee

Earn gift cards/discounts by submitting a review: www.novusbio.com/reviews/submit/WL1000-NOV

Earn gift cards/discounts by submitting a publication using this product:
www.novusbio.com/publications

