

# Product Datasheet

## WC1(+) gamma delta T cell Antibody (CACT21A) NBP2-61083

Unit Size: 0.1 mg

Store at 4C short term. Aliquot and store at -20C long term. Avoid freeze-thaw cycles.

[www.novusbio.com](http://www.novusbio.com)



[technical@novusbio.com](mailto:technical@novusbio.com)

Protocols, Publications, Related Products, Reviews, Research Tools and Images at:  
[www.novusbio.com/NBP2-61083](http://www.novusbio.com/NBP2-61083)

Updated 4/21/2024 v.20.1

Earn rewards for product  
reviews and publications.

Submit a publication at [www.novusbio.com/publications](http://www.novusbio.com/publications)

Submit a review at [www.novusbio.com/reviews/destination/NBP2-61083](http://www.novusbio.com/reviews/destination/NBP2-61083)



**NBP2-61083**

WC1(+) gamma delta T cell Antibody (CACT21A)

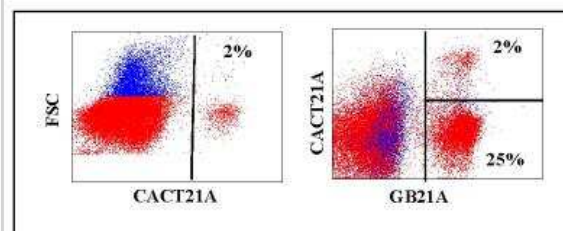
Product Information	
Unit Size	0.1 mg
Concentration	This product is unpurified. The exact concentration of antibody is not quantifiable.
Storage	Store at 4C short term. Aliquot and store at -20C long term. Avoid freeze-thaw cycles.
Clonality	Monoclonal
Clone	CACT21A
Preservative	0.09% Sodium Azide
Isotype	IgG1
Purity	Unpurified
Buffer	Ascites

Product Description	
Description	This monoclonal antibody is made in ascites form using mice. The ascites is collected and centrifuged to remove cells and large particles. The ascitic fluid is purified further by filtration through sequential filters with the last filter at 2 um. The concentration of the monoclonal antibody present in the ascites is determined with commercial radial immunodiffusion kits (1mg/ml).
Host	Mouse
Species	Bovine
Immunogen	Bovine ConA stimulated mononuclear leukocytes
Notes	This monoclonal antibody is made in ascites form using mice. The ascites is collected and centrifuged to remove cells and large particles. The ascitic fluid is purified further by filtration through sequential filters with the last filter at 2 um. The concentration of the monoclonal antibody present in the ascites is determined with commercial radial immunodiffusion kits (1mg/ml).

Product Application Details	
Applications	Flow Cytometry
Recommended Dilutions	Flow Cytometry 1:10 - 1:1000

**Images**

Flow Cytometry: WC1(+) gamma delta T cell Antibody (CACT21A) [NBP2-61083] - Obtained with bovine leukocytes. GB21A recognizes TCR1-delta chain. CACT21A recognizes a subset of WC1+ gamma-delta T cells.





### **Novus Biologicals USA**

10730 E. Briarwood Avenue  
Centennial, CO 80112  
USA  
Phone: 303.730.1950  
Toll Free: 1.888.506.6887  
Fax: 303.730.1966  
nb-customerservice@bio-techne.com

### **Bio-Techne Canada**

21 Canmotor Ave  
Toronto, ON M8Z 4E6  
Canada  
Phone: 905.827.6400  
Toll Free: 855.668.8722  
Fax: 905.827.6402  
canada.inquires@bio-techne.com

### **Bio-Techne Ltd**

19 Barton Lane  
Abingdon Science Park  
Abingdon, OX14 3NB, United Kingdom  
Phone: (44) (0) 1235 529449  
Free Phone: 0800 37 34 15  
Fax: (44) (0) 1235 533420  
info.EMEA@bio-techne.com

### **General Contact Information**

www.novusbio.com  
Technical Support: nb-technical@bio-techne.com  
Orders: nb-customerservice@bio-techne.com  
General: novus@novusbio.com

### **Products Related to NBP2-61083**

HAF007	Goat anti-Mouse IgG Secondary Antibody [HRP]
NB720-B	Rabbit anti-Mouse IgG (H+L) Secondary Antibody [Biotin]
NBP1-97005-0.5mg	Mouse IgG1 Isotype Control (MG1)

### **Limitations**

This product is for research use only and is not approved for use in humans or in clinical diagnosis. Primary Antibodies are guaranteed for 1 year from date of receipt.

For more information on our 100% guarantee, please visit [www.novusbio.com/guarantee](http://www.novusbio.com/guarantee)

Earn gift cards/discounts by submitting a review: [www.novusbio.com/reviews/submit/NBP2-61083](http://www.novusbio.com/reviews/submit/NBP2-61083)

Earn gift cards/discounts by submitting a publication using this product:  
[www.novusbio.com/publications](http://www.novusbio.com/publications)

