

Product Datasheet

Lambda Light Chain Antibody (BIG501E) NBP2-60997

Unit Size: 0.1 mg

Store at 4C short term. Aliquot and store at -20C long term. Avoid freeze-thaw cycles.

www.novusbio.com



technical@novusbio.com

Protocols, Publications, Related Products, Reviews, Research Tools and Images at:
www.novusbio.com/NBP2-60997

Updated 7/17/2023 v.20.1

Earn rewards for product
reviews and publications.

Submit a publication at www.novusbio.com/publications

Submit a review at www.novusbio.com/reviews/destination/NBP2-60997



NBP2-60997**Lambda Light Chain Antibody (BIG501E)**

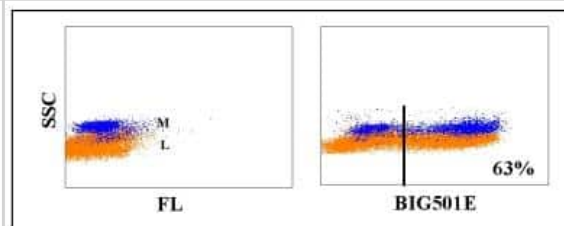
Product Information	
Unit Size	0.1 mg
Concentration	This product is unpurified. The exact concentration of antibody is not quantifiable.
Storage	Store at 4C short term. Aliquot and store at -20C long term. Avoid freeze-thaw cycles.
Clonality	Monoclonal
Clone	BIG501E
Preservative	0.09% Sodium Azide
Isotype	IgG1
Purity	Unpurified
Buffer	Ascites

Product Description	
Host	Mouse
Gene ID	3537
Gene Symbol	IGLC1
Species	Bovine, Goat, Water Buffalo, Sheep
Immunogen	Bovine immunoglobulins
Notes	This monoclonal antibody is made in ascites form using mice. The ascites is collected and centrifuged to remove cells and large particles. The ascitic fluid is purified further by filtration through sequential filters with the last filter at 2 um. The concentration of the monoclonal antibody present in the ascites is determined with commercial radial immunodiffusion kits (1mg/ml).

Product Application Details	
Applications	Flow Cytometry
Recommended Dilutions	Flow Cytometry 1:10 - 1:1000

Images

Flow Cytometry: Lambda Light Chain Antibody (BIG501E) [NBP2-60997]
 - Obtained with bovine leukocytes





Novus Biologicals USA

10730 E. Briarwood Avenue
Centennial, CO 80112
USA
Phone: 303.730.1950
Toll Free: 1.888.506.6887
Fax: 303.730.1966
nb-customerservice@bio-techne.com

Bio-Techne Canada

21 Canmotor Ave
Toronto, ON M8Z 4E6
Canada
Phone: 905.827.6400
Toll Free: 855.668.8722
Fax: 905.827.6402
canada.inquires@bio-techne.com

Bio-Techne Ltd

19 Barton Lane
Abingdon Science Park
Abingdon, OX14 3NB, United Kingdom
Phone: (44) (0) 1235 529449
Free Phone: 0800 37 34 15
Fax: (44) (0) 1235 533420
info.EMEA@bio-techne.com

General Contact Information

www.novusbio.com
Technical Support: nb-technical@bio-techne.com
Orders: nb-customerservice@bio-techne.com
General: novus@novusbio.com

Limitations

This product is for research use only and is not approved for use in humans or in clinical diagnosis. Primary Antibodies are guaranteed for 1 year from date of receipt.

For more information on our 100% guarantee, please visit www.novusbio.com/guarantee

Earn gift cards/discounts by submitting a review: www.novusbio.com/reviews/submit/NBP2-60997

Earn gift cards/discounts by submitting a publication using this product:
www.novusbio.com/publications

