

Product Datasheet

SMAP1 Antibody NBP2-60728

Unit Size: 100 ul

Store at 4°C.

www.novusbio.com



technical@novusbio.com

Protocols, Publications, Related Products, Reviews, Research Tools and Images at:
www.novusbio.com/NBP2-60728

Updated 10/10/2022 v.20.1

Earn rewards for product
reviews and publications.

Submit a publication at www.novusbio.com/publications

Submit a review at www.novusbio.com/reviews/destination/NBP2-60728



NBP2-60728

SMAP1 Antibody

Product Information	
Unit Size	100 ul
Concentration	Please see the vial label for concentration. If unlisted please contact technical services.
Storage	Store at 4°C.
Clonality	Polyclonal
Preservative	0.09% Sodium Azide
Isotype	IgG
Purity	Affinity purified
Buffer	Tris-buffered Saline containing 0.1% BSA

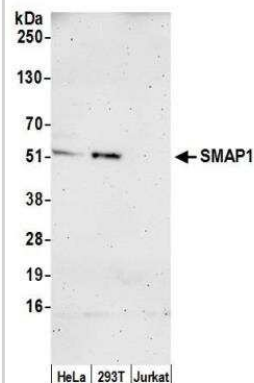
Product Description	
Host	Rabbit
Gene ID	60682
Gene Symbol	SMAP1
Species	Human
Immunogen	between 417 and 467

Product Application Details	
Applications	Western Blot, Immunoprecipitation
Recommended Dilutions	Western Blot 1:1000, Immunoprecipitation 8-15 ul/mg lysate

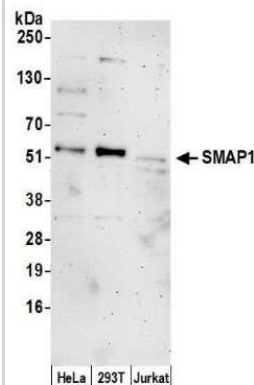


Images

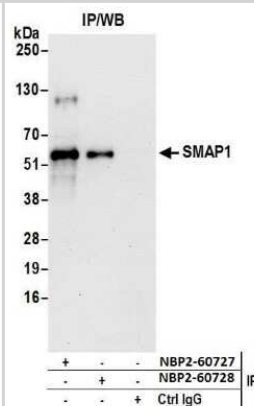
Western Blot: SMAP1 Antibody [NBP2-60728] - Detection of human SMAP1 by western blot. Samples: Nuclear extract (50 ug) from HeLa, HEK293T, and Jurkat cells prepared using NETN lysis buffer. Antibody: Affinity purified rabbit anti-SMAP1 antibody NBP2-60728 used for WB at 1:1000. Detection: Chemiluminescence with an exposure time of 3 minutes.



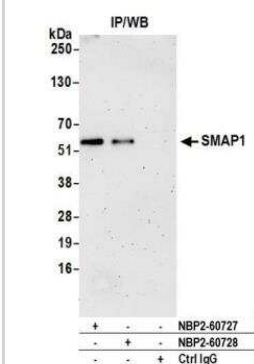
Western Blot: SMAP1 Antibody [NBP2-60728] - Detection of human SMAP1 by western blot. Samples: Nuclear extract (50 ug) from HeLa, 293T, and Jurkat cells prepared using NETN lysis buffer. Antibody: Affinity purified rabbit anti-SMAP1 antibody NBP2-60728 used for WB at 1:1000. Detection: Chemiluminescence with an exposure time of 3 minutes.



Western Blot: SMAP1 Antibody [NBP2-60728] - Detection of human SMAP1 by western blot of immunoprecipitates. Samples: Whole cell lysate (0.5 or 1.0 mg per IP reaction; 20% of IP loaded) from HeLa cells prepared using NETN lysis buffer. Antibodies: Affinity purified rabbit anti-SMAP1 antibody NBP2-60728 used for IP at 8 ul per reaction. SMAP1 was also immunoprecipitated by rabbit anti-SMAP1 antibody NBP2-60727. For blotting immunoprecipitated SMAP1, NBP2-60728 was used at 1:400. Detection: Chemiluminescence with an exposure time of 3 minutes.



Immunoprecipitation: SMAP1 Antibody [NBP2-60728] - Detection of human SMAP1 by western blot of immunoprecipitates. Samples: Whole cell lysate (0.5 or 1.0 mg per IP reaction; 20% of IP loaded) from HeLa cells prepared using NETN lysis buffer. Antibodies: Affinity purified rabbit anti-SMAP1 antibody NBP2-60728 used for IP at 8 ul per reaction. SMAP1 was also immunoprecipitated by rabbit anti-SMAP1 antibody NBP2-60727. For blotting immunoprecipitated SMAP1, NBP2-60728 was used at 1:400. Detection: Chemiluminescence with an exposure time of 3 minutes.





Novus Biologicals USA

10730 E. Briarwood Avenue
Centennial, CO 80112
USA
Phone: 303.730.1950
Toll Free: 1.888.506.6887
Fax: 303.730.1966
nb-customerservice@bio-techne.com

Bio-Techne Canada

21 Canmotor Ave
Toronto, ON M8Z 4E6
Canada
Phone: 905.827.6400
Toll Free: 855.668.8722
Fax: 905.827.6402
canada.inquires@bio-techne.com

Bio-Techne Ltd

19 Barton Lane
Abingdon Science Park
Abingdon, OX14 3NB, United Kingdom
Phone: (44) (0) 1235 529449
Free Phone: 0800 37 34 15
Fax: (44) (0) 1235 533420
info.EMEA@bio-techne.com

General Contact Information

www.novusbio.com
Technical Support: nb-technical@bio-
techne.com
Orders: nb-customerservice@bio-techne.com
General: novus@novusbio.com

Limitations

This product is for research use only and is not approved for use in humans or in clinical diagnosis. Primary Antibodies are guaranteed for 1 year from date of receipt.

For more information on our 100% guarantee, please visit www.novusbio.com/guarantee

Earn gift cards/discounts by submitting a review: www.novusbio.com/reviews/submit/NBP2-60728

Earn gift cards/discounts by submitting a publication using this product:
www.novusbio.com/publications

